

2024  
-  
2025

# FUND YOUR FUTURE

Strategies for Educational and Career Advancement



# SIGN UP FOR TCF TEXTS

Be sure to keep up with the latest information from The Ciri Foundation via text messaging.



- Scholarship Program Updates
- Deadline Reminders
- Finals Support Gift for Recipients
- Event Invitations
- Alumni Opportunities



# CONTENTS



**Success Strategies**



**TCF Eligibility**

## EDUCATION RESOURCES

### 02 **Unlocking Potential**

*The Value of Higher Education  
Planning Your Career Path  
What To Do & When To Do It  
Understanding Financial Aid*

### 11 **Leveraging ANCSA for Educational Advancement**

*Alaska Native Regional and Education Foundation Scholarships  
Tribal Councils of Cook Inlet Region Scholarships  
U.S. Tribal Scholarships  
Alaska Native and Native American Student Scholarships*

### 28 **More Scholarship Opportunities**

*Minority Scholarships  
General Scholarships  
High School Student Programs & Scholarships  
Graduate Scholarships & Fellowships*

**New!**

## 40 **CAREER TECHNICAL EDUCATION**

*TCF CTE Scholarships  
Alaska Works Partnership  
Alaska Vocational Technical Center  
Northern Industrial Training*

### 48 **Building Experience**

*Internship Opportunities  
Education & Employment Resources*

### 54 **Diverse Pathways**

*WICHE Exchange Programs  
WWAMI  
Tribal Colleges & Universities*

## **Acknowledgment of Gratitude**

On behalf of our shareholders and recipients, The CIRI Foundation thanks our Board of Directors for their exceptional leadership and commitment. Our achievements are greatly attributed to their guidance and support.

- Jeff Gonnason, OD, Chair, for steering our vision.
- Ryan Newton, Vice Chair, for invaluable insights.
- Louis "Lou" Nagy, Jr., Secretary/Treasurer, for financial stewardship.
- Deanna Sackett, Assistant Secretary/Treasurer, for diligent oversight.
- Jessica Greiner, Donna James, Daniel Mitchell, Cynthia Muller, Cheryl Wilga, PhD, Susan Wells, and David Wight, for their dedicated service and expertise that propel our mission forward.

Their collective efforts ensure we continue to empower and educate our community, making a lasting difference. We are profoundly grateful for their dedication to "Funding Our Future."

A special acknowledgment to CIRI's Board of Directors, whose foundational efforts and ongoing support have been instrumental in shaping our mission and success. Their contributions have laid the cornerstone for our continued impact and legacy. Thank you for your unwavering support and being a major part of funding our future.

# UNLOCKING POTENTIAL: THE VALUE OF HIGHER LEARNING

Welcome to the threshold of your future. In the ever-changing landscape of the 21st century, higher education and vocational training are not merely options; they are essential keys to unlocking a world of possibilities. This guide is designed to illuminate the path ahead, helping you navigate the journey from here to your highest aspirations.



**YOUR COLLEGE DEGREE: A PATH TO SUCCESS**

EARN MORE:  
GRADUATES EARN 56% MORE ON AVERAGE

LOWER UNEMPLOYMENT:  
JUST 2.2% OF BACHELOR'S DEGREE HOLDERS

LIFETIME EARNINGS:  
EARN \$1 MILLION MORE OVER A LIFETIME THAN HIGH-SCHOOL GRADUATES

**ELEVATE YOUR EDUCATION**

## Why Higher Learning?

**Economic Empowerment Expansive Opportunities Personal & Professional Growth**

Investing in your education is more than just hitting the books; it's about setting up your future for success. The U.S. Bureau of Labor Statistics lays it out clearly: the higher your education level, the higher your potential earnings and the lower your chances of being unemployed.

Think about this: In 2022, those with a doctoral degree were earning around \$2,083 weekly, while those without a high school diploma were at \$682. The difference is stark, and it doesn't stop there. With each degree, from an associate's to a master's, there's a noticeable hike in your paycheck. And if job security is a concern, education is your armor. The more you learn, the less likely you are to face unemployment.

But let's get real - we're not just talking numbers and job security here. Your education equips you with the skills to navigate and adapt in a fast-paced world. It's about being ready for the jobs of tomorrow that might not even exist today. The knowledge and credentials you gain are signals to employers that you're ready to tackle challenges head-on.

So, whether you're dreaming of being an engineer, a tech guru, or an entrepreneur, remember that your education is the launchpad for those dreams. It's the smartest investment you can make for a thriving career that's not just about making more money but also about making a mark in the world.

## PLANNING FOR SUCCESS

Embarking on an educational journey is a monumental choice with a multitude of considerations. The process of planning for a successful educational experience is a deliberate one, requiring thoughtful inquiry and strategic decision-making. Consider:

- What are the tangible and intangible benefits of higher education, and how do they align with my personal and professional goals?
- How do I select a school that aligns with my learning style, career aspirations, and lifestyle preferences?
- What area of study will fuel my passion and position me for success in the job market?
- What types of financial aid can I access, and what are the steps to secure these resources?
- What other resources and tools can assist me in preparing for post-secondary education or transitioning into the workforce?

These questions are a starting point, a launchpad for deeper exploration. The answers will form the foundation of your educational plan, a blueprint for academic and career success.

**In 2022, doctoral degree holders earn \$2,083 weekly, compared to \$682 for those without a high school diploma.**



## Choosing Your Educational Journey

### DISCOVERING YOUR PASSION

Your journey to a fulfilling career begins with a deep dive into your interests and what excites you. This section is all about introspection—taking a closer look at what makes you tick. Are you drawn to helping others, or do complex problems energize you? Maybe you're fascinated by how things work, or perhaps creative expression is where your heart lies.

Start by reflecting on moments you've felt most engaged—whether during a class project, a personal hobby, or a part-time job. These are clues to your passions and potential career paths. This chapter will guide you through aligning these personal interests with viable fields of study or vocational paths, ensuring your career is not just a job, but a reflection of what you love to do.

### LOOKING TO THE FUTURE

Once you've pinpointed your passions, it's time to match them with tomorrow's opportunities. This means staying informed about where industries are headed. Is there a demand for green energy experts? What does the boom in tech mean for cybersecurity professionals? This section will provide you with the tools to research industry trends, identify growth areas, and understand how the job market is evolving.

You'll learn how to forecast which careers are on the rise and which skills will be valuable in the coming years. By looking ahead, you can choose an educational path that leads to a career at the forefront of innovation and stability.

### OCCUPATIONAL OUTLOOK

*The Occupational Outlook Handbook* from the United States Bureau of Labor Statistics is your comprehensive guide to navigating the job landscape. This essential resource offers a deep dive into various professions, detailing what to expect from each role, the education and training you'll need, salary expectations, and the job market's future outlook. You'll find a wealth of information on working conditions, along with insightful job search strategies and a gateway to employment data across states.

For a richer understanding of your career prospects and to empower your job search, visit the BLS at [www.bls.gov/ooh](http://www.bls.gov/ooh). Here, you'll unlock a suite of resources designed to guide your career decisions with confidence and clarity.

**CAREER TECHNICAL EDUCATION**

**FAST TRACK**

**Rapid Skill Development:** Gain job-ready skills in less than 2 years.

**High Demand Fields:** Over 60% of skilled trades report a shortage of workers.

**Competitive Earnings:** The average income of construction workers in Alaska is \$85,000.

**Real-World Experience:** 92% of career technical education trainees find employment in their field within 6 months.

**Career Progression:** Career technical education graduates see an average 20% salary increase after certification.

OPEN EVERY MONTH

DEADLINE

OPPORTUNITY AHEAD

# PLANNING YOUR CAREER PATH

*Deciding on the right school marks a significant milestone in your educational path. Simplify this crucial choice by engaging with mentors, educators, and loved ones who provide valuable perspectives. Use the National Center for Educational Statistics ([nces.ed.gov/collegenavigator](https://nces.ed.gov/collegenavigator)) for detailed comparisons and insights into schools, encompassing statistics and preparatory advice.*

## ***Finding Your Ideal School***

***Undergraduate Graduate Career Certification Vocational Training CTE***

**Public Institutions:** Affordable, diverse programs funded by the government.

**Private Institutions:** Unique programs and smaller classes; supported by private funds.

**Community Colleges:** Practical for vocational training and transfer programs.

**State Colleges and Universities:** Wide range of advanced programs, state-funded.

**Tribal Colleges and Universities:** Focus on culture and tradition, offering accredited degrees.

**Private Junior Colleges:** Two-year transfer programs, tuition-funded.

**Vocational Training Institutions:** Offer certificates or degrees in various fields.

**Private, For-profit Colleges/Universities:** Flexible for working students, ensure credit transferability.

**Online Programs:** Flexible, self-paced learning options for all.

### **SELECTING THE RIGHT SCHOOL**

Consider the following to make an informed decision:

- Costs: Tuition, fees, supplies.
- Programs & Services: Desired courses, academic support, extracurriculars.
- Environment: School size, location, campus safety.
- Quality & Outcomes: Course quality, graduation rates, curriculum relevance.
- Support & Resources: Financial aid, housing, diversity, placement services.
- Accreditation: Recognized by the U.S. Department of Education.

### **CHOOSING YOUR PROGRAM OF STUDY**

When selecting a program, consider your career goals, interest levels, available funding, and time commitment:

- Career Diploma/Certificate: Typically 2-9 months.
- Vocational Training Program: Around 2-18 months.
- Associate Degree: A 2-year program.
- Bachelor's Degree: A 4-year program.
- Master's Degree: 1-3 years post-bachelor's.
- Doctoral Degree: 7-9 years post-bachelor's.

Your choice should align with your long-term career aspirations and personal circumstances. Remember, vocational training is a viable and often expedient path to a fulfilling career, particularly for those interested in practical, hands-on professions.

## ***Preparing for the Journey***

***Planning School Search Test Prep Student Support***

### **PLANNING FOR SUCCESS**

Embarking on an educational journey is a monumental choice with many considerations. The process of planning for a successful educational experience is a deliberate one, requiring thoughtful inquiry and strategic decision-making. Consider:

- What are higher education's tangible and intangible benefits, and how do they align with my personal and professional goals?
- How do I select a school that aligns with my learning style, career aspirations, and lifestyle preferences?
- What study area will fuel my passion and position me for success in the job market?
- What types of financial aid can I access, and what are the steps to secure these resources?
- What other resources and tools can assist me in preparing for post-secondary education or transitioning into the workforce?

These questions are a starting point, a launchpad for deeper exploration. The answers will form the foundation of your educational plan, a blueprint for academic and career success.

## SCHOOL SELECTION PREPARATION

### Accrediting Commission of Career Schools and Colleges

[www.accsc.org](http://www.accsc.org)  
Find accredited trade and technical schools across the U.S.

### College Board

[www.collegeboard.org](http://www.collegeboard.org)  
Offers SAT, AP, CLEP exams, college planning tools, and scholarship searches.

### COLLEGEdata

[www.collegedata.com](http://www.collegedata.com)  
Advice and tools for college selection, including scholarship finder.

### Common App

[www.commonapp.org](http://www.commonapp.org)  
Streamlines the college application process for multiple colleges.

### Cappex

[www.cappex.com](http://www.cappex.com)  
College and scholarship search tool with insights into applications and merit aid.

### FAFSA4caster

[fafsa.ed.gov](http://fafsa.ed.gov)  
Tool to estimate federal student aid eligibility.

### KnowHow2GO

[knowhow2go.acenet.edu](http://knowhow2go.acenet.edu)  
Information on college preparation and financing from middle school onward.

### Mapping Your Future

[www.mappingyourfuture.org](http://www.mappingyourfuture.org)  
College, career, financial aid, and financial literacy services.

### National Center for Education Statistics College Navigator

[nces.ed.gov/collegenavigator](http://nces.ed.gov/collegenavigator)  
Includes a searchable database for vocational and technical programs.

### Peterson's

[www.petersons.com](http://www.petersons.com)  
Detailed information on colleges, universities, and continuing education programs.

### Trade-Schools.net

[www.trade-schools.net](http://www.trade-schools.net)  
A comprehensive guide to trade schools and vocational training programs.

### Vocational Training HQ

[www.vocationaltraininghq.com](http://www.vocationaltraininghq.com)  
Resource for finding vocational training opportunities in various trades.

### YouVisit

[www.youvisit.com](http://www.youvisit.com)  
Virtual college tours for exploring campuses online.



## TEST PREPARATION & ACADEMIC SUPPORT

### Chegg

[www.chegg.com](http://www.chegg.com)  
Resources for textbooks, tutoring, study tools, and scholarship connections.

### Educational Testing Service

[www.ets.org](http://www.ets.org)  
Offers standardized testing and study guides for exams like GRE and TOEFL.

### Kaplan, Inc.

[www.kaplan.com](http://www.kaplan.com)  
Test preparation materials and programs for standardized tests.

### The Princeton Review

[www.princetonreview.com](http://www.princetonreview.com)  
Test preparation materials, programs, and a college search database.



## What To Do & When To Do It

### SPRING AWAKENING: MARCH - JUNE

- High School Juniors: Start your financial aid discussions early. This is also the prime time for SAT Subject Tests to bolster your college application.
- Career Pathfinders: Open the door to your future with the Alaska Career Information System portfolio. Discover a world of careers, colleges, scholarships, and more at [acpe.alaska.gov/planning/akcis](http://acpe.alaska.gov/planning/akcis).

### SUNLIT EXPLORATION: SUMMER

- Experience Hunters: Dive into volunteering, internships, or work to enrich your CV. High schoolers, now's the time to shine academically with summer courses.
- Test Takers: Sharpen your pencils and your minds with SAT prep courses to maximize your score potential.

### HARVESTING OPTIONS: SEPTEMBER - DECEMBER

- College Explorers: Attend fairs and open houses and gather college info. Pinpoint the criteria that will guide your college selection.
- Academic Navigators: A reality check with your guidance counselor helps to align your grades with your college aspirations.

### A SEASON OF CHOICES: FEBRUARY - MAY

- Standardized Challenge: Register for the SAT or ACT. Your scores can open gates to colleges of your choice.
- Campus Voyagers: Visit colleges, engage with the community there, and attend more fairs to fine-tune your list.
- Application Architects: Begin the application process. Those considering ROTC or military academies should also start their applications now.

### THE AUTUMN OF DECISIONS: SEPTEMBER - OCTOBER

- Deadline Detectives: Keep a vigilant eye on all important dates. Submit applications, essays, and resumes, and solicit recommendations.
- Strategists: Trim down your college list with the help of your support system.

### WINTER'S ENDEAVOR: NOVEMBER - DECEMBER

- Financial Strategists: Deep dive into financial aid. Tackle the FAFSA and other key financial aid forms to secure your funding.

### NEW YEAR'S RESOLUTIONS: JANUARY

- Local Opportunists: For Alaskan students, state aid applications are your focus. Remember, processing may take time.
- Scholarship Seekers: Explore scholarships offered by high schools, colleges, and community organizations.

### THE FINAL STRETCH: MARCH-MAY

- Decision Makers: Assess your acceptances, weigh your options, and declare your choice. Complete AP exams and send final transcripts to your chosen institution.

### THE LAUNCHPAD: JUNE - AUGUST

- Freshmen-in-Waiting: Participate in orientations, finalize your payments, and prepare for the academic launch!

### STAYING INFORMED

- Always be mindful of application deadlines and stay abreast of changes in student loan policies or grant opportunities.



**GET READY**

### TCF'S NEW ONLINE APPLICATION SYSTEM LAUNCHES APRIL 1, 2024

The CIRI Foundation is excited to announce our new online application process.

Key points to note:

- **New Accounts:** ALL applicants must create a NEW account.
- **First Step - Eligibility Documents:**
  - **Prior Recipients:** Simply upload a statement within your application indicating when you received TCF funding between 2011-2024.
  - **All Other Applicants:** Ensure all required documents are readily available for upload.
- **Apply Early:** We recommend applying as soon as possible to ensure a smooth application.



# UNDERSTANDING FINANCIAL AID: THE GATEWAY TO EDUCATION

*Financial aid is the lifeline for countless students in bridging the gap between aspirations and reality. It encompasses a suite of options to make higher education accessible to all. This chapter isn't just about understanding the types of financial aid available; it's about building a practical, actionable plan to fund your dreams. With the right approach, financial aid can be the bridge that carries you from hope to higher education.*

## **Financial Aid Options**

**Grants Scholarships Tuition Waivers Loans Work-Study Programs**

**Grants:** Gifts that fuel your educational journey without the burden of repayment.

**Scholarships:** Merit-based awards celebrating your achievements and unique qualities.

**Tuition Waivers:** Institutional nods that reduce your tuition, making education more attainable.

**Work-Study Programs:** Earn-as-you-learn programs that contribute to your educational expenses.

**Special Discounts:** Cost-saving opportunities extended by institutions under specific conditions.

**Loans:** Borrowed funds that are your investment in the future, to be repaid with interest.

### **CRAFTING YOUR FINANCIAL STRATEGY FOR EDUCATION**

Strategize your financial approach by considering:

**Cost of Attendance:** Sum up every educational expense, from tuition to living costs.

**Expected Family Contribution:** A figure derived from FAFSA that defines your family's capacity to contribute.

**Financial Need:** This is the gap between your total costs and what you can afford.

### **DECIPHERING COLLEGE COSTS**

Your educational expenses will include:

**Direct Costs:** These are your tuition, fees, and academic materials.

**Indirect Costs:** Accommodation, meals, travel, and miscellaneous personal expenses.

**Special Expenses:** Costs like ongoing medical needs or child care that can affect your budget.

### **STEPS TO FULFILL FINANCIAL NEEDS**

**Audit College Costs:** Understand the full cost at your chosen institution.

**Assess Your Funds:** How much can you and your family contribute?

**Seek Out Aid:** Research scholarships, grants, and work-study opportunities.

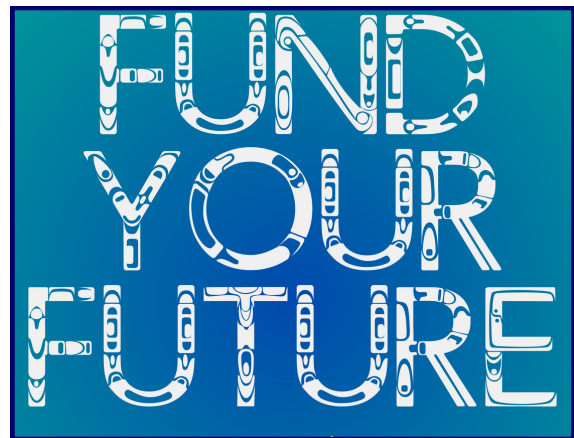
**Record Everything:** Track all applications and responses meticulously.

**Communicate with Financial Aid Offices:** Inform them of your financial aid status.

**Work on Breaks:** Use vacation times as opportunities to earn additional funds.

**Document Aid for Taxes:** Some financial aid may be taxable, so keep detailed records.

**Leverage Tax Credits:** Don't overlook potential tax benefits for education.



**INFORMED CHOICES NOW  
PAVE THE WAY FOR  
FUTURE SUCCESS**



## VISUALIZE WITH A BUDGET

Drafting a budget helps you visualize and balance your financial resources.

### Calculate Your Need:

$$\text{Total Funds} - \text{Total Expenses} = \text{Your Financial Need}$$

### Sources of Funding

1. Personal contribution
2. Tuition Waiver
3. Veterans Administration Aid
4. State/Federal Aid
5. Scholarships and fellowships
6. Tribal scholarships/grants

### Expenses to Consider

1. Tuition
2. Student Fees
3. Book & Supplies
4. Campus Housing
5. Campus Meal Plan
6. Daily Expenses
7. Daily transportation/airfare

## ACCESSING FINANCIAL AID RESOURCES

**Educational Support Centers:** Utilize TRIO

(<https://www.uaa.alaska.edu/students/trio-programs>) for personalized aid guidance.

**School Counselors:** Tap into their knowledge for a wealth of local and national scholarships.

**College Aid Offices:** Get tailored information about financial aid directly from the source.

**State and Cultural Organizations:** Discover grants and scholarships catered to your heritage.

**Libraries and Online Databases:** These hubs offer various financial aid options.

**Employer and Community Scholarships:** Uncover opportunities provided by local businesses and community groups.

**Professional Associations:** Sector-specific organizations can offer career-related financial aid.

**Internet Sleuthing:** Targeted searches can yield scholarships tailored to your unique situation.

**Federal Work-Study:** This program allows you to work part-time while studying, helping to cover education costs and offering valuable experience.

## EFFECTIVE FINANCIAL PLANNING

**Aid Counseling:** Financial aid counselors can provide personalized advice to navigate your options and manage your educational finances.

**Budgeting Tools:** Budgeting tools are indispensable for keeping track of your finances during your studies and beyond.

## UNDERSTANDING STUDENT LOANS

**Federal vs. Private Loans:** Federal loans are often more advantageous due to lower interest rates and flexible repayment options. Private loans from banks and financial entities typically come with higher rates and stricter terms. Weigh the pros and cons carefully.

**Repayment Plans:** There are a variety of repayment plans available. From standard to income-driven, each affects your repayment schedule and the total cost differently. It's crucial to select the one that aligns with your financial situation.

**Loan Forgiveness Programs:** Particular careers, especially in public service or healthcare, may offer loan forgiveness. Such options are worth exploring, especially if you're in a vocational training program.

**Credit Score Considerations:** Understanding how loans impact your credit is important. Consistent, timely repayments can enhance your credit history.

## KEY CONSIDERATIONS FOR LOANS

**Consolidation:** Consolidating loans may simplify repayments, but it's not always the best move. Consider the implications carefully.

**Deferment and Forbearance:** Understand the circumstances under which you can postpone or reduce payments. These options can provide relief during financial hardship.

**Tax Benefits:** You may be eligible for tax deductions on student loan interest, so be informed about such benefits.

**Industry-Specific Opportunities:** Look for scholarships, grants, or tuition reimbursement programs within your chosen vocational field.

## NAVIGATING STUDENT LOAN & GRANT PROGRAMS

Borrowing for education is a significant step towards investing in your future. It's crucial to approach student loans cautiously, recognizing them as obligations that typically cannot be discharged in bankruptcy. However, when approached with informed planning, student loans can transform into a valuable investment, making higher education attainable. Engage closely with your institution's financial aid office to thoroughly understand the terms and conditions associated with any loan.

### Alaska Commission on Postsecondary Education

Visit ACPE to access low-cost student and family education loan programs alongside an educational grant. ACPE's offerings are updated annually, so it's vital to stay informed about deadlines and program changes directly on their website.

#### *Alaska Advantage Education Grant*

This need-based grant supports Alaska residents embarking on undergraduate studies at eligible institutions within the state. Ensuring your FAFSA is completed before June 30th is essential for eligibility.

#### *Highlighted Alaska Advantage Loan Programs*

- A.W. "Winn" Brindle Memorial Education Loan: Tailored for students in fisheries-related studies, this loan offers forgiveness under certain conditions.
- Alaska Family Education Loan: Designed for family members supporting students in collegiate or vocational programs.
- Alaska Supplemental Education Loan: A low-cost option for students enrolled at least half-time in eligible institutions within Alaska or for Alaska residents studying elsewhere.
- Alaska Teacher Education Loan: Aimed at those aspiring to teach in rural Alaska communities, with nominations required from rural school districts.
- Michael Murphy Education Loan: For undergraduate students pursuing careers in law enforcement fields.
- Professional Student Exchange Program: Supports studies in specialized fields with residency tuition benefits. It includes a repayment obligation for support fees financed through a PSEP loan.

### U.S. Department of Education Direct Loans

For comprehensive federal loan options, visit [www.studentaid.gov](http://www.studentaid.gov). The Direct Loan program encompasses subsidized and unsubsidized loans, PLUS loans for parents and graduate students, and consolidation options. The U.S. Department of Education serves as the lender rather than a bank, emphasizing the need to complete FAFSA as part of the application process.

These resources and programs offer a variety of options to finance your education. Exploring each pathway thoroughly is crucial, understanding the commitments and opportunities they present. Whether seeking assistance through state-specific programs like those offered by ACPE or navigating federal loan options, informed decision-making is key to effectively managing your educational investments.



### Department of Education

[www.ed.gov](http://www.ed.gov)  
Central resource for federal educational policies, research, and financial aid.

### Federal Student Aid - U.S. Department of Education

[www.studentaid.gov](http://www.studentaid.gov)  
Information on federal student aid, including eligibility and loan management.

### FinAid! & FastWeb

[www.finaid.org](http://www.finaid.org)  
[www.fastweb.com](http://www.fastweb.com)  
Comprehensive sites with financial aid information and scholarship databases.

### Scholarships.com

[www.scholarships.com](http://www.scholarships.com)  
Online database for browsing a vast array of scholarships.



## FEDERAL STUDENT AID PROGRAMS

Federal Student Aid Programs play a pivotal role in making higher education accessible. These programs, administered by the U.S. Department of Education, offer a broad spectrum of financial support for students at post-secondary institutions. Understanding the various types of aid can help you effectively plan for your educational expenses.

### Types of Federal Student Aid

- **Federal Pell Grants:** These grants are awarded based on financial need and do not require repayment.
- **Direct Loans:** The U.S. Department of Education offers parents subsidized and unsubsidized student loans and PLUS loans.
- **Campus-Based Programs:** This category includes the Federal Supplemental Educational Opportunity Grants and Federal Work-Study programs, providing grant money and part-time work opportunities.
- **Perkins Loans:** Although the Perkins Loan program has ended, existing loans offer low-interest rates for students with exceptional financial needs.

It's important to note that not all schools participate in every federal student aid program. Always check with your school's financial aid office to confirm available programs.

### Applying for Federal Student Aid

The Free Application for Federal Student Aid is the gateway to accessing federal student aid. Completing the FAFSA is essential for determining your eligibility for federal grants, work-study programs, loans, and many state and private aid opportunities.

- **Application:** [studentaid.gov/h/apply-for-aid/fafsa](https://studentaid.gov/h/apply-for-aid/fafsa)
- **Help Center:** [studentaid.gov/help-center](https://studentaid.gov/help-center)

Call the Federal Student Aid Information Center at (800) 433-3243 for assistance.

**WHAT?!**

In 2022, Alaskan students received an average Pell Grant of \$4,243, yet **an astonishing \$7 MILLION in available funds remained UNCLAIMED** within the state. Across the U.S., the unclaimed funds reached a staggering \$3.6 billion. This highlights a crucial opportunity: by completing the FAFSA, students can access these funds, using them as a foundation for their educational financing. Taking advantage of this funding can significantly reduce future financial burdens, enabling more savings for later. All eligible students need to fill out the FAFSA and tap into these unused resources, securing the financial support designed to aid their educational journey.

### Maximizing Education Tax Credits

In addition to direct aid, the U.S. government offers education tax credits, which can significantly reduce your education costs.

- **Lifetime Learning Credit:** This credit helps cover undergraduate, graduate, and professional degree courses, including courses to acquire or improve job skills.
- **American Opportunity Credit:** Aimed primarily at undergraduates for the first four years of higher education, this credit covers expenses like tuition, course materials, and fees.

You can only claim one of these credits in a given tax year, and eligibility depends on your (or your family's) modified adjusted gross income and the amount spent on qualified education expenses.

For more details on claiming these credits and determining eligibility, visit the IRS Tax Benefits for Education Information Center.

Understanding and leveraging the available federal student aid programs and tax credits can dramatically reduce the financial burden of higher education. Start early, ask questions, and make informed decisions to invest wisely in your future.

### Bureau of Indian Affairs - Bureau of Indian Education

3601 C St., Suite 1100, Anchorage, AK 99503  
(907) 271-1536 [www.bia.gov/bie](http://www.bia.gov/bie)

The federal government offers several programs for U.S. citizens and permanent residents, including specific scholarship and grant opportunities for Alaska Natives and other Native Americans. These programs are primarily administered through the Bureau of Indian Affairs and receive federal funding.

Eligibility for these scholarships and grants often extends to members or descendants of members of Alaska village tribal councils. To explore these opportunities, students can apply through their local village tribal council in Alaska or contact the BIA office in Anchorage for a list of higher education contractors in Alaska.



**FILL OUT THE FAFSA**

# LEVERAGING ANCSA FOR EDUCATIONAL ADVANCEMENT

The Alaska Native Claims Settlement Act of 1971 significantly transformed the landscape for Alaska Natives, creating unique opportunities, particularly in education. This act established several entities designed to support Alaska Natives through scholarships, grants, and other forms of assistance. Understanding your connection to these entities can unlock numerous educational opportunities.

## REGIONAL AND VILLAGE CORPORATIONS

ANCSA led to the formation of regional corporations where Alaska Natives became shareholders, known as "original enrollees." These corporations, tasked with managing regional resources, play a pivotal role in fostering the welfare of their shareholders, including educational support.

### Examples of Regional Corporations

- Arctic Slope Regional Corporation
- Bristol Bay Native Corporation
- Cook Inlet Region, Inc.
- Doyon, Ltd.

In addition, over 270 village corporations were established, focusing on local resource management to benefit their communities.

## NONPROFIT ENTITIES AND EDUCATION FOUNDATIONS

Adjacent to these for-profit corporations, a network of nonprofit entities and education foundations emerged, concentrating on delivering crucial services such as education and housing to Alaska Native shareholders.

### Examples of Nonprofit Education Foundations

- Arctic Education Foundation
- BBNC Foundation
- The CIRI Foundation
- Doyon Foundation

These foundations frequently offer scholarships and grants tailored to Alaska Natives, with eligibility often linked to shareholder status or familial connections to original shareholders.

## TRIBAL COUNCILS

Beyond corporations and foundations, ANCSA's enactment complemented the efforts of several tribal councils recognized under the Indian Reorganization Act of 1934. These councils strive to promote local self-governance and community welfare.

### Examples of Tribal Councils

- Native Village of Barrow
- Curyung Tribal Council (Dillingham)
- Native Village of Eklutna
- Native Village of Eagle

## EMBRACING CULTURAL IDENTITY IN EDUCATION

The rich cultural heritage of Alaska Natives is not just a source of personal identity but also a valuable asset in educational pursuits. Engaging with the entities established under ANCSA can provide substantial support for those seeking to further their academic or vocational training ambitions. This engagement not only aids in personal advancement but also contributes to preserving and promoting Alaska Native culture and self-determination.

Understanding and navigating the landscape created by ANCSA can seem daunting, but the opportunities it presents for educational advancement are profound. By connecting with these entities and leveraging the resources they offer, Alaska Natives can significantly enhance their educational journey and career prospects, all while honoring and sustaining their rich cultural legacy.

**important**  
CHECK WITH THE VILLAGE CORPORATIONS AND TRIBES  
IN ALL THE REGIONS YOU ARE ASSOCIATED WITH FOR  
EXCLUSIVE FUNDING OPPORTUNITIES AVAILABLE TO YOU.

## ***Alaska Native Scholarships***

### ***ANCSA Education Consortium***

*Numerous student financial aid programs and unique opportunities are available throughout Alaska, specifically catering to Alaska Native students. These programs may include both academic and vocational training scholarships and grants, reflecting a growing recognition of the diverse educational paths pursued by students.*



### **KEY ELIGIBILITY CRITERIA**

Eligibility for these scholarships and grants typically depends on:

- Tribal membership, or being a descendant of an Alaska Native enrollee.
- Shareholder status of a regional or village corporation or tribal council established under the Alaska Native Claims Settlement Act of 1971.

### **STEPS TO DETERMINE ELIGIBILITY**

**Research:** Directly request scholarship and grant guidelines from organizations and foundations offering these opportunities.

**Affiliation:** Contact organizations you are affiliated with to inquire about scholarship and grant options. This includes regional village corporations or tribal councils.

**Application Process:** Ensure you understand each scholarship or grant program's application process, deadlines, and specific requirements.



### **KEY RECOMMENDATION**

Before embarking on your scholarship application journey, it's essential to familiarize yourself with your tribal and regional family affiliations. These connections are important in establishing your eligibility for specific funding opportunities. We strongly advise working with your family to assemble all required documentation, positioning you to take full advantage of every scholarship you qualify for.



## 2023 Excellence Scholarship Spotlight

Ann Caindec's indigenous heritage is intricately woven into her identity, her roots stemming from a Tlingit mother and a Hawaiian father. This rich upbringing instilled a profound respect for tradition and a boundless curiosity about the world, nurtured through annual summers spent in the heart of Alaska, connecting with her mother's ancestral heritage. She said Alaska holds a special place in her heart, declaring, "It's my favorite place in the world."

### Academic Pursuits at Gonzaga

Ann embarked on her academic journey at Gonzaga University in Spokane, Washington. There, she pursued a major in English and a minor in Psychology and Native American studies, fully immersing herself in her love for the written word and her insatiable appetite for reading and writing. "English has always been my favorite subject," Ann confides. "I love words."

### A Literary Sojourn in Oxford

Her quest for knowledge transcended borders when she ventured abroad during her junior year for a transformative experience. Her academic sojourn led her to the hallowed halls of Oxford University in England, where she passionately delved into Victorian novels, poetry, and the timeless works of Shakespeare, reveling in the intellectual journey.

Ann recounts, reflecting on her time there, "I took Victorian novels and poetry in Oxford, and then I took Shakespeare at Oxford. It was so much fun!"

### Discovering Passion for Law

Ann's path to the field of law was illuminated during a pivotal internship at the Bureau of Indian Affairs Alaska Region, facilitated by the Cook Inlet Tribal Council. This experience provided invaluable insights into tribal governance and federal Indian Law, sparking the flame of her advocacy.

Ann reflects on that transformative period, saying, "The experience made me realize I wanted to work on behalf of tribes."

### Championing Indigenous Rights

Continuing her educational voyage, Ann found herself at CITC's legal department. From humble

beginnings as an intern, she rapidly ascended to become an apprentice, ultimately crafting her unique role as a legal project specialist. Her specialization in intellectual property law was a natural fit, aligning seamlessly with her steadfast commitment to preserving the treasures of Native culture and heritage.

"I concentrated on intellectual property law, especially protecting our culture, stories, language, and dance," Ann passionately shares. "AI introduces new challenges to defining ownership."

### UCLA Law: A Full-Ride Scholarship and Native Community

A momentous milestone in Ann's journey was her acceptance into UCLA Law School, a defining moment marked by her recognition as a Graton Scholar, securing a full-ride scholarship—a distinction awarded to only five Native students per law class. She articulates her sentiments about UCLA Law, stating, "UCLA Law has a dedicated native community, which sets it apart from many other law schools. I'm grateful for the support and the Graton Scholarship."

### Community Support: A Catalyst for Success

Ann's journey underscores the pivotal role of community support. As a CIRI descendant and now a shareholder, she received unwavering backing from CIRI family organizations such as TCF, SCF, and CITC. Her tenure as a Raise intern at SCF played an instrumental role in solidifying her belief in the profound significance of community engagement and support.

### A Vision for the Future

Ann's inspiring odyssey serves as a beacon of hope and accomplishment, a true embodiment of the values cherished by The CIRI Foundation. Her unwavering determination propels her to pursue a legal career and her aspiration to inspire the next generation of Native youth to follow their dreams.

### Ann Caindec Gonzaga Grad

In her own words, she reflects, "It's amazing to have such strong community support. I'm excited to attend law school and, afterward, return to work here, inspiring other Native kids to do the same."

# THE CIRI FOUNDATION

Established in 1982 by the board of directors of Cook Inlet Region, Inc., an Alaska Native Claims Settlement Act corporation, The CIRI Foundation is a testament to the forward-looking vision of its founders. TCF is dedicated to fostering individual self-development and economic self-sufficiency through education while also nurturing a deep sense of pride in the cultural heritage among CIRI's Alaska Native original shareholders, their descendants, and voting shareholders.

At the heart of TCF's mission is the commitment to propel the educational and professional advancement of its Alaska Native beneficiaries. This commitment is actualized through the provision of post-secondary scholarships and grants, alongside the support of research and educational projects. Since its inception, The CIRI Foundation has been a pivotal force in realizing the educational aspirations of our community. Together with our partners, TCF has allocated nearly \$50 million toward enabling the participation of CIRI's Alaska Native beneficiaries in post-secondary education.

The lifeblood of TCF's programs and administrative operations is sourced primarily from private sector contributions, with a significant portion of these funds derived from the earnings of the Foundation's various endowments. Notably, CIRI stands as the cornerstone contributor, underscoring its unwavering commitment to the educational empowerment of its people. **Funding for all awards is contingent upon the availability of resources.**

## ELIGIBILITY FOR SCHOLARSHIP PROGRAM

Applicants qualified for our scholarship programs include original Cook Inlet Region, Inc. shareholders, and their direct descendants, encompassing natural or legally adopted children, grandchildren, and others. Additionally, The CIRI Foundation offers specialized funding opportunities through its Raven Fund, aimed exclusively at voting CIRI shareholders who are not original shareholders nor their direct descendants.

## Village Scholarship and Education Grants

The CIRI Foundation provides support for post-secondary education through non-BIA funds to Alaska Native original shareholders and their direct descendants from Eklutna, Inc., Salamatof Native Association, Inc. (including spouses for SNAI), as well as original shareholders of Ninilchik Native Association, Inc., their direct descendants, and Alaska Native NNAI shareholders.

**START SIMPLE**

 **REGISTER AS A DIRECT DESCENDANT OF AN ORIGINAL CIRI SHAREHOLDER**

**Don't wait until application time - establish your eligibility early and pave the way for a stress-free application process.**



APRIL 1 - JUNE 30

OCTOBER 1 - DECEMBER 31

APPLY ONLINE



SUMMER  
SCHOOL  
FUNDING  
AVAILABLE

## TCF SCHOLARSHIP PROGRAM WWW.THECIRIFOUNDATION.ORG

**General Scholarship:** Eligibility requires a high school diploma or GED; acceptance or current enrollment in a 2-year or 4-year undergraduate or graduate program, either part-time or full-time. Applicants must apply online and maintain a minimum GPA of 2.0. Applications are accepted online April 1 through June 30.

**Mid-Year General Scholarship:** This award caters to students starting their studies in the winter/spring term, offering financial aid for one semester/term. Requirements include online application submission and a minimum 2.0 GPA. Applications are accepted October 1 through December 31.

**Achievement Annual Scholarship:** This merit-based scholarship is designed for individuals who demonstrate academic excellence, requiring a minimum GPA of 3.0. To be eligible, candidates must be accepted and enrolled full-time in a four-year undergraduate or graduate degree program. Selection for this award is made through the General Scholarship Program application process.

**Excellence Annual Scholarship:** Awarded for superior academic performance and notable community involvement, this scholarship requires a minimum GPA of 3.5. It supports accepted students pursuing full-time studies in a four-year undergraduate or graduate degree program. Selection for this award is made through the General Scholarship Program application process.

**High School Graduating Senior Excellence Annual Scholarship:** Tailored for high school seniors stepping into higher education, this scholarship demands a minimum GPA of 3.5. Candidates must embark on full-time education in a four-year undergraduate or graduate program directly after graduation.

### DESIGNATED ENDOWMENTS AND NAMED FUNDS FOR SCHOLARSHIPS

The CIRI Foundation oversees specific endowments and named funds established by community members to honor individuals and acknowledge achievements. These scholarships are available to original shareholders of CIRI and their direct descendants:

- Cap Lathrop Endowment Scholarship
- John N. Colberg Endowment Scholarship Fund
- Roy M. Huhndorf Endowment Scholarship Fund
- Peter Kalifornsky Memorial Endowment Fund
- Keck/Westmin Endowment Scholarship Fund
- Carl H. Marrs Scholarship Fund
- Lawrence Matson Memorial Endowment Scholarship Fund
- Kirby McDonald Education Endowment Scholarship Fund
- Jason Moore Scholarship Fund
- William D. Phillips Scholarship Fund
- Margaret L. Brown Scholarship Fund
- Penny Carty Scholarship Fund
- Dr. Tamara Pickett (English) Scholarship Fund

#### Eligibility and Requirements:

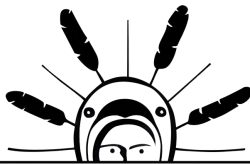
- High school diploma or GED
- Acceptance or current enrollment in a full-time program at a two-year, four-year, undergraduate, or graduate level
- A minimum GPA of 2.0, though some scholarships specify higher requirements.
- The CIRI Foundation determines these scholarships' award categories and selections through the General Scholarship Program application process.

### JUMP START AWARDS

Tailored for high school students who are direct descendants of CIRI original shareholders, Jump Start Awards support enrollment in accredited "Running Start" programs and other sanctioned post-secondary educational paths. These opportunities allow students to simultaneously earn high school and post-secondary credits, providing a seamless transition to higher education. Eligible applicants are required to uphold a GPA of 2.0 or higher.

### RAVEN FUND AWARDS

The Raven Fund extends its support to CIRI voting shareholders, who are not original shareholders or their direct descendants, by backing educational journeys from associate to doctorate levels. Explore the possibilities with the Raven Fund for your educational objectives by visiting TCF online.



THE CIRI FOUNDATION



## 2023 Raven Fund Spotlight



Anita Johnson's academic pursuit at Western Governors University, fueled by the TCF Raven Fund, epitomizes the transformative power of this scholarship on its beneficiaries' lives. As she embarks on her Health and Human Services degree, Anita becomes the first in her family to attend college and paves a path of inspiration and success for others.

"I am the first person in my family to go to college, and this would not be possible without the generosity of The CIRI Foundation," TCF Recipient Anita Johnson said.

## 2023 Excellence Scholarship Spotlight

When Carter Eaton first set foot at Arizona State University four years ago, he thought it would be a seamless transition from high school. Little did he know that his initial course, Engineering 101, would catalyze academic rigor and spark a newfound love for learning and problem-solving. The complexity and depth of his industrial engineering courses solidified this passion, catapulting him into a league where he relished intellectual challenges.



### Turning the Tide for the ASU Waterski Team

Carter's enthusiasm is not limited to academics; it spilled over into his passion for waterskiing. As he rose through the ranks to become the president of the ASU Waterski team, he saw an opportunity to effect real change.



"We were showing up to nationals in rented airport shuttle buses, without a coach, and parking next to teams in full tracksuits unloading a Greyhound bus with their school logo on it," Carter said.

Faced with limited funding and competing against fully-backed athletic programs, the scenario became even more daunting during the pandemic. Undeterred, Carter and the team launched a transformative journey. Adopting a business-savvy approach, the team transitioned into a registered nonprofit and started a series of innovative fundraising campaigns. These ranged from hosting "Chipotle Nights" to negotiating sponsorships with local businesses.

The result? Enough funds to help the team rewrite history, becoming the first club team to earn a podium finish at the nationals.

"With enough cash flow to support proper facilities and a brand new boat, we were able to recruit the best junior skiers in the world, persuading them to join our team instead of accepting scholarships elsewhere," Carter said.

### The Power of Community Support

Carter's leadership journey went beyond mastering waterski techniques or securing funding. It was about nurturing a culture of empowerment and realizing the transformative power of collective effort.

"I learned to listen to those around me and enable them to achieve their full potential, and I discovered the limits of my own capabilities and the necessity of collective effort," Carter said.

And his educational journey isn't just a personal victory; it's a testament to what we accomplish when a community comes together to support one of its own. Before Carter could fully grasp the extent of his capabilities, TCF was investing in his potential. As he gears up for his next adventure, Carter is grateful for a community that believed in him from day one.

"Without your support, attending college likely would have remained a dream. I am honored to have been given this opportunity by my own people. From the bottom of my heart, thank you," Carter said.

## AHTNA REGION

### Ahtna, Inc.

110 W. 38th Ave., Anchorage, Alaska 99503  
(907) 868-8250 | www.ahtna.com  
scholarship@ahtna.net

The Walter Charley Memorial Scholarship Program funds Ahtna shareholders to assist in meeting their educational goals. Ahtna, Incorporated, provides funding for the Walter Charley Memorial Scholarship. The priority of the WCMS is to help support direct educational expenses, including tuition, student registration fees, course-required books/supplies, and other school-related expenses. For more information, please visit [www.ahtna.com/shareholders/walter-charley-memorial-scholarship](http://www.ahtna.com/shareholders/walter-charley-memorial-scholarship).

Ahtna is excited to announce a new scholarship for shareholders pursuing a Natural Resources degree or related field of study (forestry, wildlife, etc.). At a minimum, there will be one Natural Resources Scholarship available each calendar year. Scholarship preference will be given to accredited programs in Alaska. Scholarship amounts:

- Up to \$15,000 per semester, \$120,000 individual lifetime.
- NRS includes tuition, books, student housing, and college/university fees. This scholarship's funding can also cover required course equipment, childcare, and other related expenses.

The NRS program follows the same application process as the Walter Charley Memorial Scholarship program.

## ALEUT REGION

### The Aleut Foundation

4000 Old Seward Hwy, Suite 202,  
Anchorage, AK 99503  
(907) 646-1929 | [www.thealeutfoundation.org](http://www.thealeutfoundation.org)  
[taf@thealeutfoundation.org](mailto:taf@thealeutfoundation.org)

TAF provides scholarships to Alaska Native original shareholders and descendants of The Aleut Corporation and the Aleutian Pribilof Islands Restitution Trust. The Aleut Foundation has a variety of scholarships to serve a spectrum of student needs. Postsecondary educational opportunities are within your reach whether you're a returning student or a young high school graduate.

TAF issues scholarships in the following categories:

- Honors: Enrolled full-time, minimum 3.5 GPA
- Exceptional: Enrolled full-time, minimum 3.0 GPA
- Achievement: Enrolled full-time, minimum 2.5 GPA
- Merit: Enrolled full-time, minimum 2.0 GPA.
- Part-time: Enrolled in at least 3 credit hours with a minimum 2.0 GPA.
- Graduate: Enrolled in a minimum of 6 credit hours, maintain a 3.0 GPA and admitted into a graduate program.
- Working Full-time: Enroll in at least 9 credit hours, maintain a 2.0 GPA, and provide a letter from their employer stating the student is working more than 30 hours per week.
- Advanced College Credits: Enrolled in high school taking college courses and maintaining a 2.0 GPA. Students will need to apply each semester for this scholarship.

## Aleutian Pribilof Islands Association

1131 E. International Airport Road,  
Anchorage, AK 99518  
(907) 276-2700 | [www.apiai.org](http://www.apiai.org) | [apiiai@apiiai.org](mailto:apiiai@apiiai.org)  
Assistance for eligible, tribally enrolled, full-time (12 or more credits) students to attend an accredited higher-education institution to obtain an associate or baccalaureate degree. Provide documentation of tribal membership of Akutan, Belkofski, False Pass, Nikolski, Nelson Lagoon, Pauloff Harbor and Unga. Must reside on island, in any Alaska community or U.S. city.

APIA also administers training assistance programs, including leadership opportunities, on-the-job placement, internships and vocational training for up to 24 months (non-concurrent) can be eligible for some stipend or training funding. Must be an enrolled tribal member of Akutan, Atka, Agdaagux, Belkofski, False Pass, Nikolski, Nelson Lagoon, Pauloff Harbor, St. George, St. Paul, Qawalangin, Unga and QTT and reside in any Alaska community or U.S. city.

## ARCTIC SLOPE REGION

### Arctic Education Foundation

P.O. Box 129, Utqiagvik, AK 99723  
3900 C St., Suite 302, Anchorage, AK 99503  
(907) 852-8633 | [arcticed@asrc.com](mailto:arcticed@asrc.com)  
[www.arcticed.com](http://www.arcticed.com)

Eligible applicants must be an original shareholder or a direct lineal descendant of an original shareholder of the Arctic Slope Regional Corporation. Applicant must be accepted in an accredited U.S. college, university, technical or vocational training school. High school graduate or GED. All applications are online at <https://arcticed.smapply.io>.

#### Deadlines

- Aug. 1 (Fall Semester/Fall Quarter)
- Dec. 1 (Spring Semester/Winter Quarter)
- March 1 (Spring Quarter) or
- May 1 (Summer Semester)

#### Scholarships

2 Year Programs (associate degree, certificate)

- \$3,833 per quarter
- \$5,750 per semester
- \$11,500 yearly limit

4 Year Program (bachelor's degree)

- \$4,500 per quarter
- \$6,750 per semester
- \$13,500 yearly limit

Graduate Programs (masters, doctorate)

- \$7,167 per quarter
- \$10,750 per semester
- \$21,500 yearly limit

**Competitive Awards:** Based on merit. Applicant must have demonstrated leadership qualities throughout high school or college/training. These awards include the Anaġi Leadership Award, Ivalu Scholarship Award, and At-Large High School Scholarship Award. Deadline: June 30

**Short-Term Training Award:** Training of four months or less to obtain a certificate or license that is required to take on a job or to support development within a current position. This application is open year-round.

## BERING STRAITS REGION

### **Beringia Settlement Trust Scholarship**

3301 C St., Suite 100, Anchorage, Alaska 99503  
(907) 563-3788 | [www.beringstraits.com](http://www.beringstraits.com)

[www.my-cache.org](http://www.my-cache.org) | [shdevelopment@bsnc.net](mailto:shdevelopment@bsnc.net)

Eligible applicants must be an original shareholder of Bering Straits Native Corporation or their direct lineal descendants. Scholarships are competitive, needs- and merit-based, and depend on the availability of funds. Amounts and criteria are subject to change. For questions about programs or eligibility, please get in touch with BSNC's Shareholder Development Department at [shdevelopment@bsnc.net](mailto:shdevelopment@bsnc.net).

**College/University:** Award up to \$2,000 per semester for undergraduate programs and up to \$3,000 per semester for graduate programs. Applicants must apply each semester; award amounts are based on full-time/part-time status and grade-point average. Applicants must demonstrate financial need. College/university applicants must be enrolled in an accredited U.S. college or university program pursuing an associate, bachelor, graduate or doctoral degree. A high school diploma or GED certificate is required, and applicants must maintain a 2.0 GPA each term.

**Vocational Training:** Award up to \$2,000. Applicants must be enrolled in an accredited or recognized certificate or training program. A high school diploma or GED certificate is required, and applicants must demonstrate a financial need.

**Martin L. Olson Memorial Scholarship:** Students do not apply separately for this scholarship. Award up to \$500. Applicants must demonstrate financial need. The scholarship award is for the fall semester, and one is given each year. Applicants must be enrolled full-time in an accredited educational institution or vocational school and maintain a 2.0 GPA or higher.

**Tim Towarak Memorial Scholarship:** Students do not apply separately for this scholarship. \$10,000 award. One scholarship award per year. Candidates are professional career-track students passionate about advocating for or serving Alaska Native people. Preference for the scholarship award is given to Alaska resident students. Applicants must be college or university junior, senior, or graduate students enrolled full-time and maintain a minimum 3.5 cumulative GPA.

Applications are available online.

#### **Deadlines**

- Fall: June 30 for courses that typically begin in August and end in December.
- Spring: Dec. 1 for courses that typically begin in January and end in May.
- Summer: May 1 for courses that typically start in May and end in August.
  - Vocational: Six (6) weeks before training start date.

### **Kawerak, Inc.**

P.O. Box 948, Nome, AK 99762  
(907) 443-5231 | (844) 943-5231

[www.kawerak.org](http://www.kawerak.org) | [contactekawerak.org](mailto:contactekawerak.org)

Provides training grants and college scholarships to tribal members enrolled to a tribe located within the Bering Strait Region (Tribal members of Gambell and

Nome Eskimo Community must apply to their local IRA Council). Provides semester or quarterly scholarships to tribal shareholders accepted into a two-year or four-year degree program.

### **Norton Sound Economic Development Corporation**

2701 Gambell St., Suite 400, Anchorage, AK 99501  
(907) 274-2248 | [www.nsedc.com](http://www.nsedc.com)

Available to Norton Sound Residents. Scholarships are available to students enrolled full-time and part-time (with a full-time job) at an accredited college, university, or vocational school. In addition, NSEDC is one of five organizations that provides an all-in-one application for students in the Norton Sound region. Through MyCache, students fill out one application with questions for each scholarship.

## BRISTOL BAY REGION

### **Bristol Bay Foundation**

111 W. 16th Ave., Suite 400, Anchorage, AK 99501  
(907) 265-7810 | [www.bristolbayfoundation.org](http://www.bristolbayfoundation.org)

[bbf@bristolbayfoundation.org](mailto:bbf@bristolbayfoundation.org)

Provides annual higher education and triannual vocational education scholarships to Bristol Bay Native Corporation shareholders and eligible descendants enrolled in an accredited college, university, or vocational institution. Applicants must have a high school diploma or GED—minimum 2.0 GPA for awards. Please check the Bristol Bay Foundation website for guidelines, eligibility, updates, and deadlines.

## CALISTA REGION

### **Calista Education and Culture, Inc.**

5015 Business Park Blvd., Suite 3000,  
Anchorage, AK 99503

(907) 275-2800 | [scholarships@calistacorp.com](mailto:scholarships@calistacorp.com)  
[www.calistaeducation.org](http://www.calistaeducation.org)

Applicant must be a Calista Corporation voting shareholder or descendant (natural born or legally adopted) of an original shareholder. Applicant must have a high school diploma or GED with a cumulative GPA of 2.0 or higher. In addition, official transcripts from most recent trade, vocational, colleges, or universities attended must be submitted. Or official transcripts from graduating high school or a copy of GED if there is no college or university attendance.

Scholarships are awarded on a fall and spring term basis in alignment with the application deadline. Scholarships may cover tuition, books, and fees. The scholarship recipient must have a 2.0 or higher GPA and maintain and complete a full-time or part-time status for the entire semester/quarter they received the scholarship. Deadlines: June 30 for the fall term and December 1 (official transcripts due by January 5) for the spring term. Online applications are available.

### **Kuskokwim Education Foundation**

4300 B St., Suite 405, Anchorage, AK 99503  
(907) 243-2944

[www.kuskokwim.com](http://www.kuskokwim.com) | [kefekuskokwim.com](mailto:kefekuskokwim.com)

Administers scholarships for eligible shareholders of The Kuskokwim Corporation who are accepted or

enrolled in accredited post-secondary or vocational training programs. Applicants must be high school or GED graduates.

*General Scholarship:* Awarded to eligible TKC shareholders admitted full-time or part-time into an accredited post-secondary or vocational training program. Minimum 2.5 cumulative GPA. The award is subject to available funding.

*Leo Morgan Memorial Scholarship:* Applicants meeting general scholarship eligibility, demonstrating financial need, and having a minimum 3.5 GPA or higher will be considered. Annual award subject to available funding.

*Palmetto Scholarship:* Applicants meeting general scholarship eligibility enrolled in an aerospace major or closely related field of study and having a minimum 3.0 GPA or higher will be considered. Annual award subject to available funding.

*Mary Morgan Wolf Memorial Scholarship* Alaska Native students from the Middle Kuskokwim region applicants enrolled in a health-related field of study with a minimum 3.0 GPA or higher will be considered. Annual award subject to available funding.

*Glenn "Tiny" Fredericks Memorial Scholarship:* Applicants meeting general scholarship eligibility who are enrolled in a business-related field with a minimum 3.0 GPA or higher will be considered. Annual award subject to available funding.

*Nick Mellick Memorial Scholarship:* Applicants meeting general scholarship eligibility enrolled in a business-related field of study with a minimum 3.0 GPA or higher will be considered. Annual award subject to available funding.

Non-traditional scholarships for non-degree-seeking adult learners:

*Personal Development:* To enhance personal life skills in and out of the workplace, such as time management, project management, conflict resolution or home finance courses.

*Professional Development:* To enhance employability skills, improve professional performance and complete continuing education requirements for licensure and certifications. This may include study programs, conferences or training, workshops, and webinars.

*Cultural Learning:* To support costs associated with completing or teaching courses that enhance and knowledge and skills related to Alaska Native cultures, such as language courses, heritage/cultural camps, beading, sewing, carving, fish cutting or other culturally focused workshops.

### **Donlin Gold Kuskokwim Education Foundation**

4300 B St., Suite 405, Anchorage, AK 99503  
(907) 243-2944 | dgkef@kuskokwim.com  
www.kuskokwim.com

The Donlin Gold Kuskokwim Education Foundation promotes education and vocational training for TKC Shareholders interested in the mining industry, along with expanded opportunities for mining-related and support industry training. Applicants must have attained a high school diploma or GED. Minimum 2.0 GPA or higher. Awards are subject to available funding.

## **CHUGACH REGION**

### **Chugach Alaska Corporation**

3800 Centerpoint Drive, Suite 1200,  
Anchorage, AK 99503  
(907) 563-8866 | (907) 261-0368  
www.chugach.com

shareholderdevelopment@chugach.com  
Providing services to Chugach Alaska Corporation shareholders and descendants of shareholders.

*Apprenticeship Program:* Provides on-the-job training for Chugach shareholders and descendants in various specialized fields. Apprentices work for one to two years based on need and skillset. Regional apprentice opportunities are available in village communities. Entry and mid-level apprenticeships are available at the corporate office in Anchorage.

*Internship Program:* Provides resources to full-time college students to obtain their degree while gaining valuable work experience. Interns work under the supervision of a manager of Chugach Alaska Corporation or one of its subsidiaries/business partners. Minimum 2.0 GPA in each class. High school graduate or GED.

*Training Without Walls:* A two-year leadership training program tailored to develop the soft skills needed to succeed personally and professionally. This program allows you to network with other shareholders and descendants. Topics include communication, time management, conflict resolution and presentation skills.

*Shareholder Business Assistance Program:* A micro-grant for the start-up or expansion of a shareholder or descendant-owned business, this program nurtures entrepreneurs by offering grants up to \$10,000 toward their business. You must have a valid business license and proposal to apply. Funds may not go toward refinancing an existing small business loan. Grants are taxable and must be expended within one year of the award.

*Alaska Native Executive Leadership Program:* This graduate-level certificate program is through Alaska Pacific University. The program prepares the next generation of leaders for management positions in Alaska Native corporations. Candidates must have the education and experience needed to enroll in the program. In addition, candidates must be current Chugach employees to receive the in-house training required.

*Discretionary Scholarship:* Funding available for barriers to employment. Shareholders and descendants can contact Shareholder Development for more information.

### **Chugach Heritage Foundation**

3800 Centerpoint Drive, Suite 1200,  
Anchorage, AK 99503  
(907) 261-0400 | scholarships@chugach.com  
www.chugachheritagefoundation.org

Chugach Heritage Foundation offers six different scholarship programs to provide resources for Chugach Alaska Corporation's original shareholders and registered lineal descendants pursuing higher education. You can find more scholarship details on the CHF website or scholarship portal, scholarships.chugach.com.

*CHF College Scholarship Program:* Applicants must be accepted into an accredited program. Maintain a minimum GPA of 2.0 with a grade of "C" or better in all CHF-funded coursework. Applicants enrolled at less than full-time status are awarded a prorated scholarship. Applicants are eligible for up to \$5,750 at the freshman/sophomore level and up to \$7,250 at the junior/senior level per academic year.

- Fall Semester Deadline: August 30, 2024
- Winter Quarter/Spring Semester: December 30, 2024
- Spring Quarter Deadline: March 29, 2024
- Summer Deadline: May 3, 2024

*CHF Vocational Scholarship:* Applicant must be registered in any recognized vocational/certificate/ license-based training program. Up to \$5,750 is available per calendar year. Students must apply before the program's start date.

*CHF Graduate Scholarship:* Applicant must be enrolled in an accredited graduate-level program. Students can receive up to \$12,100 per academic year. This is a competitive scholarship—the annual deadline is June 28th.

*Barney Uhart Memorial Scholarship Program:* Applicants must be entering the junior or senior year of their undergraduate program or be enrolled in a graduate program. Applicants awarded this scholarship will participate in a paid summer internship (two summer commitments) and be eligible to receive up to \$10,000 in additional CHF scholarship funding. Travel and lodging expenses are covered. This is a competitive scholarship—the annual deadline is December 30th.

*Reboot Scholarship Program:* This program is for previous CHF scholarship recipients who have not received CHF scholarship funding within the last 5 years due to CHF grade requirement ineligibility and are looking to re-enroll in a degree plan.

*Regional Focus Scholarship Program:* This is an incentive scholarship that can award up to \$1000 for applicants pursuing education in specific careers that are in demand within the Chugach Region. The 2023–2024 focus areas are Education, Maritime, and Medical programs.

*Discretionary Scholarship Program:* Limited funding is available to assist with unique educational and cultural opportunities.

## **Chugachmiut Tribal Organization**

1840 Bragaw St., Suite 110  
Anchorage, AK 99508  
(907) 562-4155 | info@chugachmiut.org  
www.chugachmiut.org

They are providing awards to participants. The scholarship seeks to ensure eligible individuals have the tools to find steady and long-term employment through training and career development resources, referrals, apprenticeship and higher-education information, and advocating for Native hire. Deadlines: June 10 & Dec. 10.

## **DOYON REGION**

### **Doyon Foundation**

601 Bidwell, Suite 101, Fairbanks, AK 99701  
(907) 459-2049 | scholarships@doyon.com  
www.doyonfoundation.com

This foundation provides scholarships to Doyon, Limited enrollees and children of original enrollees. It offers basic, vocational and competitive scholarships to students in various fields. Applicants should have a high school diploma or GED, except for the advanced college credit award. Applicants must apply online.

*Competitive and Basic Scholarship:* Applicant must be enrolled in an accredited college, university, technical or vocational school in a program at least six weeks or 120 hours long. Maintain a minimum 2.0 GPA for undergraduate students, 3.0 for graduate or master's degree students or 3.25 for specialists or doctorate students. Competitive recipients must be attending school full-time. Competitive scholarships are up to \$11,000 and are awarded once per year. Basic recipients can apply for part-time (\$1,600) or full-time (\$2,400) scholarships and can apply three times per year. See the website for deadlines.

*Short Term Vocational Scholarship:* Applicants must be enrolled in a course or program that is less than 120 hours, less than one year and may not be enrolled in a degree program. Students may apply at any time throughout the year, receive funding equal to the course cost not exceeding \$3,000, and receive funding once per year—funding provided on a first-come, first-served basis.

*Advanced College Credit Scholarship* is available only to high school students enrolled in college courses if the school district does not pay for advanced placement classes. Students may apply year-round for funding. Doyon Foundation will award the actual cost of the course or program, not to exceed \$400, provided on a first-come, first-served basis.

## **COOK INLET REGION**



### **The CIRI Foundation**

3201 C St., Suite 506, Anchorage, AK 99503  
(907) 793-3575 | tcf@thecirifoundation.org  
www.thecirifoundation.org

The CIRI Foundation administers scholarships, grants, fellowships, and internships to qualified Alaska Native people of the Cook Inlet Region. See The CIRI Foundation and Tribal Councils and Associations of Cook Inlet sections for more information.

## KONIAG REGION

### Koniag Education Foundation

3800 Centerpoint Drive, Suite 702,  
Anchorage, AK 99503

(907) 562-9093 | kef@koniageducation.org

<https://koniageducation.org>

KEF administers merit-based scholarships and various programs for eligible Koniag, Inc. shareholders and descendants. Applicants must be accepted or enrolled in accredited institutions of higher learning or vocational schools. In addition, applicants must be graduating high school seniors or high school or GED graduates.

*Career Development Scholarship:* Awarded to individuals enrolled in non-degree programs such as licensing and certification training, workshops, or other career-advancing programs through an accredited educational institution. Up to \$1,000 per year. Apply at least three weeks before the start of the program. Open continuously.

*Vocational Scholarship:* Awarded to individuals interested in non-degree technical education and training through an accredited educational institution. Up to \$5,000 per year. Apply at least four weeks in advance. Open continuously.

*Step-Up Scholarship:* A one-time, one-year bridge scholarship for students who still need to attain a 2.5 cumulative GPA. Students denied a continuing KEF General due to an ineligible GPA must wait two years before applying for this award. Students must pursue a degree through an accredited educational institution. Open: December 15. Close: March 15.

*KEF General Scholarship:* Students with a minimum 2.5 GPA or equivalent pursuing a degree through an accredited educational institution may apply. Part-time applicants must take two classes and six credits or more per term. Award amounts vary based on budget and applicant scores. Open: December 15. Close: March 15.

*Partner Scholarship:* Koniag Angayuk Scholarship/Internship helps Koniag identify, cultivate and encourage future leaders by allowing students to gain relevant work experience at one of Koniag's departments (e.g., human resources, legal, finance, shareholder services, lands) or subsidiaries (e.g., Kodiak Brown Bear Center, OST, Koniag Government Services) for six to 10 weeks during the summer. Students receive a stipend during their internship; funding will cover travel and lodging. In addition, students who meet the obligations of the scholarship will continue to receive an annual scholarship of \$10,000 throughout their current degree program. Must maintain a 3.0 cumulative GPA as a full-time student; upper-level students preferred. Open: November 15. Close: February 15.

*Special Scholarships:* Minimum 3.0 cumulative GPA required; sophomore standing or higher; and full-time students only.

*Glenn Godfrey Sr. Memorial Scholarship:* \$5,000 awarded to one student yearly with the highest combined KEF general application score plus GPA score. No additional application is needed. Applicants must pursue education in careers that exemplify positive leadership roles in community service or civic duty.

*Larry Mattfay Cultural Heritage Scholarship:* Up to \$1,000 will be awarded to one student per year with the highest combined KEF General application score plus GPA score. No additional application is needed. Applicants must be majoring in anthropology, history, Alaska Native or American Indian studies, or other disciplines that involve research and study of Alutiiq culture.

*Magnel Larsen Drabek Scholarship:* \$2,000 awarded to one student yearly with the highest combined KEF General application score plus GPA score. No additional application is needed. Applicants must be majoring in arts, education, or cultural studies.

*Brent Parsons Memorial Scholarship:* \$5,000 awarded to one student yearly with the highest combined KEF General application score plus GPA score. No additional application is needed. Applicants must be majoring in Finance, Accounting, or Business.

### Kodiak Area Native Association

3449 Rezanof Drive E, Kodiak, AK 99615

(907) 486-9800 | [www.kanaweb.org](http://www.kanaweb.org)

Higher education and vocational scholarships are available as a secondary funding resource for enrolled members of the Native Villages of Akhiok or Port Lions and/or eligible tribal members residing in the Koniag region seeking higher education, vocational training, degrees, certificates, licensing, or specifically defined professional development.

## NANA REGION

### Aqqaluk Trust

P.O. Box 509, Kotzebue, AK 99752

(907) 442-1607 | [aqqaluk.trust@aqqaluktrust.com](mailto:aqqaluk.trust@aqqaluktrust.com)

[www.aqqaluktrust.com](http://www.aqqaluktrust.com)

The Aqqaluk Trust awards scholarships to NANA shareholders, their descendants, and dependents pursuing college and post-graduate degrees and post-secondary education. See the website for scholarship deadlines. Vocational/Technical application and supporting documents must be completed before the first day of class.

### Maniilaq Association

P.O. Box 256, Kotzebue, AK 99752

(907) 442-7021 | [scholarships@maniilaq.org](mailto:scholarships@maniilaq.org)

[www.maniilaq.org](http://www.maniilaq.org)

The Workforce Development Department administers TANF and Employment and Training programs under the Public Law 102.477 Act. Its goal is to provide assistance, educate, train and empower our Tribal members to obtain and retain employment and to work on becoming self-sufficient and economically stable. The association administers the following programs: Higher Education, Adult Vocational Training, Workforce Investment Opportunity Act, Childcare Assistance, Job Placement and Training, TANF, General Assistance, and the Paaraq and James "Qigñak" Wells Endowment Scholarship. Check the website for deadlines and award amounts.

## SEALASKA REGION

### Central Council of Tlingit and Haida Indian Tribes

3239 Hospital Drive, Juneau, AK 99801  
(907) 463-7329 | [www.ccthita-nsn.gov](http://www.ccthita-nsn.gov)

The College Student Assistance Program provides financial aid to tribally enrolled citizens within the compact service area who attend (or plan to attend) an accredited college or university for post-secondary education. The Alumni Scholarship Assistance Program provides annual scholarship awards to all tribally enrolled citizens regardless of the service area, community affiliation, origination, residence, tribal impact or signatory status.

### Sealaska Heritage Institute

105 S. Seward St., Suite 201,  
Juneau, AK 99801  
(907) 463-4844 | [www.sealaskaheritage.org](http://www.sealaskaheritage.org)  
[scholarship@sealaska.com](mailto:scholarship@sealaska.com)

Provides scholarships to Alaska Natives who are Sealaska shareholders and descendants of shareholders. Accepted into an accredited college/university or vocational/technical school. Deadline: March 1.



TCF RECIPIENTS & ALUMNI

SHARE YOUR STORY

[WWW.THECIRIFOUNDATION.ORG/SHARE-YOUR-STORY](http://WWW.THECIRIFOUNDATION.ORG/SHARE-YOUR-STORY)



Not sure what to share? Need inspiration?  
Go to [www.thecirifoundation.org/recent-posts](http://www.thecirifoundation.org/recent-posts).



## **Tribal Councils & Associations of the Cook Inlet Region**

### **Cook Inlet Tribal Council**

**Chickaloon Eklutna Kenaitze Knik Ninilchik Salamantof Seldovia Tyonek**

Several tribal governments and regional associations within Cook Inlet Region administer federal Native American higher education scholarship and education grant programs for eligible and qualified Alaska Native members.

Tribal councils and associations also provide culturally relevant and unique opportunities.

#### **Chickaloon Village Traditional Council**

9255 N. Glenn Hwy, Chickaloon, AK 99645  
(907) 745-0749 | [www.chickaloon-nsn.gov](http://www.chickaloon-nsn.gov)

#### **Cook Inlet Tribal Council, Inc.**

3600 San Jeronimo Drive, Anchorage, AK 99508  
(907) 793-3600 | [www.citci.org](http://www.citci.org)

CITC provides scholarship funding to eligible Alaska Native CIRI shareholders and direct lineal descendants who meet the program's eligibility and requirements.

Vocational Training and Career Development provides vocational training funding and other services to eligible Alaska Natives who meet the program eligibility and requirements.

Alaska's People Career Development Center is open to all Alaska Natives living in the Anchorage area as a walk-in resource for those seeking employment, scholarship, and training opportunities.

- **Tribal Higher Education Scholarship:** Provides scholarship awards to applicants pursuing an undergraduate or graduate degree at an accredited college or university.
- **Alyeska Match Scholarship:** Offers matching financial aid to eligible applicants receiving other CITC funds to attend college in fields specified by Alyeska.

To apply, email [alaskaspeople@citci.org](mailto:alaskaspeople@citci.org).

**Tribal Training Grant:** Alaska Natives and American Indians residing within the Cook Inlet region may apply. The program offers to fund eligible students pursuing short-term certification or vocational training for job enhancement and employability at an accredited training facility.

#### **Eklutna Inc.**

16515 Centerfield Drive, Suite 201  
Eagle River, AK 99577

(907) 696-2828 | [www.eklutnainc.com](http://www.eklutnainc.com)

Offers unique and flexible programs that address potentials from early childhood development, general educational development, career advancement, cultural/fellowship grants and vocational or post-secondary education opportunities. Eligible applicants are original shareholders of Eklutna Inc. and their direct descendants. Contact Eklutna Inc. for more information on early childhood and GED support.

*Scholarships administered by*

*The CIRI Foundation*

*3201 C St., Suite 506, Anchorage, AK 99503*

*(907) 793-3575 | [tcf@thecirifoundation.org](mailto:tcf@thecirifoundation.org)*

*[www.thecirifoundation.org](http://www.thecirifoundation.org)*

*Grants administered by CITC*

*3600 San Jeronimo Drive, Anchorage, AK 99508*

*(907) 793-3600 | [www.citci.org](http://www.citci.org)*

#### **Kenaitze Indian Tribe**

35105 K-B Drive, Suite A, Soldotna, AK 99669

(907) 335-7606 | [www.kenaitze.org](http://www.kenaitze.org)

The Education and Career Development program supports the traditional Kahtnuht'ana Dena'ina value of education-passing down cultural knowledge and traditions and supporting formal education. Scholarships are open only to tribal members; job training is available for unemployed and underemployed Alaska Native and American Indian applicants. Award: up to \$4,000 per academic year.

#### **Knik Tribal Council**

951 E. Bogard Road, Suite 101, Wasilla, AK 99654

(907) 373-7991 | [www.kniktribe.org](http://www.kniktribe.org)

Job Placement and Training Program assists tribal members in developing a career and training plan. Employment and training will also help with referrals to appropriate community resources.

#### **Native Village of Eklutna**

26339 Eklutna Village Road, Chugiak, AK 99567

(907) 688-6020

[www.eklutna-nsn.gov](http://www.eklutna-nsn.gov) | [nve@eklutna-nsn.gov](mailto:nve@eklutna-nsn.gov)

#### **Native Village of Tyonek**

Tyonek, AK 99682

(907) 583-2201

**Ninilchik Native Association, Inc.**

15700 Sterling Highway, Ninilchik, AK 99639  
(907) 567-3866 | [www.nnai.net](http://www.nnai.net)  
NNAI provides scholarship funding to eligible Alaska Native shareholders and direct lineal descendants.

Minimum 2.5 GPA required.

Deadlines: Scholarships June 30 and December 31;  
Grants June 30.

*Funding is administered through The CIRI Foundation's online application.*

**Ninilchik Traditional Council**

P.O. Box 39070, Ninilchik, AK 99639  
(907) 567-3313 | [www.ninilchiktribe-nsn.gov](http://www.ninilchiktribe-nsn.gov)  
Provides scholarships to tribal members graduating from Ninilchik High School (one special scholarship per year) and scholarships to those attending an accredited educational institute. Adult vocational training is also available for Alaska Natives living within Ninilchik tribal boundaries.

**Salamatof Native Association, Inc.**

(907) 793-3575 | [www.thecirifoundation.org](http://www.thecirifoundation.org)  
[tcf@thecirifoundation.org](mailto:tcf@thecirifoundation.org)

Provides scholarship funding to eligible Alaska Native shareholders and direct descendants. Minimum 2.5 GPA required. Deadlines: June 30 and Dec. 31.

*Funding is administered through The CIRI Foundation online application.*

**Seldovia Native Association Foundation**

P.O. Box L, Seldovia, AK 99663  
(907) 234-7625 | [snai.com/sna-foundation](http://snai.com/sna-foundation)  
Provides scholarships to full-time students enrolled in an accredited undergraduate or graduate program who are SNAI shareholders or descendants. Minimum 2.0 GPA for scholarships.

**Seldovia Village Tribe**

Drawer L, Seldovia, AK 99663  
(907) 234-7898 | [www.svt.org](http://www.svt.org)

**Tyonek Native Corporation/  
Tebughna Foundation**

1689 C St., Suite 120, Anchorage, AK 99501  
(907) 646-3115 | [tebughnafoundation.com](http://tebughnafoundation.com)  
General Semester Scholarships: for students taking two-year or four-year college classes, either part-time or full-time. GPA minimum of 2.0; funding amount varies with GPA. Scholarships are awarded by semester. See the website for the deadline. Vocational/Technical Training: Vocational grants are for vocational or technical training students. Visit the website for award amounts. Applications are due 30 days before the start date.

## Tribal Scholarship Opportunities

**American Indian Endowed Scholarship**

[www.wsac.wa.gov](http://www.wsac.wa.gov)  
It provides financial assistance to American Indian undergraduate and graduate students with ties to Washington state. Funding priority is for upper division and graduate students intending to work with their tribe. Deadlines vary.

**Cherokee Nation, Office  
of Higher Education**

Tahlequah, OK | (918) 453-5000  
[www.cherokee.org](http://www.cherokee.org) [education@cherokee.org](mailto:education@cherokee.org)  
Provides scholarships to enrolled members of the Cherokee Nation pursuing higher education.

**Cheyenne and Arapaho  
Tribes of Oklahoma**

El Reno, OK | (800) 247-4612  
[www.cheyenneandrapaho-nsn.gov](http://www.cheyenneandrapaho-nsn.gov)  
Available to enrolled Cheyenne-Arapaho tribal members who are either undergraduate or graduate students at an accredited four-year or two-year university.

**Dakota Indian  
Foundation Scholarship**

Chamberlain, SD  
(605) 234-5472  
[www.dakotaindianfoundation.net](http://www.dakotaindianfoundation.net)  
It provides funding for the educational advancement of Native American students with priority to those of Lakota, Dakota or Nakota heritage. To be eligible, students must be sophomores, juniors or seniors and must have a minimum of 24 credit hours. Scholarships are for approved courses of study at an accredited college, university or vocational school.

**Eight Northern Indian  
Pueblos Council, Inc.**

Ohkay Owingeh, NM  
(505) 747-1593 | [www.enipc.org](http://www.enipc.org)  
It provides funding to full-time undergraduate students who are tribally enrolled in Picuris Pueblo, Pojoaque Pueblo or Tesuque Pueblo.

**Fort Peck Tribes**

Poplar, MT | (406) 768-2300  
[www.fortpecktribes.org](http://www.fortpecktribes.org)  
[eddept@fortpecktribes.net](mailto:eddept@fortpecktribes.net)  
Available to Assiniboine and Sioux members of the Fort Peck tribes in Montana. Applicants must be undergraduates or in vocational training.

## ***Alaska Native & Native American Scholarship Opportunities***

### **Hopi Tribal Grants and Scholarships**

Kykotsmovi, AZ | (928) 734-2275

[www.hopieducationfund.org](http://www.hopieducationfund.org)

Available to enrolled members of the Hopi Tribe. Applicants must have a high school diploma or GED and enroll in a regionally accredited college or university.

### **Hualapai Tribal Scholarship**

Peach Springs, AZ

(928) 769-2200

<http://hualapai-nsn.gov>

Available to members of the Hualapai Tribe for undergraduate funding. Contact the tribe for deadline and eligibility information.

### **Northwest Indian Housing Association Scholarships**

(306) 220-9212

[www.nwiha.org](http://www.nwiha.org)

It provides financial assistance to members of Indian tribes in the Pacific Northwest who are interested in attending college.

### **Northern Cheyenne Tribal Education Department**

(406) 477-6567 [www.cheyennation.com](http://www.cheyennation.com)

Available to enrolled members of the Northern Cheyenne tribe pursuing any undergraduate study at a postsecondary institution.

### **Office of Navajo Nation**

(866) 223-6457 [www.onnsfa.org](http://www.onnsfa.org)

It provides scholarships to enrolled members of the Navajo tribe who are undergraduate or graduate students at an accredited university may apply.

### **United South & Eastern Tribes**

Nashville, TN

(615) 872-7417 [www.usetinc.org](http://www.usetinc.org)

It provides supplemental scholarships to Indian students in the USET service area and enrolled members of one of the 25 USET member tribes.

### **Washington Indian Gaming Association Scholarship**

[washingtonindiangaming.org](http://washingtonindiangaming.org)

It provides financial assistance to members of Indian tribes in Washington who are interested in attending college or graduate school in Washington state.

### **The Alaska Community Foundation**

Anchorage, AK | (907) 334-6700

[www.alaskacf.org/scholarships](http://www.alaskacf.org/scholarships)

[scholarships@alaskacf.org](mailto:scholarships@alaskacf.org)

The Alaska Community Foundation awards a variety of scholarships to eligible Alaskans. Please review each scholarship's specific requirements and deadlines on the ACF website.

### **Alaska Native Brotherhood/Sisterhood Grand Camp Scholarship Program**

Juneau, AK | (907) 523-9839 [www.anbangsc.org](http://www.anbangsc.org)

The Grand Camp Scholarship Program is in a rebuilding period and is not currently dispersing any funds. Please visit the website for updates.

### **Alaska Native Community Advancement in Psych**

Anchorage, AK | (907) 786-1501

[www.uaa.alaska.edu](http://www.uaa.alaska.edu)

ANCAP addresses behavioral and mental health issues and promotes wellness among Alaska Native communities. Toward this mission, they strive to accomplish a variety of community- and student-oriented goals, including support for students from A.A. to Ph.D. studies in psychology and related fields.

### **Alaska Native Science and Engineering Program**

Anchorage, AK | (907) 786-1899

[www.ansep.net](http://www.ansep.net)

University of Alaska Anchorage ANSEP offers students interested in science, technology, engineering, or mathematics a pre-college program, a summer bridge program, and a university retention program. It helps students with scholarships and other opportunities to fund their education, plus internships.

### **Alaska Native Tribal Health Consortium**

Anchorage, AK | (907) 729-1301

[www.anthc.org/scholarship-opportunities](http://www.anthc.org/scholarship-opportunities)

[learning@anthc.org](mailto:learning@anthc.org)

ANTHC administers three scholarship programs to Alaska Native and American Indian residents of Alaska. ANTHC provides scholarships to applicants enrolled full-time at an accredited college or university as undergraduate or graduate students in a health profession program. ANTHC also offers scholarships to students enrolled in courses leading to entry to health professional schools in nursing, pharmacy, and other fields.

### **Alyeska Pipeline Service Co.**

#### **Alaska Native Scholarship Program (Alyeska Match)**

Anchorage, AK | (907) 787-8700

[www.alyeska-pipe.com](http://www.alyeska-pipe.com)

[aknp@alyeska-pipeline.com](mailto:aknp@alyeska-pipeline.com)

Applicants must be undergraduate students interested in pursuing a field of study related to the oil industry and have a GPA of 2.0 or higher. Maximum \$7,500 in total match and benefits per year. Majors may include business, engineering, science, and technology, among others. This scholarship program was established through funds from Alyeska Pipeline Service Co.

### **American Association of Airport Executives**

[www.aaae.org](http://www.aaae.org)

It offers financial assistance for Native American upper-division college students majoring in aviation. Full-time students in an aviation program must have a 3.0 GPA or higher.

**American Indian College Fund**

Denver, CO | (303) 426-8900

[www.collegefund.org](http://www.collegefund.org)[info@collegefund.org](mailto:info@collegefund.org)

It provides scholarship support to each tribal college. In addition, it administers several scholarship programs offered to American Indian students attending tribal colleges and state and private universities.

**American Indian Science & Engineering Society**

Albuquerque, NM

(505) 765-1052

[www.aises.org](http://www.aises.org) | [info@aises.org](mailto:info@aises.org)

AISES administers many programs, services and events for pre-college, undergraduate and graduate students designed to increase access to college and support success in preparation for careers in STEM fields.

**American Indian Services**

Provo, UT | (801) 375-1777

[www.americanindianservices.org](http://www.americanindianservices.org)[ais@americanindianservices.org](mailto:ais@americanindianservices.org)

It provides scholarships to undergraduate students one-quarter or more Northern Native American Indian with a minimum 2.25 GPA.

**Association of American Indian Physicians**

Oklahoma City, OK

(405) 946-7072 | [www.aaip.org](http://www.aaip.org)

Provides scholarships for medical and pre-med students to attend the annual AAIP workshops to Alaska Native or American Indian undergraduate or graduate students interested in the health field. Workshops are offered. Provides physicians, medical students, faculty, minority program staff, counselors, and other healthcare professionals a greater understanding of Western and Traditional Medicine. Additional scholarships and internships may be available.

**American Indian College Fund**

Denver, CO | (303) 426-8900

[www.collegefund.org](http://www.collegefund.org)[info@collegefund.org](mailto:info@collegefund.org)

It provides scholarship support to each tribal college. In addition, it administers several scholarship programs offered to American Indian students attending tribal colleges and state and private universities.

**Association on American Indian Affairs**

Rockville, MD | (240) 314-7155

[www.indian-affairs.org](http://www.indian-affairs.org)

The Association on American Indian Affairs Scholarship Scholarship recipients are awarded twice annually until they graduate, as long as they maintain a 2.5 GPA and full-time student status. The Association Scholarship focuses on students who will obtain a degree and serve their communities and Indian Country.

**ASU American Indian Student Support Services**

Browning, MT

(480) 965-8044 | [aiss.asu.edu](http://aiss.asu.edu)

It provides higher education scholarships and vocational training grants information for students of Arizona State University.

**Catching the Dream, Inc.**

Albuquerque, NM

(505) 262-2351

[www.catchingthedream.org](http://www.catchingthedream.org)

It provides scholarships to students one-quarter or more Alaska Native or American Indian enrolled member of a U.S. tribe. Awards are for full-time students based on merit and financial need.

**Continental Society Daughters of Indian Wars Scholarship**[www.csdiw.org/scholarships](http://www.csdiw.org/scholarships)

Open to Native American, certified tribal members with plans to work on a reservation. Must be an undergraduate junior or senior accepted to or already attending an accredited college/university, carry at least eight semester hours and have a minimum 3.0 GPA. Must be a U.S. citizen and demonstrate financial need. Deadline: June 15.

**Daughters of the American Revolution American Indian Scholarship**

Washington, D.C.

(202) 628-1776 | [dar.org](http://dar.org)

It offers scholarship awards to help Native American college, university and technical school students striving to get an education. Awards are based on financial need and academic achievement.

**Dr. Roe B. Lewis Memorial Scholarships**[www.swindianag.com](http://www.swindianag.com)

It provides financial assistance to American Indians studying agriculture or natural resources fields.

**Fort Lewis College Foundation Scholarship**

Durango, CO

(877) 352-2656

[www.fortlewis.edu/tuition-aid](http://www.fortlewis.edu/tuition-aid)[admissions@fortlewis.edu](mailto:admissions@fortlewis.edu)

Fort Lewis College offers Native American Tuition Waivers and Tribal Scholarships to attend Fort Lewis College tuition free. The student will still be responsible for payment of the college fees, room and board.

**Helen Trueheart Cox Art Scholarship**

Washington, D.C.

(202) 785-1997

[www.nlapw.org](http://www.nlapw.org)

It provides financial assistance to Native American women studying art for undergraduate or graduate work.

**Indian Health Services**

Rockville, MD

(301) 443-6197

[www.ihs.gov/scholarship](http://www.ihs.gov/scholarship)

It provides scholarships to undergraduate and graduate students that are Alaska Native or American Indian toward careers in healthcare. IHS currently funds three Health Career Scholarship Programs to train professional health personnel to staff IHS health programs serving the Indian people. Deadlines and annual award amounts vary.

**Intertribal Timber Council**

Portland, OR

(503) 282-4296

[www.itcnet.org](http://www.itcnet.org) | [itc@teleport.com](mailto:itc@teleport.com)

The ITC Truman D. Picard Scholarship Program provides scholarships to Native American and Alaska Native students pursuing higher education in natural resources and related fields (e.g., science).

**Joan Hamilton Memorial Scholarship at the American Civil Liberties Union of Alaska**

Anchorage, AK

(907) 258-0044

[www.acluak.org](http://www.acluak.org)[scholarship@acluak.org](mailto:scholarship@acluak.org)

This scholarship offers up to \$2,500 per academic year to fund college, graduate and vocational studies, with renewal awards available by reapplying. They invite applications from high school seniors or college and vocational students who pursue a career related to the law, become advocates of Alaska Native rights, and defend the people of rural Alaska's constitutional rights and civil liberties.



**Miss Indian USA Scholarship Program**

[www.indians.org](http://www.indians.org)

It aims to recognize and reward the most distinguished and talented Indian women, sponsored by the American Indian Heritage Foundation in Washington, D.C., each year. Native American women between 18 and 26 can enter this national contest.

**The Morris K. Udall Foundation**

Tucson, AZ  
(520) 901-8500  
[www.udall.gov](http://www.udall.gov)  
[info@udall.gov](mailto:info@udall.gov)

Awards scholarships and honorable mention awards based on merit to sophomore- and junior-level college students. Available to students committed to careers related to the environment or Native American and Alaska Native students committed to jobs in tribal public policy or Native health care.

**Native American Journalists ' Association Scholarships**

Norman, OK  
(405) 325-1649

[www.najanewsroom.com/students](http://www.najanewsroom.com/students)  
It provides financial assistance to student members of the Native American Journalists Association interested in a career in journalism or journalism education.

**Native American Political Leadership Program at the George Washington University**

Washington, D.C.  
(202) 994-2083

[cipp.cps.gwu.edu/naplp-program](http://cipp.cps.gwu.edu/naplp-program)  
The Native American Political Leadership Program is a full scholarship for Native American,

Alaska Native and Native Hawaiian students who want to participate in Semester in Washington Politics. It is open to undergraduate and graduate students, including those who have completed their undergraduate degrees but have yet to enroll in a graduate program. NAPLP is made possible by a generous grant from the AT&T Foundation.

**Partnership with Native Americans**

Addison, TX | (800) 416-8102  
[www.nativepartnership.org](http://www.nativepartnership.org)

PWNA provides scholarships to undergraduate and graduate Native American students focusing on applicants in the middle range of the academic ranking with drive and a demonstrated ability to overcome obstacles. Deadlines and amounts vary. It also provides grants to post-secondary schools to equip students with pre-requisite "tools for learning" that they need and cannot afford. In addition, PWNA provides grants and emergency funding to universities, tribal colleges and groups committed to American Indian education, retention and funding for Native American students.

**Preparing Indigenous Teachers & Administrators for Alaska Schools at UA Southeast**

Juneau, AK  
(907) 796-6058  
<https://uas.alaska.edu>

PITAAS is a mentor and teacher-training program to encourage and retain indigenous students. It provides scholarship funds for Alaska Native students who plan to teach in Alaska public schools after graduation. The program also supports those pursuing a Master of Arts in Teaching and/or Graduate Certificate, Principle Endorsement and M.Ed. students with mentorship and funding opportunities.

**Recruitment and Retention of Alaska Natives into Nursing at University of Alaska Anchorage**

Anchorage, AK | (907) 786-6978  
[uaa.alaska.edu/rrann](http://uaa.alaska.edu/rrann)

RRANN provides financial assistance for tuition and educational expenses to students enrolled in a nursing degree program through the University of Alaska Anchorage. Applicants must be Alaska residents. Preference goes to Alaska Native and American Indian students.

**Schmidt Charitable Trust**

Anchorage, AK | (907) 786-7445  
[www.schmidttrustalaska.org](http://www.schmidttrustalaska.org)

[SchmidtTrustAlaska@gmail.com](mailto:SchmidtTrustAlaska@gmail.com)  
The Edward and Anna Range Schmidt Charitable Trust offers grants and emergency financial assistance for Alaska Native students of Earth and Environmental Science. There are rolling application deadlines for internship support, travel, expenses related to workshops and science fairs, support needed to secure employment in science-related fields or emergency needs.

**Seattle Chapter of Association of Women in Science**

[www.seattleawis.org](http://www.seattleawis.org)

It provides financial assistance and work experience to Native American and women undergraduates from any state majoring in science, mathematics or engineering at colleges and universities in Washington.

**Society for American Archaeology Native American Scholarships**

(202) 789-8200

[www.saa.org](http://www.saa.org) | [info@saa.org](mailto:info@saa.org)

Scholarships are open to all Native peoples—an endowment established to foster a shared purpose and positive interaction between archaeologists and Native Americans.

**Southcentral Foundation**

(907) 729-8541

[Scfnuka.com/learning-program](http://Scfnuka.com/learning-program)  
[SCFAcademicPrograms@southcentralfoundation.com](mailto:SCFAcademicPrograms@southcentralfoundation.com)

Clinical Initiatives Scholarship opportunities for Alaska Native and American Indian people pursuing health care careers.

It provides full tuition and a living stipend for AN/AI students pursuing degrees in nursing or behavioral health, or certificates to be a certified medical assistant or dental health aide therapist. Recipients are supported during their educational journey with formal mentorship and cohort activities. Application periods open annually in May and October.

**Winners for Life Foundation Scholarship**

[www.wflfoundation.org](http://www.wflfoundation.org)

It provides financial assistance to Native American college students studying any field at any tribal college or university.

## Minority Scholarship Opportunities

### American Association of Women Dentists

Chicago, IL | [info@aawd.org](mailto:info@aawd.org)  
[www.aawd.org](http://www.aawd.org)

It provides scholarships to dental students who show academic distinction and demonstrate excellence in research.

### American Association of University Women

Washington, D.C. | (202) 785-7700  
[www.aauw.org](http://www.aauw.org) [connect@aauw.org](mailto:connect@aauw.org)  
Administers scholarships, fellowships, grants and internship programs to advance education, research and self-development for women and to foster equity and positive societal change.

### American Dental Hygienists Association

Chicago, IL | (312) 440-8900  
[www.adha.org/ioh-scholarships-main](http://www.adha.org/ioh-scholarships-main)  
[education@adha.net](mailto:education@adha.net)

It provides scholarships for dental students, underrepresented minority dental students and allied dental students, including dental hygiene, dental assisting and dental laboratory technology.

### American Geosciences Institute

Alexandria, VA | (703) 379-2480  
[www.americangeosciences.org](http://www.americangeosciences.org)  
It provides scholarships to ethnic-minority students enrolled full-time at an accredited institution in a geoscience program, including the sub-disciplines of geology, geophysics, geochemistry, hydrology, physical oceanography, planetary geology and earth science education.

### American Institute of Certified Public Accountants

New York, NY | (212) 596-6200  
<https://thiswaytocpa.com>  
[academics@aicpa.org](mailto:academics@aicpa.org)

It provides scholarships to minority students enrolled full-time as undergraduates or graduates in an accounting program at an accredited four-year institution.

### American Meteorological Society Minority Scholarships

(617) 227-2425  
[www.ametsoc.org](http://www.ametsoc.org)

It provides award funding to minority students traditionally

underrepresented in the sciences, primarily Native American, Hispanic and African American.

### American Nuclear Society Scholarship Program

[www.ans.org/scholarships](http://www.ans.org/scholarships)  
It provides financial assistance to Native Americans and other graduate students interested in preparing for a career in nuclear-related fields.

### American Physical Therapy Association

[www.apta.org](http://www.apta.org)  
It provides financial assistance to Native Americans and minority students interested in becoming physical therapists or physical therapy assistants.

### American Society of Landscape Architects

Washington, D.C.  
(202) 898-2444  
It provides financial assistance to upper-division students, especially Native Americans and disadvantaged and underrepresented groups, working on a degree in landscape architecture.

### Association for Women Geoscientists Scholarship

[www.awg.org](http://www.awg.org)  
It provides financial assistance to Native American and minority women working on an undergraduate degree in geosciences.

### BDPA Education & Technology Foundation

College Park, MD | (513) 284-4968  
[www.betf.org](http://www.betf.org) | [info@betf.org](mailto:info@betf.org)  
It provides financial assistance to students from underserved communities studying computer science, mathematics, information technology and related fields.

### Bill Dickey Golf Scholarships

Phoenix, AZ | (602) 258-7851  
[www.billdickey.org](http://www.billdickey.org)  
[info@billdickey.org](mailto:info@billdickey.org)  
It provides scholarships to graduating high school seniors and current undergraduate students members of minority groups. Selection is based on academic achievement, personal recommendations, and participation in golf, school and community activities as well as financial need.

### Educational Foundation for Women in Accounting

Dayton, OH | (937) 424-3391  
[www.efwa.org](http://www.efwa.org) | [info@efwa.org](mailto:info@efwa.org)  
It provides several scholarships for female accounting students at undergraduate and graduate levels.

### Ethel Montgomery Scholarship Fund

[www.foslam.org/scholarship](http://www.foslam.org/scholarship)  
It provides financial assistance to students pursuing an undergraduate or graduate degree in museum studies. Applicants must be enrolled in a federally recognized tribe in Alaska. See the website for the application deadline and more information.

### Generation Google Scholarship

[www.google.com/edu/scholarships](http://www.google.com/edu/scholarships)  
It provides financial assistance to Native Americans and minorities planning to work on a bachelor's degree in a computer-related field.

### Breakthrough to Nursing Scholarships

[www.forevernursing.org](http://www.forevernursing.org)  
It provides financial assistance to minority undergraduate and graduate students to prepare for careers in nursing. Check the website for details, including additional programs that may be eligible for scholarships.

### Brown & Caldwell Minority Scholarship

Lakewood, CO | (800) 727-2224  
<https://brownandcaldwell.com>  
[scholarships@brwncald.com](mailto:scholarships@brwncald.com)  
It provides financial assistance to minority students working on an undergraduate degree in environmental science or engineering. Applicants must have a 3.0 GPA and declare a major in civil, chemical or environmental engineering or environmental science (e.g., biology, ecology, geology, hydrogeology, industrial hygiene, toxicology).

### Dwight Mosley Scholarships

White Plains, NY | (914) 696-7223  
[www.ustafoundation.com](http://www.ustafoundation.com)  
It provides financial assistance for college to high school seniors from diverse ethnic backgrounds who participate in an organized community tennis program.

### **Educational Foundation for Women in Accounting**

Dayton, OH | (937) 424-3391  
www.efwa.org | info@efwa.org  
It provides several scholarships for female accounting students at undergraduate and graduate levels.

### **Ethel Montgomery Scholarship Fund**

www.foslam.org/scholarship  
It provides financial assistance to students pursuing an undergraduate or graduate degree in museum studies. Applicants must be enrolled in a federally recognized tribe in Alaska. See the website for the application deadline and more information.

### **Generation Google Scholarship**

www.google.com/edu/scholarships  
It provides financial assistance to Native Americans and minorities planning to work on a bachelor's degree in a computer-related field.

### **Goldman Sachs Scholarship for Excellence**

www.goldmansachs.com  
It provides financial assistance and work experience to Native Americans and underrepresented minority students preparing for a career in financial services.

### **Horace & Susie Revels Cayton Scholarship**

Seattle, WA | (206) 623-8632  
www.prsapugetsound.org  
It provides financial assistance to Native Americans and other minority upper-classmen from Washington State who are interested in preparing for a career in public relations.

### **Hyatt Hotels Fund for Minority Students**

Washington, D.C. | (202) 289-3180  
www.ahlef.org/scholarships  
It provides financial assistance to Native American and minority students working on a degree or certificate in hotel management.

### **Industry Minority Scholarships**

Washington, D.C. | (617) 227-2425  
www.ametsoc.org  
amsinfo@ametsoc.org  
It provides financial assistance to Native American and underrepresented minority students entering college to major in meteorology or atmospheric sciences. See the website for the deadline.

### **The Lagrant Foundation**

Los Angeles, CA  
(323) 469-8680, ext. 240  
www.lagrantfoundation.org  
It provides undergraduate and graduate scholarships and support like mentorship to minority students in advertising, marketing and public relations. Scholarship recipients also receive a trip to Detroit for career-building activities.

### **Marcia Silverman Minority Student Award**

www.prssa.prssa.org  
It provides financial assistance to Native Americans and minority college seniors preparing for a career in public relations.

### **Minorities in Government Finance Scholarship**

www.gfoa.org/gfoa-scholarships  
It provides financial assistance to Native Americans and minority upper-division and graduate students preparing for a career in state and local government finance.

### **Minority Nurse Scholarship Program**

https://minoritynurse.com  
Scholarship money abounds for students pursuing undergraduate or graduate education in nursing. All awards have various recipient criteria, including financial need, academic achievement and involvement in community service. In addition, some awards require the recipient to work in a specific location (often a medically underserved area) after graduation.

### **Minority Scholarship Awards for Chemical Engineering**

www.aiche.org/community/awards  
It provides financial assistance for the undergraduate study of chemical engineering to Native Americans and underrepresented minority student members of the American Institute of Chemical Engineers. 3.0 GPA required.

### **Minority Scholarship in Classics & Archaeology**

https://classicalstudies.org  
It provides Native Americans and minority undergraduates with summer training as preparation for advanced work in the classics or classical archaeology. This program includes a scholarship supported by the Gladys Kriebel Delmas Foundation.

### **Moss Adams**

Foundation Scholarship  
www.efwa.org/scholarships.php  
It provides multiple scholarship opportunities to women working on accounting degrees at the undergraduate, graduate and postgraduate levels. Moss Adams also offers financial support through the Women in Transition program.

### **Mutual of Omaha Actuarial Scholarship**

www.mutualofomaha.com  
It provides financial assistance and work experience to Native Americans and minority undergraduate students preparing for an actuarial career.

### **National Nurses United**

Silver Spring, MD | (240) 235-2000  
www.nationalnursesunited.org  
It provides financial assistance to students from diverse ethnic backgrounds enrolled in an associate program in nursing in California.

### **National Oceanic & Atmospheric Administration Partnership with Minority Serving Institutions**

sanctuaries.noaa.gov/education  
It provides financial assistance and research experience to students attending minority-serving institutions and majoring in scientific fields of interest to NOAA.

### **National Weather Association Scholarships**

Norman, OK | (405) 701-5167  
www.nwas.org  
NWA has multiple scholarships and grants available for students working toward careers in meteorology and weather service fields; amounts vary. The David Sankey Minority Scholarship provides financial assistance to Native Americans and minority students working on undergraduate or graduate degrees in meteorology.

### **The Ninety-Nines, Inc.**

Oklahoma, OK | (405) 685-7969  
www.ninety-nines.org  
The 99s promote fellowship through flight, networking and scholarship opportunities for women and preserve the unique history of women in aviation.

### **Northwest Journalists of Color Scholarship**

www.wa.aajaseattle.org  
It provides financial assistance to

Native Americans and minority students from Washington State interested in journalism careers.

**NSCA Minority Scholarships**  
[www.nasca.com](http://www.nasca.com)

It provides financial assistance to Native Americans and other minority students interested in working toward an undergraduate or graduate degree in strength training and conditioning.

**PDEF Mickey Williams Minority Student Scholarship**  
[www.snmmi.org/AboutSNMMI](http://www.snmmi.org/AboutSNMMI)

It financially assists Native American and minority students working on an associate or bachelor's degree in nuclear medicine technology.

**Richard B. Fisher Scholarship**  
[www.morganstanley.com](http://www.morganstanley.com)

It provides financial assistance and work experience to members of underrepresented groups planning for a career in technology within the financial services industry.

**Royce Osborn Minority Student Scholarships**  
[foundation.asrt.org](http://foundation.asrt.org)

Funded by an endowment from the American Registry of Radiologic Technologists, this scholarship provides financial assistance to minority students enrolled in entry-level radiologic sciences programs.

**Scholarships for Minority Accounting Students**  
New York, NY | (212) 596-6200  
[aicpa.org](http://aicpa.org)

It provides financial assistance to minority students interested in studying accounting at the undergraduate or graduate level.

**Scotts Company Scholars Program**  
[gcsaa.org/education/scholarships](http://gcsaa.org/education/scholarships)

It provides financial assistance and summer work experience to college students, particularly those from diverse backgrounds preparing for a career in golf management.

**Shell Incentive Fund Scholarships**  
[shell.us](http://shell.us)

It provides financial assistance to minority students majoring in specified engineering (chemical, civil, electrical, geological, geophysical, mechanical or petroleum) and geoscience fields (geology, geophysics or physics) at designated universities.

**Society of Women Engineers**  
Chicago, IL | (312) 596-5223  
[swe.org/scholarships](http://swe.org/scholarships)

It provides international scholarships to female undergraduate and graduate students enrolled in a baccalaureate or graduate ABET/CSAB-accredited engineering, computer science degree program or computer science program at an ABET-approved school.

**Surety and Fidelity Industry Intern and Scholarship Program**

[www.thesuretyfoundation.org](http://www.thesuretyfoundation.org)  
It provides financial assistance to Native American and minority undergraduates working on insurance-related degrees.

**Maine Better Transportation Association**  
(207) 622-0526

<https://mbtaonline.org>  
It provides financial assistance to Native American and minority undergraduate and graduate students working on a transportation-related degree.



## General Scholarship Opportunities

**Aircraft Electronics Association**

Lee's Summit, MO  
(816) 347-8400  
<https://aea.net>  
It provides scholarships, training and career resources to students seeking careers in the aircraft electronics and aviation maintenance industry.

**AmeriCorps Programs in Community Service**  
Washington, D.C. | (202) 606-5000  
<https://americorps.gov>

It provides full-time educational awards in return for work in community service by the Corporation for National & Community Service; see the website.

**Automotive Hall of Fame**  
Dearborn, MI | (313) 240-4000  
[www.automotivehalloffame.org](http://www.automotivehalloffame.org)  
It provides scholarships to students interested in an automotive career and enrolled full-time at an accredited college, university or trade school with a minimum 3.0 GPA.

**Bill Countryman Scholarship Program**  
Anchorage, AK  
[www.cul.org/scholarship](http://www.cul.org/scholarship)  
Credit Union 1 proudly offers the Bill Countryman Scholarship program to qualified Alaska applicants yearly.

**California Association of Realtors Foundation**  
Los Angeles, CA | (213) 739-8200  
[car.org/difference/scholarships](http://car.org/difference/scholarships)  
It provides scholarships to California resident graduates and undergraduates attending a California college or university pursuing a degree in a field related to real estate.

**California Student Aid Commission**  
Rancho Cordova, CA  
(888) 224-7268

[www.csac.ca.gov/students](http://www.csac.ca.gov/students)  
[studentsupport@csac.ca.gov](mailto:studentsupport@csac.ca.gov)  
The Assumption Program of Loans for Education is a loan forgiveness program available to college juniors and seniors majoring in education.

**Colgate Professional**  
New York, NY | (800) 266-5428  
[colgateprofessional.com](http://colgateprofessional.com)  
It provides scholarships to students enrolled in dental programs. Visit the Colgate website for a list of available awards and criteria.

**Elks National Foundation**  
Chicago, IL | (773) 755-4728  
[www.elks.org/scholars](http://www.elks.org/scholars)  
[scholarship@elks.org](mailto:scholarship@elks.org)  
It provides scholarship programs for undergraduate study, emergency educational grants and medical school. Legacy awards are for children or grandchildren of members. Medical school scholarships are available to high school seniors, first-year college students and sophomores toward accredited college or university tuition and fees. The Most Valuable Student four-year scholarships are for up to 500 high school students each year, up to \$50,000.



### **Hispanic Scholarship Fund**

Gardena, CA | (310) 975-3700  
www.hsf.net

It provides awards to Latino students attending an accredited four-year not-for-profit university or graduate school. It requires a 3.0 GPA for high school students and a 2.5 GPA requirement for current university students.

### **Institute of International Education**

www.iie.org/gilman

It awards U.S. undergraduate students to study abroad for up to one year and at least four weeks.

Applicants must apply to or have acceptance into a study abroad program eligible for credit at the home institution. In addition, a limited number of Critical Need Language Supplements are available for students studying a critical need language (eligible languages listed on the website).

### **Jack Kent Cooke Foundation Scholarship**

Lansdowne, VA | (703) 723-8000  
www.jkcf.org

It provides funding for students with at least a 3.5 GPA who plan to transfer from a community college to finish their bachelor's degree at a top four-year college in the United States.

### **Lincoln Community Foundation**

Lincoln, NE | (402) 474-2345

lcf.org/impacting-community/student-scholarships  
It administers scholarships with varying criteria for eligibility, available to students living in and outside Lincoln, Nebraska.

### **Mat-Su Health Foundation**

Wasilla, AK | (907) 352-2863  
www.healthymatsu.org

Mat-Su Health Foundation awards scholarships and grants to residents of the Mat-Su Borough pursuing a health-related career.

### **Mensa Education and Research Foundation**

Arlington, TX | (817) 607-5577  
www.mensafoundation.org  
info@mensafoundation.org

It awards scholarships based on applicant essays. Award amount varies.

Additional opportunities are available to MENSA members, but membership is not required to apply. No minimum GPA.

### **National Urban League**

New York, NY | (212) 558-5300  
https://nul.org/education

It offers college scholarships to African American youth to attend post-secondary education institutions.

### **Navy League Scholarships**

navyleague.org

It offers scholarships to military personnel and their dependents. There are several scholarships with varying amounts and requirements. Check the website for details.

### **National Defense Transportation Association**

Alexandria, VA | (703) 751-5011  
ndtahq.com/about-us/education

It provides scholarships to undergraduates pursuing a degree in transportation, business, logistics or distribution. Applicant must be an NDTA member or child of a member.

### **National Society of Professional Engineers**

Alexandria, VA | (703) 684-2800  
www.nspe.org

NSPE administers scholarship programs for engineers in all disciplines. Students attending ABET-accredited schools and female students are eligible for additional opportunities. High school seniors, undergraduates, and graduate students may apply.

### **National Space Club**

Washington, D.C.  
(202) 574-0060

www.spaceclub.org  
It provides scholarships to U.S. citizens in their junior year or higher at an accredited university and pursuing undergraduate or graduate studies in science or engineering.

### **Oncology Nursing Society Foundation**

Pittsburgh, PA | (866) 257-4667  
www.onsfoundation.org

It provides scholarship and research grants to nurses and nursing students devoted to oncology nursing and caring for individuals with cancer.

### **Phi Delta Kappa International**

(812) 339-1156 | educatorsrising.org  
It provides scholarships, fellowships and other awards to members of Phi Delta Kappa as future educators and education graduate students.

### **PHCC Educational Foundation**

Falls Church, VA  
www.phccfoundation.org

It provides scholarships to apprentice and trade (vocational) students in plumbing or HVAC programs and college students pursuing an industry-related degree.

### **Presbyterian Church USA**

Louisville, KY  
www.presbyterianmission.org  
It provides scholarships to students enrolled in a participating college related to the Presbyterian Church.

### **Public Policy and International Affairs Program**

Washington, D.C.  
www.ppiaprogram.org  
PPIA Fellowship & Junior Summer Institute educational developmental programs span from the end of a student's junior year in college to completing a master's degree in public policy, public administration or international affairs. The program provides full tuition to attend PPIA Junior Summer Institute, plus a stipend and financial assistance toward graduate school tuition.

### **Public Relations Student Society of America**

New York, NY | (212) 460-1474  
www.prssa.org

It provides scholarships to undergraduate students enrolled at a four-year accredited institution pursuing a public relations, journalism or communications major and demonstrating interest in a public relations career.

### **Radio Television Digital News Foundation Scholarships**

Washington, D.C.  
(202) 223-4007 | www.rtdna.org

It provides several named scholarships to undergraduate and graduate students attending a university or college working toward a career in broadcast and electronic journalism. Must be sophomore standing or higher.

### Shape America Scholarships

Reston, VA | (800) 213-7193

[www.shapeamerica.org/scholarship](http://www.shapeamerica.org/scholarship)  
It provides scholarships to students majoring in health, physical education, recreation and dance.

### SMART Scholarship Program

[www.smartscholarship.org](http://www.smartscholarship.org)

It provides a scholarship-for-service opportunity for higher education students pursuing STEM degrees. Funded by the Dept. of Defense and includes employment with the DOD.

### Sociologists for Women in Society Scholarships

<https://socwomen.org/awards>

It promotes research, teaching and writings on topics relating to feminism and women. Scholarships focus on specialty areas, and all have varying criteria.

### SPIE Scholarships in Optics and Photonics

Bellingham, WA

(360) 676-3290

It provides education and travel scholarships to student members of SPIE enrolled in optics, photonics, imaging or optoelectronics programs or related disciplines (e.g., physics) at an accredited school. High school students are eligible to receive a one-time, one-year complimentary membership.

### The Tailhook Association

San Diego, CA | (858) 689-9223

[www.tailhook.net](http://www.tailhook.net)

It provides scholarships to high school graduates enrolled in an accredited college or university who are a natural, step or adopted descendant of a Naval or Marine Corps aviator, flight officer or air crewmember, officer or enlisted individual

### TELACU

Los Angeles, CA | (323) 721-1655

[www.telacu.com](http://www.telacu.com)

It offers combined financial assistance with educational programs. It provides skill-building seminars, counseling, peer mentoring, leadership development activities, internships and mentoring to equip and prepare TELACU scholars for their careers. It supports scholars in California, Illinois, Texas and New York.

### The Alaska Community Foundation

Anchorage, AK | (907) 334-6700

<https://alaskacf.org/scholarships>

It administers scholarship and grant programs for high school, college, and graduate-level students. Each program has individual criteria, deadlines and requirements, including support for aviation, engineering, history, hospitality, music, nursing, science and technology.

### University of California Davis School of Veterinary Medicine

Davis, CA (530) 752-1360

[www.vetmed.ucdavis.edu](http://www.vetmed.ucdavis.edu)

It provides scholarships to students who have completed one year of college in sciences and are interested in veterinary medicine.

## High School Programs and Scholarship Opportunities

*Many scholarships and colleges will ask about community involvement. So, you may want to find opportunities for connecting with one's community and culture; check out the tribal, nonprofit and educational organizations where you live to learn more.*

### SCHOLARSHIPS FOR SENIORS

#### Alaska Community Foundation

Anchorage, AK | (907) 334-6700 [www.alaskacf.org](http://www.alaskacf.org)

It provides scholarships for graduating high school seniors, including the following opportunities. Deadlines vary.

- *Specific High School Scholarships:* Provides awards toward educational expenses for graduating high school students from these Alaska high schools:
- *Nordic Skiing Association of Anchorage:* It provides awards toward educational expenses at a college or university to Alaska residents who are high school seniors or enrolled college students. Applicants must be members of the high school cross-country ski team during their junior and senior years. In addition, they must have individual or family memberships in the NSAA.

#### Alaska Performance Scholarship Program

Anchorage, AK | (907) 465-2962

[www.acpe.alaska.gov/financial-aid](http://www.acpe.alaska.gov/financial-aid) [ACPE@alaska.gov](mailto:ACPE@alaska.gov)

It provides scholarships to Alaska residents who graduate from an Alaska high school on or after Jan. 1, 2013, and meet requirements. High school graduates include public and private school graduates and homeschool students who have taken the required courses. Students with a GED are not eligible. Apply by completing the Free Application for Federal Student Aid by June 30. Check the website for potential date changes.

#### Coca-Cola Scholars Program

Atlanta, GA | (800) 306-2653 | [www.coca-colascholars.org](http://www.coca-colascholars.org)

It provides scholarships to high school seniors in the U.S. planning to pursue a degree at an accredited U.S. post-secondary institution with a minimum 3.0 GPA. Applicants must not be children or grandchildren of employees, officers, or owners of Coca-Cola companies. Deadline: October 31.

#### ELKS Foundation- Most Valuable Student

[www.elks.org/enf/scholars/mvs.cfm](http://www.elks.org/enf/scholars/mvs.cfm)

Applicants must be current high school seniors, and evaluation will include scholarship, leadership, and financial need.

**Have It Your Way Foundation, Inc**

Miami, FL | (507) 931-1682  
[www.burgerkingscholarship.com](http://www.burgerkingscholarship.com)  
 It provides a one-time scholarship award. An eligible applicant will be a high school senior enrolling full-time in the fall term of the scholarship year, employed part-time for 10+ hours per week, demonstrating financial need and participating in community service and extracurriculars. Minimum 2.5 GPA.

**Jackie Robinson Foundation**

New York, NY | (212) 290-8600  
[www.jackierobinson.org](http://www.jackierobinson.org)  
 The Minority Scholarship program provides scholarships to high school seniors entering an accredited college or university as a freshman.

**National Merit Scholarship Corporation**

Evanston, IL | (847) 866-5100  
[www.nationalmerit.org](http://www.nationalmerit.org)  
 It is available to United States citizens enrolled in high school. Award selections use information supplied by the student on the PSAT/NMSQT answer sheet.

**Native Forward Scholars Fund**

Albuquerque, NM | (505) 881-4584  
 NFSF provides scholarships to American Indian and Alaska Native high school seniors as part of the All Native American High School Academic Team. Must be a member or descendant of a federally recognized tribe.

**Ron Brown Scholar Program**

Charlottesville, VA | (434) 964-1588  
[www.ronbrown.org](http://www.ronbrown.org)  
[info@ronbrown.org](mailto:info@ronbrown.org)  
 It provides scholarships to African-American seniors seeking acceptance in a four-year accredited college or university in any academic discipline.

**HIGH SCHOOL STUDENT PROGRAMS****ANSEP University of Alaska Anchorage Summer Bridge**

Anchorage, AK | (907) 786-1860  
[www.ansep.net](http://www.ansep.net)  
 The Summer Bridge program is available to high school graduates interested in engineering and science who will attend UAA in the fall. Participants live on campus for 9 weeks before their 1st year at UAA.

**Bank of America Student Leaders**

[about.bankofamerica.com](http://about.bankofamerica.com)  
 An eight-week paid internship at a local nonprofit/charitable organization, including one-week attendance at a Student Leadership Summit in Washington, D.C., with all expenses paid for high school juniors and seniors.

**College Horizons**

Pena Blanca, NM | (505) 401-3854  
[www.collegehorizons.org](http://www.collegehorizons.org)  
 College Horizons is a five-day pre-college workshop for Alaska Native and Native American high school sophomores and juniors.

**Doyon Foundation Advanced College Credit**

Fairbanks, AK | (907) 459-2048  
[www.doyonfoundation.com](http://www.doyonfoundation.com)  
[foundation@doyon.com](mailto:foundation@doyon.com)  
 Advanced College Credit Scholarship provides scholarships to Doyon, Limited enrollees and their descendants. They are available to high school students enrolled in college courses not paid for by their school district. Students may apply year-round for funding.

**The Junior Statesman Foundation**

Burlingame, CA | [www.jsa.org](http://www.jsa.org)  
 Summer School Program provides students the opportunity to meet and question headline figures from government and politics, such as the president, cabinet, house and senate leaders, justices of the Supreme Court, journalists and members of the diplomatic corps. High school students graduating after summer school are eligible to apply.

**Mt. Edgecumbe Hospital**

Sitka, AK | (907) 966-2411  
<https://searhc.org>  
 The High School Student Health Occupations Program provides a one-week travel stipend in Sitka for Alaska Native high school students to experience healthcare careers. Students shadow doctors, dentists, nurses, x-ray technicians and other health professionals.

**Patty Iron Cloud Native American Youth Initiative**

Oklahoma City, OK  
 (405) 946-7072  
[www.aaip.org](http://www.aaip.org)  
 It is an intense academic enrichment and reinforcement program designed to prepare American Indian and Alaska Native high school students to remain in the educational pipeline and pursue a career in the health professions or biomedical research. AAIP Native students and counselors attend the summer program held in Washington, D.C. Scholarship pays for lodging, most meals, and travel expenses.

**QuestBridge**

Palo Alto, CA  
 (650) 331-3280  
[www.questbridge.org](http://www.questbridge.org)  
 College Prep Scholarship provides awards to high school juniors with a solid academic record to equip students with the knowledge needed for individualized college admissions counseling, invitations to QuestBridge College Admissions Conferences at Stanford and Yale and all-expense-paid visits to top college campuses.

**Rural Alaska**

**Honors Institute**  
 Fairbanks, AK | (907) 474-5876  
[www.uaf.edu/rahi](http://www.uaf.edu/rahi)  
[uaf-rahi@alaska.edu](mailto:uaf-rahi@alaska.edu)  
 This six-week summer program is for college life immersion with college-bound high school juniors and seniors from rural Alaska earning up to 11 credits and staying on campus.

**Summer Business Institute – Seattle University**

[seattleu.edu](http://seattleu.edu)  
 The Albers Summer Business Institute offers high school juniors the opportunity to explore university life. Learning the ropes first-hand with classes taught by professors.

**The Ciri Foundation Jump Start Award**

Anchorage, AK | (907) 793-3575 | [www.thecirifoundation.org](http://www.thecirifoundation.org)  
 The award is for direct descendants of Ciri original shareholders who are high school students enrolled or accepted into Running Start college, training programs, or similar authorized educational offerings with concurrent high school and college credits. Students must have a 2.0-term GPA or higher.

## Graduate Scholarship and Fellowship Opportunities

Though this section focuses on graduate students, many scholarships, grants, fellowships and internship resources are available to graduate and undergraduate students. Check with the funding organization for more information.

### ALASKA NATIVE AND NATIVE AMERICAN PROGRAMS

#### Accenture Graduate Fellowships

[www.accenture.com](http://www.accenture.com)  
It provides financial assistance to Native American students interested in working on a graduate or professional degree in engineering, high technology or business.

#### American Indian College Fund

[www.collegefund.org](http://www.collegefund.org)  
It provides financial assistance to Native American students working on a graduate degree in any field. Deadlines, eligibility and awards vary.

#### American Indian Library Association Scholarship

[ailanet.org/awards/scholarships](http://ailanet.org/awards/scholarships)  
It provides financial assistance to American Indians interested in working on a master's degree in library or information science.

#### American Library Association

Chicago, IL | (312) 944-6780  
[www.ala.org](http://www.ala.org)  
ALA provides scholarships to graduate students enrolled in library and information studies from an ALA-accredited program. Or for a master's degree in a school library media program that meets the ALA curriculum guidelines for a National Council for Accreditation of Teacher Education accredited unit.

#### American Partnership with Native Americans

Addison, TX  
[www.nativepartnership.org](http://www.nativepartnership.org)  
PWNA provides scholarships to undergraduate and graduate Native American students. The focus is on applicants who are most often in the middle range of the academic ranking but have the drive and ability to overcome obstacles.

#### Association on American Indian Affairs

Rockville, MD | (240) 314-7155  
[www.indian-affairs.org](http://www.indian-affairs.org)  
It offers scholarships to Native American graduate students.

The requirements of each scholarship may be different. Applicants must be members of federally recognized tribes and have at least one-quarter Indian blood unless otherwise stated.

#### Dartmouth Native American Programs

<https://students.dartmouth.edu>  
In addition to Native American programming at the undergraduate level, Dartmouth provides graduate support for Native American and underserved minority students.

#### Graduate Horizons

Pena Blanca, NM | (505) 401-3854  
[www.graduatehorizons.org](http://www.graduatehorizons.org)  
Graduate Horizons is a four-day crash course for Native American college students, college graduates and master's students preparing for graduate school. Faculty, admissions officers and deans from a host of graduate and professional schools help students: select suitable programs to apply for a given career path; complete applications and write personal statements; become a test-prep "whiz kid" on the GRE, GMAT, LSAT and MCAT; navigate the financial aid/scholarship process; explore special issues for Native students; learn graduate school survival tips.

#### John F. Kennedy School of Government Native American Public Service Fellowship

Cambridge, MA | (617) 495-1100  
[www.ksg.harvard.edu](http://www.ksg.harvard.edu)  
The award is for individuals who demonstrate commitment to matters of concern to Native American tribes, including tribal self-governance and policy. The fellowship includes full tuition and a possible stipend. In addition, the recipient must work in public service benefiting Native Americans for at least three after completing the KSG degree.

#### Harriet Evelyn Wallace Scholarship for Female Graduate Geoscience Students

[www.americangeosciences.org](http://www.americangeosciences.org)  
This program is available for female students pursuing a Master's or

Doctoral degree at an accredited institution of higher education in a recognized geoscience program.

#### Newberry Research Library

Chicago, IL | (312) 255-3666  
[www.newberry.org](http://www.newberry.org)  
Opportunities are available for postdoctoral scholars, Ph.D. candidates, and graduate students. Both short-term (1- to 2-month) and long-term (4- to 12-month) fellowships are available. Preference goes to those who have yet to hold a fellowship in the past three years.

#### Pathway to Science Scholarship Programs

[www.pathwaytoscience.org](http://www.pathwaytoscience.org)  
It provides financial assistance to Native American students interested in working on a graduate degree in science and health-based disciplines from dozens of fields of study.

#### School for Advanced Research

Santa Fe, NM | (505) 954-7200  
[www.sarweb.org](http://www.sarweb.org) | [info@sarsf.org](mailto:info@sarsf.org)  
It offers two residential fellowship programs for scholars. Resident Scholars awards six- and nine-month fellowships to scholars who have completed research and analysis in the social sciences, humanities and Native arts and need time to reflect, debate and write. Summer Scholars awards two-month fellowships to scholars in the social sciences, humanities and Native arts to pursue research or writing projects.

#### Tribal Member Fellowship-UC, San Diego

[grad.ucsd.edu](http://grad.ucsd.edu)  
Under the Tribal Membership Initiative, the University of California San Diego's Office of Graduate Studies is increasing diversity by providing fellowships to incoming graduate students of Native American, Alaska Native and Native Hawaiian ancestry in master's or Ph.D. programs.

### **Washington American Indian Endowed Scholarship**

[readysetgrad.wa.gov](http://readysetgrad.wa.gov)

It provides financial assistance to American Indian graduate students in Washington. Selection is from academic merit, financial need and documented commitment to return service to the state's American Indian community.

## **MINORITY PROGRAMS**

### **Acoustical Society of America Minority Fellowship**

[www.acousticalsociety.org](http://www.acousticalsociety.org)

It provides financial assistance to Native Americans and underrepresented minorities working on a graduate degree in acoustics.

### **American Institute of Certified Public Accountants**

New York, NY | (212) 596-6200

[www.aicpa.org](http://www.aicpa.org) [academics@aicpa.org](mailto:academics@aicpa.org)

It provides scholarship programs for students enrolled full-time as an undergraduate or graduate in an accounting program at an accredited four-year institution.

### **American Speech-Language-Hearing Foundation Scholarship for Minority Students**

[www.ashfoundation.org](http://www.ashfoundation.org)

It provides financial assistance to graduate students in communication sciences and disorders programs.

### **ACLS Dissertation Completion Fellowships**

[www.acls.org/programs/DCF](http://www.acls.org/programs/DCF)

It provides research funding to doctoral candidates and fellowship opportunities to graduate students (especially Native Americans, minorities and women) ready to complete doctoral dissertations in humanities and humanities-related social sciences.

### **American Musicological Society Fellowship**

[www.amsmusicology.org](http://www.amsmusicology.org)

The American Musicological Society provides financial assistance to minority students working on a doctoral degree in musicology with no restrictions on the area of research.

### **American Planning Association**

[www.planning.org/scholarships/apa](http://www.planning.org/scholarships/apa)

It provides financial assistance to Native Americans and other underrepresented students enrolled in graduate degree programs at planning schools.

### **ASA Minority Fellowship Program**

[www.asanet.org/funding/mfp.cfm](http://www.asanet.org/funding/mfp.cfm)

It provides financial assistance to underrepresented minority doctoral students in sociology. Funded by the American Sociological Association. Deadline: Jan. 31.

### **Consortium for Graduate Study in Management**

[www.cgsm.org](http://www.cgsm.org)

It provides financial assistance, fellowships, and work experience to underrepresented minority students preparing for a management career in business.

### **Consuelo W. Gosnell Memorial Scholarships**

[www.naswfoundation.org/gosnell.asp](http://www.naswfoundation.org/gosnell.asp)

It provides financial assistance to Native American and Hispanic students interested in working on a master's degree in social work.

### **Eisenhower Graduate Transportation Fellowship**

[www.fhwa.dot.gov/ugp/index](http://www.fhwa.dot.gov/ugp/index)

It provides financial assistance to Native American and graduate students working on a master's or doctoral degree in transportation-related fields.

### **Francis M. Keville Memorial Scholarship**

[www.bsces.org/recognition/students](http://www.bsces.org/recognition/students)

It provides financial assistance to minority and female graduate students working on construction management degrees.

### **GEM MS & Ph.D. Fellowship Programs**

[www.gemfellowship.org](http://www.gemfellowship.org)

It provides financial assistance and summer work experience to minority students interested in obtaining a master's or Ph.D. degree in science, math and computer-related fields.

### **Holly A. Cornell Scholarship**

[awwa.org](http://awwa.org)

It provides financial assistance to students in water supply and treatment.

### **HUD Doctoral Dissertation Research Grant Program**

[www.hud.gov](http://www.hud.gov)

It provides funding to minority and other doctoral candidates interested in conducting dissertation research related to housing and urban development issues.

### **IBM Ph.D. Fellowship Program**

[research.ibm.com](http://research.ibm.com)

It provides funding and work experience to minority and other students working on a Ph.D. in a research area of interest to IBM.

### **Industry/Government Graduate Fellowships**

[ametsoc.org](http://ametsoc.org)

It is provided to encourage Native Americans and underrepresented students entering the first year of graduate school to work on an advanced degree in the atmospheric and related oceanic and hydrologic sciences.

### **Isaac J. "Ike" Crumby Minorities in Energy Grant**

[foundation.aapg.org/list-of-grants-in-aid-grants](http://foundation.aapg.org/list-of-grants-in-aid-grants)

It provides financial assistance to Native Americans, minorities and female students interested in conducting research related to earth science aspects of the petroleum industry.

### **Launching Leaders MBA Scholarship**

[www.jpmmorgan.com](http://www.jpmmorgan.com)

It provides financial assistance and work experience to Native American and underrepresented minority students enrolled in an MBA program.

### **Marriage & Family Therapy Master's Student Scholarship**

[www.aamft.org](http://www.aamft.org)

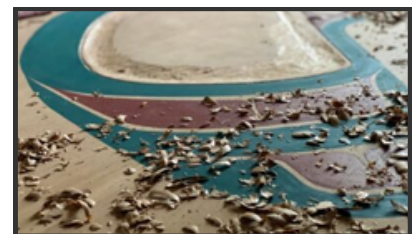
It provides financial assistance to Native American and minority students enrolled in a master's or post-degree training program in marriage and family therapy.

### **Mihaylo College of Business and Economics**

Fullerton, CA | (657) 278-4652  
(800) 433-3243

[www.business.fullerton.edu](http://www.business.fullerton.edu)

It provides awards to full-time graduate students at California State University, Fullerton. Available to residents of California. GPA requirements, other eligibility details and deadlines vary.



### **National Science Foundation Graduate Research**

<https://beta.nsf.gov>

It provides financial assistance to minority graduate students interested in working on a master's or doctoral degree in fields supported by the National Science Foundation.

### **Patrick D McJulien Minority Graduate Scholarship**

[www.aect.org](http://www.aect.org)

It provides financial assistance to Native American and minority members of the Association for Educational Communications and Technology working on a graduate degree in educational communications and technology.

### **PFATS-NFL Charities Minority Scholarships**

[www.pfats.com](http://www.pfats.com)

It provides financial assistance to Native American and minority students working on a degree in athletic training.

### **Porter Physiology Development Awards**

[www.the-aps.org](http://www.the-aps.org)

It provides research funding to Native Americans and minorities who are members of the American Physiological Society interested in working on a doctoral degree in physiology.

### **Ralph W. Shrader Diversity Scholarships**

[www.afcea.org](http://www.afcea.org)

It provides financial assistance to Native Americans and other master's degree students in fields related to communications and electronics.

### **Sandia Master's Fellowship Program**

[www.sandia.gov](http://www.sandia.gov)

It aims to enable minority students to obtain a master's degree in engineering or computer science and work at Sandia National Laboratories. Participants receive a competitive salary while working at the laboratories full-time and a stipend while attending school. Must be prepared to obtain a master's degree in one year.

### **Smithsonian Fellowship Opportunities**

[www.smithsonianofi.com](http://www.smithsonianofi.com)

It provides funding to Native American and minority graduate students interested in conducting research at the Smithsonian Institution.

### **Society for the Study of Social Problems Racial/Ethnic Minority Graduate Scholarship**

[www.ssspl.org](http://www.ssspl.org)

It provides funding to minority members of the Society for the Study of Social Problems interested in conducting research for their doctoral dissertations.

### **Society of American Archivists Mosaic Scholarship**

[www2.archivists.org](http://www2.archivists.org)

It provides financial assistance to Native Americans and other minority students working on a graduate degree in archival science.

### **Southcentral Foundation**

(907) 729-8541

[Scfnuka.com/learning-program](http://Scfnuka.com/learning-program)

[SCFAcademicPrograms@southcentralfoundation.com](mailto:SCFAcademicPrograms@southcentralfoundation.com)

Nuka Internship/Fellowship Experience is a paid 11-month improvement internship (AN/Al college graduates) or fellowship (AN/Al graduate students) within SCF's Nuka System of Care which utilizes a relationship-based, customer-owned approach to transforming health care. It provides an opportunity to participate in the redesign of systems and processes to improve overall effectiveness. The goal is to provide a robust experiential learning experience through work alongside improvement teams and integrated care teams on improvement projects in rural and urban health care settings. Position is on-site in Anchorage, AK from June to May.

### **SREB Doctoral Awards**

[www.sreb.org/types-awards](http://www.sreb.org/types-awards)

It provides financial assistance to Native American and minority students to work on a doctorate in the STEM fields of science, technology, engineering or mathematics at designated universities in the southern states.

### **Wake Forest University Fellowship**

[www.business.wfu.edu](http://www.business.wfu.edu)

It is a free Master's Program at Wake Forest for minority students through the Corporate Fellowship Award. Fellows receive full tuition plus living expenses, personal mentoring from a high-level executive at a major corporation

and a Fellowship Practicum. It is limited to U.S. citizens. Applicant must hold or pursue a bachelor's degree from an accredited college or university majoring in the liberal arts, sciences, or engineering. Business minors are eligible to apply.

### **Wy'east Medicine Post-baccalaureate Pathway**

[www.nnacoe.org/wyeast-pathway](http://www.nnacoe.org/wyeast-pathway)

[wyeast@ohsu.edu](mailto:wyeast@ohsu.edu)

Wy'east Medicine is a tuition-free post-baccalaureate health education Pathway for American Indian and Alaska Native learners who are passionate about becoming physicians. Scholars train at OHSU in Portland, OR and earn conditional acceptance to medical school upon successful completion of Wy'east.

## **OPEN TO ALL GRADUATE STUDENTS**

### **Academy Foundation Student Scholarships**

[www.eatrightfoundation.org](http://www.eatrightfoundation.org)

It provides financial assistance to Native Americans and other graduate student members of the Academy of Nutrition and Dietetics.

### **American Council of Learned Societies**

[acls.org/programs/comps](http://acls.org/programs/comps)

The American Council of Learned Societies provides various funding opportunities and grants for doctoral candidates interested in conducting dissertation research in the social sciences and humanities. Some funding is dependent on Federal Title VIII appropriations.

### **American Institute of Physics**

[aip.org/aip/awards](http://aip.org/aip/awards)

It honors outstanding achievements in physics and raises public awareness of the contributions that physicists make to society. In addition to its awards program, AIP supports the profession with government fellowships, graduate scholarships and teaching awards.

### **Conference of Minority Transportation Officials**

[www.comtonational.org](http://www.comtonational.org)

A variety of scholarships are available to graduate students with a career interest in transportation and related fields (e.g., engineering).

**Dr. Nancy Foster  
Scholarship Program**

[www.fosterscholars.noaa.gov](http://www.fosterscholars.noaa.gov)  
It provides financial assistance to graduate students, especially Native Americans, minorities and women, interested in working on a degree in fields related to marine sciences.

**Intel Scholarship**

[www.intel.com](http://www.intel.com)  
It provides financial assistance to members of the American Indian Science and Engineering Society working on an undergraduate or graduate degree in a field of computer science or engineering. It offers mentorship to increase diversity in these fields.

**National Political  
Science Scholarships**

[www.apsanet.org](http://www.apsanet.org)  
Scholarships for graduate study are for members entering graduate school in political science in the upcoming academic year. Nominations must come from the chapter advisors, accompanied by an official application and supporting documents as specified in the program announcement.

**National Science  
Foundation Funding Programs**

[www.nsf.gov](http://www.nsf.gov)  
It provides information on programs (scholarships, fellowships, research fellowships) providing either direct (i.e., from NSF) or indirect (i.e., from an awardee institution) funding for students at the graduate level.

**Phillips Fund Grants for Native  
American Research**

[www.amphilsoc.org/grants/phillips](http://www.amphilsoc.org/grants/phillips)  
It provides funding to graduate students and scholars interested in researching North American Indian anthropological linguistics and ethnohistory.

**LEGAL**

**Arent Fox  
Diversity Scholarships**

[www.arentfox.com](http://www.arentfox.com)  
It provides financial assistance and work experience to minority law students.

**Baker Donelson  
Diversity Scholarships**

[www.bakerdonelson.com](http://www.bakerdonelson.com)  
It provides financial assistance to law students who are members of

groups underrepresented at large law firms. See the website for the deadline.

**Balfour Phi Delta Phi  
Minority Scholarship Program**

[phideltaphi.org](http://phideltaphi.org)  
It assists minority students who are members of Phi Delta Phi International Legal Fraternity.

**Buckfire & Buckfire, Law School  
Diversity Scholarship**

[www.buckfirelaw.com](http://www.buckfirelaw.com)  
This scholarship award goes to a minority student attending an accredited law school.

**Crowell & Moring Diversity in Legal  
Profession Scholarship**

[www.crowell.com](http://www.crowell.com)  
It assists members of racial and ethnic groups from any state who are underrepresented in the legal profession and attending law school in the District of Columbia.

**Dinsmore & Shohl LLP  
Diversity Scholarship**

[www.dinsmore.com](http://www.dinsmore.com)  
It provides financial assistance and summer work experience to law students from groups traditionally underrepresented in the legal profession.

**Donald W. Banner  
Diversity Scholarship**

[bannerwitcoff.com/diversity-inclusion](http://bannerwitcoff.com/diversity-inclusion)  
It provides financial assistance to law students from historically underrepresented groups in intellectual property law.

**Dorsey & Whitney  
Diversity Fellowships**

[www.dorsey.com/diversity](http://www.dorsey.com/diversity)  
It provides financial assistance for law school students from diverse backgrounds who are interested in working during the summer at offices of the sponsoring law firm. Deadlines are on a rolling basis.

**DRI Law Student  
Diversity Scholarship**

[dri.org](http://dri.org)  
It provides financial assistance to minority and female second- or third-year law students.

**Finnegan Henderson  
Diversity Scholarship**

[www.finnegan.com](http://www.finnegan.com)  
It provides financial assistance and work experience to underrepresented minority law students interested in a career in intellectual property law.

**Fish & Richardson  
Diversity Fellowship Program**

[www.fr.com/about/diversity](http://www.fr.com/about/diversity)  
It provides financial assistance for law school students who will contribute to diversity in the legal profession.

**Foley & Lardner  
Diversity Scholarship**

[www.foley.com/careers/lawstudents](http://www.foley.com/careers/lawstudents)  
It provides financial assistance and work experience to first-year law students who will contribute to diversity in the legal profession.

**George A Strait Minority  
Scholarship Endowment**

[www.aallnet.org](http://www.aallnet.org)  
It provides financial assistance to minority college seniors or graduates interested in becoming law librarians.

**George V Powell  
Diversity Scholarship**

[lanepowell.com](http://lanepowell.com)  
It provides financial assistance and work experience to law students who will contribute to the diversity of the legal community.

**Goodwin Diversity Fellowship**

[www.goodwinlaw.com](http://www.goodwinlaw.com)  
It provides financial assistance and work experience to minority students interested in public interest law.

**Hillis Clark Martin & Peterson  
Diversity Fellowship**

[www.hcmp.com/diversity-fellowship](http://www.hcmp.com/diversity-fellowship)  
It provides financial assistance to law students with diverse backgrounds and life experiences.

**Indian Legal  
Scholarship Program**

[www.nwiba.org/student-financial-aid](http://www.nwiba.org/student-financial-aid)  
It provides financial assistance to Native Americans from the Northwest interested in attending law school in the area or taking the bar exam.



### **King & Spalding Diversity Fellowship Program**

[www.kslaw.com/pages/law-students](http://www.kslaw.com/pages/law-students)

It provides financial assistance to Native Americans from the Northwest interested in attending law school in the area or taking the bar exam.

### **Kirkland & Ellis LLP Diversity Fellowship Program**

[www.kirkland.com](http://www.kirkland.com)

It provides financial assistance and summer work experience at Kirkland & Ellis to minority law students from any state. See the website for the deadline.

### **K&L Gates Diversity Fellowship**

[www.klgates.com](http://www.klgates.com)

It provides financial assistance and summer work experience in Seattle to law students from any state who come from diverse backgrounds.

### **Latham & Watkins Diversity Scholars Program**

[www.lw.com/MandAScholarsProgram](http://www.lw.com/MandAScholarsProgram)

It provides financial assistance to minority law students interested in working for a global law firm.

### **Lloyd M Johnson Jr Scholarship Program**

[www.mcca.com/career-center](http://www.mcca.com/career-center)

It provides financial assistance to law students who will contribute to diversity in the legal profession.

### **Mexican American Legal Defense Educational Fund**

[maldef.org](http://maldef.org)

It awards scholarships to students based on their commitment to serving the Latino community through law. Applicants must be enrolled full-time in an American-accredited law school.

### **McAndrews Diversity in Patent Law Fellowship**

[www.mcandrews-ip.com](http://www.mcandrews-ip.com)

It provides financial assistance to law students from diverse backgrounds interested in patent law.

### **McDermott Fellowship**

[www.mwe.com/careers/lawstudents](http://www.mwe.com/careers/lawstudents)

It provides financial assistance and work experience to minority law students.

### **Miller Nash Law Student Diversity Fellowship**

[www.millernash.com](http://www.millernash.com)

It provides financial assistance and work experience to law

students who will contribute to the diversity and are interested in living and working in the Pacific Northwest after graduation.

### **NNALSA Summer Internship Scholarship**

[www.nationalnalsa.org](http://www.nationalnalsa.org)

NNALSA and the National Native American Bar Association offer funding opportunities for law students undertaking a summer legal clerkship with a tribe or a nonprofit organization.

### **Richard D Hailey AAJ Law Student Scholarship**

[www.justice.org](http://www.justice.org)

It provides financial assistance for minority student members of the American Association for Justice.

### **Sidley Diversity & Inclusion Scholarship**

[www.sidley.com/en/diversitylanding](http://www.sidley.com/en/diversitylanding)

It provides financial assistance and work experience to law students from diverse backgrounds.

### **Sidney B. Williams Jr. Intellectual Property Law Scholarships**

[aiplef.org](http://aiplef.org)

It provides financial assistance to minority students preparing for a career in intellectual property law.

### **Stoel Rives First-Year Diversity Fellowship**

[stoel.com](http://stoel.com)

It provides financial assistance to law students who bring diversity to the profession and are interested in a summer associate position with Stoel Rives.

### **Thompson Hine Diversity Scholarship**

[thompsonhine.com](http://thompsonhine.com)

It provides financial assistance and work experience to minority law students from any state who are summer associates with the law firm of Thompson Hine.

### **Vinson & Elkins Diversity Fellowships**

[velaw.com](http://velaw.com)

It provides financial assistance to minority law students interested in working in a law firm setting. Open to students entering their second year at an ABA-accredited law school.

### **Washington Diversity Fellowships**

[americanbar.org](http://americanbar.org)

It provides funding to students from underserved groups interested in pursuing law.

### **Winston & Strawn Diversity Scholarship Program**

[winston.com](http://winston.com)

It provides financial assistance to minority law students.

## **MEDICAL, DENTAL AND PUBLIC HEALTH**

### **Aging Research Dissertation Awards to Increase Diversity**

[nia.nih.gov/research/grants-funding](http://nia.nih.gov/research/grants-funding)

It provides financial assistance to underrepresented doctoral candidates to research aging.

### **AMA Foundation Minority Scholars Awards**

[www.ama-ssn.org/about/awards](http://www.ama-ssn.org/about/awards)

It provides financial assistance to Native Americans and underrepresented minorities enrolled in medical school.

### **American Society of Radiologic Technologists**

[foundation.asrt.org](http://foundation.asrt.org)

It provides scholarships to entry-level students and professionals in an accredited radiologic science program.

### **ASCO Medical Student Rotation**

[asco.org](http://asco.org)

It provides funding to minority medical students interested in a clinical research oncology rotation.

### **CDC Minority Internships & Fellowships**

[www.cdc.gov](http://www.cdc.gov)

It provides an opportunity for minority undergraduate through doctoral students to conduct research at Prevention Research Centers funded by the U.S. Office of Minority Health and Health Equity.

### **Elizabeth & Sherman Asche Memorial Scholarship**

[www.indian-affairs.org](http://www.indian-affairs.org)

It provides financial assistance to Native Americans working on a graduate degree in public health.



**IHS Health Professions Scholarship Program**

[www.ihs.gov/scholarship](http://www.ihs.gov/scholarship)  
It funds Native American and Alaska Native students in health professions and allied health professions programs. See the website for eligible programs and find a local IHS support office.

**Institute for Diversity and Health Equity Summer and Fall Enrichment Program**

[www.diversityconnection.org](http://www.diversityconnection.org)  
These programs place diverse graduate students pursuing advanced degrees in healthcare administration or related fields in paid internships within healthcare organizations.

**Jeanne Spurlock Minority Medical Student Fellowships in Psychiatry and Substance Abuse, and Child & Adolescent Psychiatry**

[aacap.org](http://aacap.org)  
It funds minority medical students interested in working with a child and adolescent psychiatrist during the summer or researching substance abuse.

**Josiah Macy Jr. Foundation Scholarship  
Mary Ball Carrera Scholarship**

[www.nmfonline.org](http://www.nmfonline.org)  
They provide financial assistance to Native American and underrepresented minority medical students who demonstrate financial need.

**Mental Health Dissertation Research Grant to Increase Diversity**

[www.nimh.nih.gov/funding](http://www.nimh.nih.gov/funding)  
It provides research funds to Native American doctoral candidates and those from underrepresented groups preparing for a research career in a relevant mental health or mental disorders area.

**MLA/NLA Scholarship for Minority Scholars**

[mlanet.org](http://mlanet.org)  
It provides financial assistance to minority students interested in a career as a medical librarian.

**NASP Minority Scholarship**

[www.nasponline.org](http://www.nasponline.org)  
It provides financial assistance to minority graduate student members of the National Assoc. of School Psychologists enrolled in school psychology program.

**National Academy of Medicine Health Policy Fellowships and Leadership Programs**

[nam.edu](http://nam.edu)  
It provides a variety of programs for students in health and policy-related fields.

**National Medical Fellowships**

[www.nmfonline.org](http://www.nmfonline.org)  
It provides a need-based scholarship program to medical students with demonstrated financial need who are U.S. citizens from groups underrepresented in medical professions, including Alaska Natives, American Indians, African Americans, Hispanic/Latinos, Native Hawaiians and mainland Puerto Rican descent.

**Northwest Portland Area Indian Health Board**

[www.npaihb.org](http://www.npaihb.org)  
NARCH fellowships support American Indian and Alaska Native students pursuing MPH degrees, other master's degrees, Ph.D.s in social and biomedical sciences, MDs and other doctoral-level degrees. Successful candidates will receive monthly stipends to support their studies.

**Pre-doctoral Fellowship in Mental Health and Substance Abuse Services**

[www.apa.org](http://www.apa.org)  
It provides financial assistance to minority doctoral students and those committed to providing mental health and substance abuse services to ethnic minority populations.

**SAMHSA Minority Fellowship and Clinical Research Pre-Doctoral Fellowship Programs**

[www.emfp.org](http://www.emfp.org)  
It provides financial assistance to minority nurse doctoral candidates interested in psychiatric, mental health and substance abuse issues that affect the lives of ethnic minority people.

**Sherry R Arnstein Minority Student Scholarship**

[www.aacom.org](http://www.aacom.org)  
It provides financial assistance to Native Americans and underrepresented minority students in osteopathic medical school.

**Society of Pediatric Psychology Diversity Research Grant**

[www.societyofpediatricpsychology.org](http://www.societyofpediatricpsychology.org)  
It provides funding to minority and other graduate students and post-doctorate members of the Society of Pediatric Psychology interested in researching the diversity aspects of pediatric psychology.

**Transamerica Retirement Solutions- Leaders in Healthcare Scholarship**

[www.diversityconnection.org](http://www.diversityconnection.org)  
It provides awards to ethnically diverse first- and second-year graduate students pursuing degrees in healthcare administration or a comparable degree (MBA, MPH, MHA, MPA, MSN or BSN). Applicants must demonstrate a commitment to community service and academic excellence.

**Underrepresented Minority Dental Student Scholarship**

[www.adafoundation.org](http://www.adafoundation.org)  
It provides financial assistance to Native Americans and underrepresented minorities entering dentistry.

**Watson Midwives of Color Scholarship**

[midwife.org](http://midwife.org)  
It provides financial assistance for midwifery education to Native Americans and other students of color who belong to the American College of Nurse-Midwives.

**William G. Anderson, D.O. Minority Scholarship**

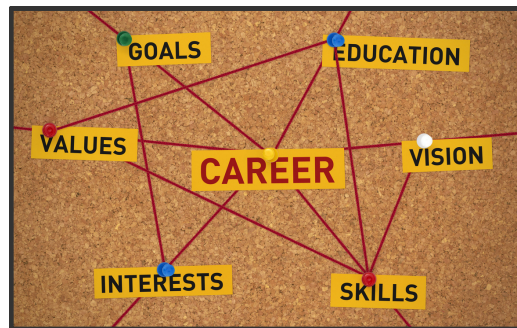
[www.aof.org/grants-awards](http://www.aof.org/grants-awards)  
It provides financial assistance to Native American and minority students enrolled in colleges of osteopathic medicine.



# CAREER TECHNICAL EDUCATION AND VOCATIONAL PATHWAYS

## DID YOU KNOW?

*Jobs in the construction industry pay more than 35% higher than other jobs. The average annual income for a construction worker is \$81,600, plus great benefits.*



## DID YOU KNOW?

80% of contractors report difficulty finding qualified craft workers to hire, as the association calls for measures to rebuild the workforce, according to AGC of America.

Welcome to the dynamic world of Career Technical Education—a pathway designed to empower learners by equipping them with the practical skills, knowledge, and real-world experience needed to flourish in today's and tomorrow's job market. CTE stands at the forefront of preparing individuals for high-demand careers in many industries, from healthcare and information technology to advanced manufacturing and beyond.

At its core, CTE bridges the gap between educational achievements and occupational aspirations, offering students a seamless transition from classroom learning to meaningful employment. By integrating academic excellence with vocational training, CTE programs ensure that students graduate with a profound understanding of their chosen field and the hands-on experience employers value.

Whether you're a high school student pondering your next steps, a college attendee seeking to specialize, or an adult looking for a career change or advancement, CTE offers a flexible, relevant, and efficient route to achieving your goals. Through a blend of classroom instruction, experiential learning, and, often, direct industry engagement, students are prepared to meet the challenges of the workforce head-on.

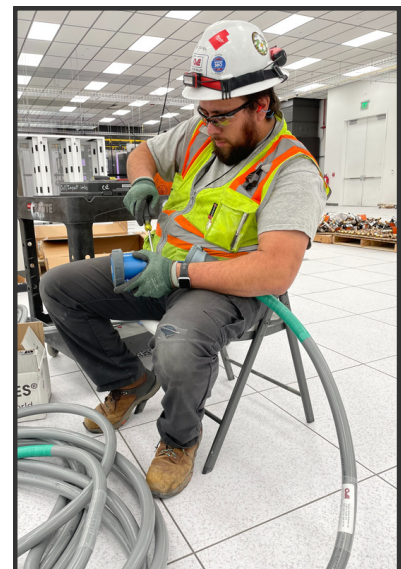
## WEBUILDALASKA.COM'S CONSTRUCTION CAREER PATH RESOURCES

Today's construction industry is not the same industry that your parents and grandparents remember – There are more opportunities in construction than ever before. It's one of the nation's largest employers, it pays well, and you can start earning money immediately. You don't have to attend college or a university to get started. The opportunities are growing each year! Check out the construction career path resources at <https://webuildalaska.com/careers> to find the perfect construction trade for you!



**THE CIRI FOUNDATION**  
**CAREER TECHNICAL**  
**EDUCATION SCHOLARSHIP**

Open to those with a high school diploma or GED and a minimum GPA of 2.0. It is designed for individuals accepted into or currently enrolled in part-time or full-time technical skills certificate or vocational training programs. This program features rolling deadlines that open at the first of the month.



# 2023 Scholarship Spotlight



Harmony Nyitrai's story is a powerful illustration of how scholarships can change lives. Expressing her gratitude, Harmony says, "Thank you, CIRI [Foundation], for helping me with a scholarship while I was in school. It meant a lot to me and my family."

Her experience at Charter College, marked by academic excellence stands as an inspiration for aspiring vocational professionals.



**APPLY  
ONLINE**

*"Cheers to bidding farewell to Top Ramen and happy meals! On a more serious note, hitting a major life milestone—I completed my journey at Charter College. Out of the 22 students on this 10-month adventure, I stand alone in being on time and successfully earning my welding certificate. The smoothest part of my year? Nailing my classes and scoring spots on the Dean's List twice."*

## TCF'S ROLLING DEADLINES FOR CTE

The CIRI Foundation's introduction of rolling deadlines for career technical education scholarships marks a pivotal change in educational support. This flexible approach caters to the varying schedules and needs of students across different vocational fields, ensuring timely and effective financial assistance.

This initiative invites everyone, from students to supporters, to be part of a movement that values practical skills and hands-on learning. TCF is dedicated to being more than just a funding source; it's a partner in nurturing skills and building futures.





## Youth Training Classes

### Learn more about pre-apprenticeship youth training

Alaska Works Partnership is here to help Alaska's Youth get connected with pre-apprenticeship youth training. Apply for training today, and be sure to contact us with any questions that you have.

#### Get Free Hands-On Training:

Attention high school students & graduating seniors - Consider a career in the trades

- Did you know that each year, over 50% of new building trades apprentices have taken classes through AWP?
- Sign up today to continue your pathway toward a high-paying, fulfilling construction career.
- Get free training and learn skills that will help you get excellent jobs with great pay!

#### Anchorage Office & Training Ct.

161 Klewin St., Suites 203, 204 & 207  
Anchorage, Alaska 99508  
(907) 569-4711

#### Fairbanks Office & Training Ct.

3580 Cartwright Court, Fairbanks, Alaska 99709  
(907) 457-2597

#### Mat-Su Office & Training Ct.

619 S Knik Goose Bay Rd, Unit E  
Wasilla, Alaska 99654  
(907) 376-4704

**LEARN MORE AND APPLY:** [WWW.ALASKAWORKS.ORG](http://WWW.ALASKAWORKS.ORG)

#### TRAINING SCHEDULE:

[WWW.ALASKAWORKS.ORG/TRAINING](http://WWW.ALASKAWORKS.ORG/TRAINING)

Alaska Works Partnership can help you connect to training, education, apprenticeship, and careers in Alaska's construction, mining, oil & gas, maritime, and transportation industries. We find motivated applicants, provide the best training, and guide participants toward trade career opportunities. We've helped thousands of Alaskans in over 140 communities get started in construction. Let us help you build your future!

Construction industry employers require hundreds of new workers annually to replace retirees and non-resident workers. This is not limited to construction only, as other industries such as oil & gas, mining, maritime, and seafood processing also face a shortage of skilled trades such as welders, electricians, carpenters, equipment operators, plumbers, and pipefitters, and other trades-people. This high demand presents a unique opportunity to secure a stable and well-paying career.

#### Training

- Carpentry, Framing, and Sheetrock
- Electrical Wiring
- Telecommunications
- Ironwork and Welding
- Plumbing and Pipefitting
- Sheetmetal and HVAC
- Construction Craft Laborers Training
- Heavy Equipment Operating and Mechanics
- Health and Safety

#### Alaska Works Student Success

**Graduate:** *Elsie Nayokpuk, 2023*

**Program:** Carpentry

**Job:** CIHA's Phase II of the Spenard East Development Project with F-E Contracting



At the start of 2023, Elsie came to Alaska Works following her GED completion at Ninestar and an eight-week carpentry training with NIT. Driven by her passion for hands-on work, she sought additional training before entering the construction market.

While at Alaska Works, Elsie completed four carpentry-related classes while working toward getting her driver's license. With guidance from the Alaska Works team, Elsie polished her resume, perfected her interview skills, and applied for her first construction job.

Her dedication paid off in a position with F-E Contracting Inc., a local construction company committed to building affordable housing for Cook Inlet Housing Authority. She's now working on Phase II of the Spenard East Development Project.

Elsie is "enjoying the work so much" as she looks forward to starting as a first-year apprentice with ABC of Alaska. "And it made my life so much better," she said as she is already thriving in a high-paying career.



**CONSTRUCTION TRADE APPRENTICESHIPS**

	Phone Number	AGE	EDUCATION	RESIDENCY	TERM OF APPRENTICE	TRADE RELATED		WAGE INFORMATION				
						Minimum One Year	Approx. Years	Hours	Number Weeks 1st Class	Additional Each Year	Estimated Starting Wage Per Hour	% Journeyman Pay
BOILERMAKERS	253-435-0330	18+	X		4	6,000	3	144 hrs per year	\$33.71	70%	1,000 hrs	\$48.15
BRICKLAYERS	206-788-8333	18+	X	X	4	6,000	8	144 hrs per year	\$24.00	50%	1st: 500 hrs. 2nd: 1,000 hrs. 3rd: 1,500 hrs. 4th: 1,000 hrs.	\$48.00
CARPENTER	Anchorage 344-1541 Fairbanks 452-4626	18+	X		4	7,000	6		\$26.63	60%	875 hrs.	\$44.39
CEMENT MASON / PLASTERER	Anchorage 272-5113 Fairbanks 322-3389	18+	X	X	4	4,000	144 hrs per year		\$26.66	60%	1,000 hrs.	\$44.16
ELECTRICAL LINEMAN *** Outside (Anchorage & Fairbanks)	Anchorage 337-9508 Fairbanks 479-4449	18+	HS/GED + 1 year Algebra 1 (other math options available)		4	8,000	8		\$31.72	50%	1,000 hrs.	\$63.44
ELECTRICAL WIREMAN Inside (Anchorage & Fairbanks)	Anchorage 337-9508 Fairbanks 479-4449	18+	HS/GED + 1 year Algebra 1 (other math options available)		4	8,000	7		\$25.54	55%	1,000 hrs.	\$46.44
TELECOMMUNICATIONS TECHNICIAN *** Outside	Anchorage 337-9508 Fairbanks 479-4449	18+	HS/GED + 1 year Algebra 1 (other math options available)		4	8,000	8		\$25.39	50%	1,000 hrs.	\$50.78
TELECOMMUNICATIONS TECHNICIAN Inside	Anchorage 337-9508 Fairbanks 479-4449	18+	HS/GED + 1 year Algebra 1 (other math options available)		4	8,000	8		\$25.54	55%	1,000 hrs.	\$46.44
LINE CLEARANCE TREE TRIMMER ***	Anchorage 337-9508 Fairbanks 479-4449	18+	HS/GED + 1 year Algebra 1 (other math options available)		2	4,000	N/A		\$20.36	50%	1,000 hrs.	\$40.71
HEAT AND FROST INSULATORS	Statewide out of Washington 206-812-0777	18+	HS/GED or Transcripts	AK Drivers License	4	6,400	144 hrs per year		\$24.81	60%	1,600 hrs.	\$41.35
IRON WORKER ***	563-4766	18+	X	X	4	6,000	204 hrs per year		\$25.79	60%	1,500 hrs.	\$42.99
LABORERS (Alaska Laborers Training School)	Anchorage 345-3853 Fairbanks 452-3146 Juneau 586-2890	18+	X		4	5,100	144 hrs per year		\$25.20	70%	1st: 1,000 hrs. 2nd: 2,500 hrs. 3rd: 4,000 hrs.	\$36.00
OPERATING ENGINEER Operating / Mechanic / Service Oilers	Anchorage 746-1117 Fairbanks 456-5421	18+	X	AK Driver License & Residency by start of program	3 to 5	5,000 - 8,000	10-12 weeks	80 hrs per year	\$29.78 - \$32.26	60-65%	1,000 hrs.	\$49.64
PAINTERS & ALLIED TRADES: Commercial Painter (a) & Industrial Coater (b) Drywall Finisher (c) & Floor Coverers (d) Wages vary for Painters & Tapers in Fairbanks	562-9847	18+	X	AK Driver License	3	6,000	144 hrs per year		\$30.68-a \$31.49-b \$21.43-c \$19.93-d	60% 60% 60% 50%	500 to 1,500 hrs.	\$35.82-b \$35.72-c \$39.85-d
PAINTERS & ALLIED TRADES (Glazier)	562-9847	18+	X	AK Driver License	4	8,000	144 hrs per year		\$23.62	55%	1,000 to 1,500 hrs.	42.95.
PILEDRIVERS & COMMERCIAL DIVERS	344-1541	18+	X		4	5,200	160 hrs per year	4 weeks as required	\$26.63	60%	1,300 hrs.	\$44.39
PLUMBERS and STEAMFITTERS (Anchorage)	562-2890	18+	HS/GED + Workkeys		5	10,000	6		\$20.50	50%	2,000 hrs.	\$41.00
PLUMBERS and PIPEFITTERS (Fairbanks)	456-5989	18+	HS/GED + Workkeys		5	8,000 - 10,000	10 weeks	7-8 weeks	\$26.15	55%	1 year	\$46.86
PLUMBERS AND PIPEFITTERS (Juneau)	586-2874	18+	HS/GED + Workkeys	X	5	10,000	6		\$26.10	60%	1,000 hrs. After 1st 3,000 hrs	\$43.50
SHEET METAL WORKERS (Anchorage)	277-5367	18+	HS/GED + Workkeys	AK Driver License	4	8,000	240 hrs per year		\$23.53	50%	1,000 hrs.	\$47.05
SHEET METAL WORKERS (Fairbanks)	452-3964	18+	HS/GED + Workkeys	X	4	8,000	240 hrs per year		\$25.97	50%	1,000 hrs.	\$51.93
TEAMSTER (Freight Transport Driver)	278-3674	21+	HS/GED + Workkeys	AK Drivers License for 30 Days	2	2,000	7 weeks	144 hrs per year	\$21.60	80%	500 hrs & 1500 hrs	\$28.00 - \$30.00
TEAMSTER (Surveyor Technician)	278-3674	18+	HS/GED + Workkeys	AK Drivers License for 30 Days	4	4,000	2 weeks	144 hrs per year	\$25.00	60%	1,000 hrs.	\$40.00 - \$50.00
TEAMSTER (Logistic Technician)	278-3674	18+	HS/GED + Workkeys	AK Drivers License for 30 Days	2	4,000	144 hrs per year		\$32.64	80%	3,000 hrs	\$40.80
TEAMSTER (Construction Driver)	278-3674	18+	HS/GED + Workkeys	AK Drivers License for 30 Days	3	4,000	8 weeks	144 hrs per year	\$25.00 - \$33.00	60%	1,000 hrs.	\$40.00 - \$50.00

# ALASKA VOCATIONAL TECHNICAL CENTER

AVTEC is an excellent place for Alaskans from across the state to gain key employability and technical skills and start a career in less than a year.

## ALASKA VOCATIONAL TECHNICAL CENTER

809 Second Ave., Seward, AK 99664  
(907) 224-3322 | avtec.edu

AVTEC is a vocational training center operated by the State of Alaska as a Division of the Department of Labor and Workforce Development.

### Training & Programs

- Alaska Maritime Training Center
- Business and Office Technology
- Construction Technology
- Culinary Arts
- Diesel/Heavy Equipment Technologies
- Industrial Electricity
- Industrial Welding
- Information Technology
- Plumbing and Heating
- Refrigeration

### Financial Aid

The Free Application for Federal Student Aid is a general application used to determine eligibility for the Federal Pell Grant and the Alaska Education Grant. The FAFSA is the first step to apply for federal student loans and is also required as part of the application process for many scholarships and grants. AVTEC's School Code is 031603.

AVTEC accepts funding from most funding sources that provide written billing authorization detailing what will be funded by the organization.

### Contacts

- **Admissions Office:**  
admissions@avtec.edu
- **Financial Aid Office:**  
(907) 224-6156

## RECENT ALUMNI EMPLOYMENT

### Positions

- Assistant Port Engineer
- Benefit Accountant
- Carpenter
- City Clerk
- Commercial Fishing Captain
- Controls Technician
- Cook
- Deckhand/Assistant Engineer
- Electrical Technician
- Engineer/Diesel Mechanic
- Heating Technician
- Maintenance Specialist
- Mechanic
- Medical Records Clerk
- OT Network Administrator
- Patient Care Coordinator
- Piledriver/Welder
- Prep/Banquet/Line Cook
- Refrigeration Engineer
- Remote Support Specialist
- Service Technician
- Structural Welder/Fitter
- Technical Support Specialist

### Employers

- Alaska Sealife Center
- Alyeska Resort
- Anchorage School District
- Bering Straits Native Corporation
- Calista Corporation
- Convergint
- Copper River Seafoods
- Enstar Natural Gas Company Tours
- NANA Construction
- Parks and Recreation
- Southcentral Foundation
- Span Alaska
- State of Alaska
- Trident Seafoods
- University of Alaska

# 2022

# 93%

## COMPLETION RATE

# 90%

## PLACEMENT RATE

# \$21

## AVERAGE HOURLY STARTING WAGE



## AVERAGE HOURLY WAGES IN ALASKA

- Bookkeeping, Accounting, and Auditing Clerks: \$25.37
- Bus and Truck Mechanics and Diesel Engine Specialists: \$30.80
- Construction Laborers: \$25.61
- Cooks, Institution, and Cafeteria: \$21.64
- Electricians: \$38.78
- Heating, Air Conditioning and Refrigeration Mechanics and Installers: \$34.71
- Medical Secretaries and Administrative Assistants: \$21.37
- Mobile Heavy Equipment Mechanics, Except Engines: \$37.02
- Network and Computer Systems Administrators: \$43.08
- Plumbers, Pipefitters and Steamfitters: \$41.74
- Secretaries and Administrative Assistants, Except Legal, Medical, And Executive: \$21.20
- Welders, Cutters, Solderers and Brazers: \$34.51

## OCCUPATIONAL GROWTH FORECAST IN ALASKA

- Bookkeeping, Accounting, and Auditing Clerks: 10.87%
- Bus and Truck Mechanics and Diesel Engine Specialists: 11.67%
- Construction Laborers: 9.01%
- Cooks, Institution and Cafeteria: 15%
- Electricians: 11.04%
- Heating, Air Conditioning and Refrigeration Mechanics and Installers: 10.09%
- Medical Secretaries and Administrative Assistants: 15.49%
- Mobile Heavy Equipment Mechanics, Except Engines: 16.23%
- Network and Computer Systems Administrators: 8.22%
- Plumbers, Pipefitters and Steamfitters: 11.35%
- Secretaries and Administrative Assistants, Except Legal, Medical, And Executive: 9.78%
- Welders, Cutters, Solderers and Brazers: 13.83%

## AVTEC STUDENT SUCCESS

*"I chose to attend AVTEC because it is a great way to further education with hands-on training and open doors to many different opportunities in the workforce. I would recommend training at AVTEC because it is a great journey in success, improvement, and growth with wonderful people!"*

**Graduate:** Tatyana Avugiak, 2022

**Program:** Business and Office Technology

**Job:** Southcentral Foundation administrative assistant

*"If it wasn't for AVTEC, I would not be where I am today, and I would like to thank AVTEC in general for the program's continued efforts to equip students with the tools and guidance in helping students as well as alumni, like myself, in finding employment to better the lives of the said audience. Keep on keeping on with all your help and training for students to come as well as alumni!"*

**Graduate:** Nathaniel "Mik" Ayuluk, 2021

**Program:** Business and Office Technology

**Job:** Association of Village Council Presidents Accounting Specialist

*"I am excited, grateful, and thankful of everything I learned while in attendance at AVTEC. I am absorbing and learning as much as I can, as well as applying everything I learned while in training. I also wanted to thank you for providing a solid, firm, and definitely not-easy training. Your style of teaching, you weren't easy on us, has set me up so I can make it in the workforce."*

**Graduate:** Daphne Atlla, 2018

**Program:** Information Technology

**Job:** Doyon Ltd. Help Desk Technician

## Training Center Facilities



### Northern Industrial Training

1740 N. Terrilou Ct.  
Palmer, AK 99645  
(907) 357-6400

NIT is headquartered in Palmer, Alaska. This building contains three classrooms equipped with computers and projectors, a student resource lab equipped with five computers, nine restrooms, one conference room, eight offices, and multiple storage areas. Each classroom is equipped with internet, large screen TV monitors, whiteboards, and instructor computer system, and student desks and ergonomic chairs. Additionally, each classroom includes coffee service, microwave ovens and mini-fridges for student use.

NIT's welding and maintenance shop is located next to the main facility. The shop contains sixteen welding booths, three restrooms, one classroom, two offices, two large maintenance bays, and a large fabrication bay. The classroom contains internet, a large TV monitor, computer systems, and student desks and ergonomic chairs.

NIT's training range consists of 80 plus acres of open area and is equipped with three office trailers for use by NIT staff and students, and three portable restroom facilities that are rented and maintained by a third party. Each office trailer contains drinking water, a microwave, and coffee service for student use.

### Northern Industrial Training — Anchorage Extension

3201 C Street Ste. 308  
Anchorage, AK 99503

NIT's Anchorage extension is located in a shared office building in downtown Anchorage, Alaska. The building leased by NIT is 2230 square feet and contains one classroom, four offices, one conference room, on kitchen, and on storage area. The classroom is equipped with internet, large TV monitors, projectors, computer systems, student desks and ergonomic chairs.

### Northern Industrial Training — JBER Extension

4986 Zuckert Ave  
JBER, AK 99506  
(907)357-6400

NIT's Joint Base Elmendorf-Richardson extension is located on JBER, AK. Training facilities are made available through JBER., as training is requested.

### Northern Industrial Training — Fairbanks Extension

3400 International St Suite A  
Fairbanks, AK  
(907)357-6400

NIT Fairbanks is located in an office building equipped with training classrooms, offices, and a lab area.



***"NIT believes that when an individual with drive and desire is presented an opportunity in a professional environment – coupled with the highest quality training – they can become a skilled and valuable member of the workforce." - Joey Crum JD, ASP, President/CEO***



Northern Industrial Training, LLC (NIT) is a privately owned Alaskan company founded in 2003. NIT was founded under the principle of providing classroom and hands-training that provides innovative programs and curricula that leads to successful career paths for all Alaskans.

*NIT's mission is to build a future, one student, one client, one community at a time.*

Our programs are approved by the Alaska Commission on Post-Secondary Education (ACPE) and by the State Approving Agency (SAA), Alaska Office of Veterans' Affairs.

## High School Pathways Course Offerings

### Welding

This pathway focuses on the many different welding processes: SMAW (stick), GMAW (MIG), GTAW (TIG) & CAG (Carbon Arc Gouging). Outfitted with welding booths & a welding simulator, students will apply classroom learning in a welding shop.

### Alaskan Mechanic

This pathway focuses on small engines unique to Alaska, including automotive, ATV, snow machine & outboard. Students will work on equipment & learn valuable skills in diagnostics, repair & general maintenance.

### Entrepreneurial

These courses focus on the skills needed for success in today's modern business world: computer skills, personal finance, networking, marketing, job-readiness skills, & much, much more!

### Carpentry

This pathway focuses on woodworking & safety. Students will begin with basic concepts like construction math & drawings, & advance through skills required for site preparation, crew leadership, & roof systems.

### Electrical

This pathway focuses on Orientation to the electrical trade, electrical safety, Introduction to electrical circuits, and electrical theory.

### DUAL CREDIT

Pathways may qualify for dual credit in core competencies like math and science.

admissions@nitalaska.com 907-357-6400

## BUSINESS ADMINISTRATION

ADMINISTRATIVE ASSISTANT LEVEL 1 -160 HOURS  
ADMINISTRATIVE ASSISTANT LEVEL 2 -160 HOURS  
ADMINISTRATIVE ASSISTANT LEVEL 3 -160 HOURS

## TRUCKING

PRO TRUCK DRIVER -320 HOURS  
PRO TRUCK DRIVER -240 HOURS  
PRO TRUCK DRIVER -160 HOURS  
ENTRY LEVEL DRIVER TRAINING (ELDT) THEORY  
ELDT BEHIND-THE-WHEEL (BTW) SKILLS EVALUATIONS  
ELDT BTW SKILLS EVALUATION 1 WEEK  
ELDT BTW SKILLS EVALUATION 2 DAY  
ELDT BTW SKILLS EVALUATION 1 DAY  
ELDT BTW SKILLS EVALUATION 1/2 DAY  
CDL ROAD EXAM  
CDL WRITTEN EXAM PREP

## WELDING

STRUCTURAL WELDING LEVEL 1 -320 HOURS  
ADVANCED WELDING -320 HOURS  
ULTIMATE WELDING -320 HOURS  
PIPE WELDING -320 HOURS  
WELDING WORKSHOP  
AWS WELDING CERTIFICATION TESTING

## MECHANICS

HEAVY-DUTY MECHANICS -320 HOURS  
MECHANIC WORKSHOP

## HEAVY EQUIPMENT

CONSTRUCTION EQUIPMENT TRAINING 240 HOURS  
GRADER  
INDIVIDUAL EQUIPMENT

## SAFETY

NATIONAL SAFETY COUNCIL DEFENSIVE DRIVING  
DEFENSIVE DRIVING: ALIVE @25  
THINKING DRIVER WINTER EMPHASIS  
FIRST AID/CPR/AED  
INFANT FIRST AID  
40 HOUR HAZWOPER  
24 HOUR HAZWOPER  
8 HOUR HAZWOPER REFRESHER  
ATSSA TRAFFIC CONTROL FLAGGING  
FALL PROTECTION AUTHORIZED  
FALL PROTECTION COMPETENT PERSON  
OSHA 10 HOUR CONSTRUCTION  
OSHA 10 HOUR GENERAL INDUSTRY  
OSHA 30 HOUR CONSTRUCTION  
OSHA 30 HOUR GENERAL INDUSTRY  
AERIAL MANLIFT  
FORKLIFT  
FRONT END LOADER WITH FORKS  
ROUGH TERRAIN FORKLIFT  
QUALIFIED RIGGER/SIGNAL PERSON  
CONFINED SPACE ENTRY  
TRENCHING & SHORING  
ENERGY ISOLATION/LOCKOUT/TAG OUT  
RESPIRATORY PROTECTION

## CARPENTRY

ADVANCED CARPENTRY LEVEL 1 -320 HOUR

# BUILDING EXPERIENCE WITH INTERNSHIPS

Internships provide students with on-the-job work experience in their field of study. An internship may be paid, unpaid or partially paid as a stipend. Typically, internships are part-time during the university year, full-time in the summer, and often last six to 12 weeks. The following lists internships for Alaska Native and American Indian students.

## **Alaska Conservation Foundation**

Anchorage, AK | (907) 276-1917

[www.alaskaconservation.org](http://www.alaskaconservation.org)

It administers a paid 12-week summer internship program for undergraduate and graduate students who plan careers in conservation, environment, justice or closely related fields. Alaska Natives are encouraged to apply.

## **Alaska Legislative Internship Program**

Juneau, AK | (907) 796-6115

[www.uas.alaska.edu/internprogram](http://www.uas.alaska.edu/internprogram)

It is available to students attending UAA, UAF, UAS, APU or the University of Utah. Must be in a four-year degree program, have junior standing or be at the graduate level. All majors who have completed one political science class and have not worked for pay with the Alaska legislature during the past two years may apply. During the legislative session, it is a minimum of 30 hours per week, Monday through Friday. Students will earn 12 undergraduate or nine graduate credits for internship and a stipend. Students outside of Juneau will receive travel and relocation allowances.

## **Alaska Native Tribal Health Consortium Internship**

ANTHC offers internships through two departments: Research Services (RS), which conducts Tribally-driven research into health issues affecting Alaska Native people, and the Division of Environmental Health and Engineering (DEHE). Within RS, internships and educational opportunities are offered for undergraduate and graduate students who are interested in careers in health research and healthcare.

A paid full-time summer internship for AI/AN students is offered through the Alaska Indigenous Research Program. Other educational opportunities can be arranged for individual students or as partnerships with universities and may fulfill university credit requirements for practicums, internships, or independent study. For more information, contact [afrance@anthc.org](mailto:afrance@anthc.org) or (907) 729-2906.

## **Alyeska Pipeline Service Company**

Anchorage, AK | (907) 787-8117

[www.alyeska.com/employment](http://www.alyeska.com/employment)

Alyeska Internship offers 12-week paid internships for college students attending an accredited university. Applicable majors include accounting, engineering, business, project management, safety, technology, natural science, environmental science and audit.

Internships are available in Fairbanks, Anchorage, Valdez, and pump station locations.

## **American Association of Advertising Agencies**

New York, NY | (212) 682-2500

[www.aaaa.org](http://www.aaaa.org)

The 4As Multicultural Advertising Intern Program helps jumpstart careers of African American, Asian American, Latino American, Native American, multiracial and multicultural aspiring advertising professionals. Undergraduate and graduate students complete a 10-week paid summer internship.

## **American Bar Association Diversity Clerkship Program**

[www.americanbar.org](http://www.americanbar.org)

It provides summer work in business law to Native Americans and other student members of the American Bar Association and its Section of Business Law who will help the section fulfill its goal of promoting diversity.

## **American Indian Science & Engineering Society**

Albuquerque, NM | (505) 765-1052

[www.aises.org](http://www.aises.org) | [info@aises.org](mailto:info@aises.org)

It provides merit-based scholarships and internship programs. The 10-week internship program is at federal, tribal and private organizations.

## **Andrew W. Mellon Advanced Training Program in Object and Textile Conservation Internships**

[www.americanindian.si.edu](http://www.americanindian.si.edu)

It provides students and professionals involved in conserving museum collections with an opportunity to participate in a training program at the Smithsonian Institution's National Museum of the American Indian.

## **APA Minority Medical Student Summer Mentoring**

[www.psychiatry.org](http://www.psychiatry.org)

It funds Native American and minority medical students interested in working on a summer project with a psychiatrist mentor.

## **Baker Hostetler Diversity Fellowship Program**

[www.bakerlaw.com](http://www.bakerlaw.com)

It provides summer work experience to Native American and minority law school students.

## **Biomedical Research Training Program for Underrepresented Groups**

[www.nhlbi.nih.gov](http://www.nhlbi.nih.gov)

It provides training in biomedical sciences and clinical research disciplines to Native Americans and other undergraduates, graduate students and post-baccalaureates from underrepresented groups.

## **Bullivant Houser Bailey Law Student Diversity Fellowship Program**

[www.bullivant.com/diversity](http://www.bullivant.com/diversity)

It provides financial assistance and work experience to Native American and minority law students.

## **CDC Minority Internships & Fellowships**

[www.cdc.gov](http://www.cdc.gov)

It provides an opportunity for minority undergraduate through doctoral students to conduct research at Prevention Research Centers funded by the U.S. Office of Minority Health and Health Equity.

## **Central Intelligence Agency Internship**

Washington, D.C.

(800) 368-3886

[www.cia.gov/careers](http://www.cia.gov/careers)

It provides an internship program for high school seniors planning to enroll in a 4- or 5-year college program and first-year college students or sophomores enrolled in a four- or five-year college program. Applicants must maintain full-time status during the school year. In addition, applicants must work

during summer breaks in metropolitan Washington, D.C. Interns receive an annual salary and up to \$18,000 scholarship per academic year for tuition, fees, books and supplies. Minimum 3.0 GPA. Minimum 18 years by April 1.

### **Challenge Alaska Therapeutic**

Anchorage, AK | (907) 344-7399

[www.challengealaska.org](http://www.challengealaska.org)

The recreation internship provides adaptive sports, therapeutic recreation and education for people with disabilities. Each intern will have the opportunity to experience what Challenge Alaska offers. Minimum 16-week internships are available in summer/winter.

### **Chugach Alaska Corporation**

3800 Centerpoint Drive,

Anchorage, AK 99503

(907) 550-4150

[www.chugach-ak.com](http://www.chugach-ak.com)

It administers an internship program for Chugach Alaska Corporation shareholders and their descendants. In addition, it provides resources to full-time or part-time college students to obtain their degrees while gaining work experience. Interns work under the supervision of a manager of Chugach Alaska Corporation or one of its subsidiaries or business partners. Minimum 2.0 GPA. High school graduate or GED.

### **Commercial & Federal Litigation Minority Fellowship**

[www.tnybf.org](http://www.tnybf.org)

It provides an opportunity for Native American and minority residents of any state attending law school in New York to gain summer work experience in a litigation position in the public sector in the state.

### **Cook Inlet Tribal Council, Inc.**

Anchorage, AK | (907) 793-3183

[internship@citci.org](mailto:internship@citci.org) | [citci.org](http://citci.org)

CITC provides students in good academic standing real-life work experience and a deeper cultural connection through a 12-week paid summer internship.

### **COOK INLET REGION, INC. INTERNSHIP PROGRAM**

(907) 274-8638 | [info@ciri.com](mailto:info@ciri.com)

[www.ciri.com/internship](http://www.ciri.com/internship)

CIRI provides paid summer internship opportunities for qualifying shareholders and descendants within various departments and subsidiaries based on the student's goals. Internships are not limited to Anchorage. It also runs the NextGen program for youth 10 to 18 years.

### **Department of the Interior Diversity Intern Program**

[www.doi.gov/pathways](http://www.doi.gov/pathways)

It provides experience at federal agencies involved with natural and cultural resources to Native American and other minority college and graduate students and students with disabilities.

### **Department of State Student Intern Program**

[careers.state.gov](http://careers.state.gov)

It provides a work/study opportunity to minority and undergraduate and graduate students interested in foreign service.

### **Federal Bureau of Investigation**

Anchorage, AK | (907) 276-4441

[www.fbijobs.gov](http://www.fbijobs.gov)

It provides paid and unpaid internships available with the FBI nationwide. It administers Honors Internship, Volunteer Internship, Visiting Scientist Program, National Security Internships, and Middle Eastern Foreign Language Honors Internship programs.

### **First Alaskans Institute**

Anchorage, AK | (907) 677-1700

[www.firstalaskans.org](http://www.firstalaskans.org)

[info@firstalaskans.org](mailto:info@firstalaskans.org)

It provides a summer internship program to develop Native leadership with Alaska Native students in good academic standing (college juniors, seniors or graduate students) placed within organizations across Alaska.

### **Geosocps American Indian Internships**

[www.geosociety.org](http://www.geosociety.org)

It provides work experience in national parks to American Indians and Alaska Natives who are student members of the society.

### **Harvard University**

Cambridge, MA | (617) 495-1581

[www.orgs.law.harvard.edu](http://www.orgs.law.harvard.edu)

Student internship allows applicants to assist EPA/Tribal agencies with environmental issues. Interns receive a limited travel/housing allowance and can earn \$4,000 during the 10-week training. Must be a U.S. citizen, have a valid driver's license and major in a field related to environmental studies.

### **Indian Land Tenure Foundation**

Little Canada, MN | (651) 766-8999

[www.iltf.org](http://www.iltf.org)

It provides full-time, paid internship positions for 10 to 12 weeks (400 hours). Salary with potential additional funds for living and relocation expenses. Must be willing to travel and interact in new or different environments socially and culturally.

### **Interior Community Health Center**

Fairbanks, AK | (907) 455-4567

[www.interiorcommunityhealth.org](http://www.interiorcommunityhealth.org)

Seasonal and summer internship positions are available in health-related fields. Locations are available in Fairbanks and Healy, Alaska.

### **JTBF Judicial Externship/ Clerkship Program**

[www.jtb.org](http://www.jtb.org)

It provides work experience to Native American and underrepresented law students who plan to seek judicial clerkships after graduation.

### **Judicial Intern Opportunity Program**

[www.americanbar.org](http://www.americanbar.org)

It provides an opportunity for Native Americans and other traditionally underrepresented law students to gain experience as judicial interns in selected courts during the summer.

### **Koahnic Corporation Broadcast**

Anchorage, AK | (907) 793-3500

[www.knba.org](http://www.knba.org)

KBC provides professional development, educational opportunities and internships to increase the number of Native people engaged in media careers.

### **Mickey Leland Energy Fellowships**

[www.orise.orau.gov/mlef](http://www.orise.orau.gov/mlef)

It provides summer work experience at fossil energy sites of the Department of Energy to Native Americans, underrepresented minorities and female students.

### **Minority Access Internship**

[www.minorityaccess.org/ndiip.html](http://www.minorityaccess.org/ndiip.html)

It provides experience to Native American and minority graduate students interested in internships at participating entities in Washington, D.C., and throughout the United States.

### **MCHC/RISE-UP Program**

Baltimore, MD | (443) 923-5879  
[www.kennedykrieger.org](http://www.kennedykrieger.org)

It is for undergraduates in their junior or senior year or recent grads with degrees in psychology, social work, biology, nursing, public health, sociology or related disciplines from underrepresented populations interested in learning about disease prevention. It is for 10 weeks during the summer, with a stipend for participants and housing/travel aid available. Other program sites include South Dakota and California.

### **The Morris K. Udall Foundation**

Tucson, AZ | (520) 901-8500  
[www.udall.gov](http://www.udall.gov)

The Native American Congressional Internship provides a 10-week summer internship in Washington, D.C., for Native American and Alaska Native students to learn about the federal government and Indian Country. The internship includes round-trip airfare, housing, per diem for food and incidentals and a stipend at the program's close.

### **Mt. Edgecumbe Hospital**

Sitka, AK | (907) 966-2411  
[searhc.org/careers/education-training](http://searhc.org/careers/education-training)

It provides a summer internship and a pharmacy externship program for Native students at Mt. Edgecumbe Hospital and the SEARHC Juneau Clinic. Available to students attending high school, college or technical programs and includes a travel stipend.

### **Multicultural Advertising Intern Program**

[www.foundation.aaaa.org/maip.html](http://www.foundation.aaaa.org/maip.html)

It provides Native Americans and minority students with summer work experience in advertising agencies, giving an overview of the agency business.

### **Museum of the North**

Fairbanks, AK  
[www.uaf.edu/museum/education](http://www.uaf.edu/museum/education)

The Museum Internship is for University of Alaska students studying education, anthropology, rural development, archaeology, northern studies, history, and other humanities or science-based disciplines.

### **NABL Governmental Affairs Summer Associate Program**

[www.nabl.org](http://www.nabl.org)

It provides an opportunity for Native American and minority law students to learn about municipal bond law in a summer internship at the Governmental Affairs Office of the National Association of Bond Lawyers.

### **National Museum of the American Indian**

#### **Conservation Six-month Pre-program Internship**

[www.americanindian.si.edu](http://www.americanindian.si.edu)

It provides an opportunity for students planning a graduate training program in art conservation to learn about the field during an internship at the Smithsonian Institution's National Museum of the American Indian. Deadlines vary by year.

### **National Park Service Internships**

Washington, D.C. [www.nps.gov](http://www.nps.gov)

It is an opportunity for undergraduate and graduate students to explore the cultural resources/historic preservation field. Each summer and academic year, the Cultural Resources Diversity Internship Program offers paid internships with National Park Service park units and administrative offices, other federal agencies, state historic preservation offices, local governments and private organizations.

### **North Wind**

<https://northwindgrp.com>

A CIRI subsidiary - business leader in environmental, engineering, facility operations, construction, IT/Cyber, and professional services industries.

### **Pathways for Students and Recent Graduates to Federal Careers**

Washington, D.C.  
(202) 606-1800

[www.usajobs.gov](http://www.usajobs.gov)

It provides high school, undergraduate, graduate, vocational, professional, technical and trade students with paid internships related to their career path while exploring federal careers. Must be at least 16 years old, a U.S. citizen and in good academic standing. Interns may work part- or full-time and may work with the agency to set expectations for their internship. Pathways to Federal Careers also has a Recent Graduates Program that provides one-year career development and training.

### **Providence Hospital**

Anchorage, AK | (907) 212-6400  
[www.providence-alaska.jobs](http://www.providence-alaska.jobs)

Nursing internship programs offer classroom and practical content in adult critical care, progressive care, and acute medical or surgical care with the Children's Hospital at Providence.

### **Recruitment and Retention of Alaska Natives into Nursing, University of Alaska Anchorage**

(907) 786-4550 | [nursing@alaska.edu](mailto:nursing@alaska.edu)  
[www.uaa.alaska.edu](http://www.uaa.alaska.edu)

The RRANN program is run through UAA to increase the number of Alaska Natives and American Indians graduating with a two-year or four-year degree in the nursing program. It offers mentoring and tutoring services, financial assistance, on-campus housing, childcare assistance, stipends and internship opportunities.

### **Salvation Army**

Anchorage, AK | (907) 276-2515  
[www.alaska.salvationarmy.org](http://www.alaska.salvationarmy.org)

Volunteer opportunity: assist in various areas, from social services to office work to character-building activities. Background checks are necessary for anyone working with children and adults.

### **School for Advanced Research**

Santa Fe, NM | (505) 954-7200  
[www.sarweb.org](http://www.sarweb.org)

It offers opportunities for indigenous artists, social scientists and writers, including internships, resident scholar, artist and writer programs.

### **Semester Internships in Geoscience Policy**

[www.americangeosciences.org](http://www.americangeosciences.org)

It provides work experience to Native American and geoscience students with a strong interest in federal science policy.

### **SEO Corporate Law Program**

<https://career.seo-usa.org>

It provides summer work experience to Native Americans and other students of color studying corporate law.

### **Southcentral Foundation's Nuka Internship/Fellowship Experience**

It is a paid 11-month improvement internship (AN/AI college graduates) or fellowship (AN/AI graduate students) within SCF's Nuka System of Care which utilizes a relationship-based, customer-owned approach to transforming

health care. It provides an opportunity to participate in the redesign of systems and processes of SCF. The goal is to provide a robust experiential learning experience with opportunity to work alongside improvement and integrated care teams on improvement projects in rural and urban health care settings. Position is on site in Anchorage, AK from June to May.

### **Southeast Alaska Conservation Council**

Juneau, AK | (907) 586-6942  
www.seacc.org

It provides paid internships throughout the year, including summer, for college students, graduates and volunteers. The program requires a minimum 10-week commitment. In addition, SEACC will pay for round-trip travel to Juneau.

### **Summer Transportation Internship Program for Diverse Groups**

www.fhwa.dot.gov

To enable Native Americans and other undergraduate, graduate and law students from diverse groups to gain work experience during the summer at facilities of the U.S. Department of Transportation.

### **SUNY College of Environmental Science and Forestry**

Syracuse, NY | www.esf.edu

SUNY offers fellowships to Native American students attending ESF. It includes an annual scholarship and research experience. In addition, students are provided mentors and hands-on learning experience in environmental science.

Must have combined science and math SAT scores of 900 and a minimum 85 percent grade on the high school transcript.

### **Tanana Chiefs Conference**

Fairbanks, AK | (907) 452-8251

www.tananachiefs.org

TCC provides jobs, training, internships and youth programs for TCC and Doyon tribal members, Alaska Natives and American Indians who reside in the Fairbanks area or TCC villages.

### **William Randolph Hearst Endowed Fellowship**

Washington, D.C.

www.aspeninstitute.org/programs

The fellowship, based on academic excellence and need, is open to undergraduate and graduate students of color.

There are three fellows selected per year. In addition, the Hearst Fellow serves as an intern with PSI in the Washington, D.C., office of the Aspen Institute.

### **WMACCA Corporate Scholars Program**

acc.com

It provides a summer internship in the metropolitan Washington, D.C., area to Native Americans and other students at area law schools who will contribute to the profession's diversity.

## **EDUCATION AND EMPLOYMENT RESOURCES**

This section lists services available in Alaska for individuals interested in post-secondary education, training and employment opportunities.

### **Alaska Adult Education**

(907) 465-4685 jobs.alaska.gov/aae  
AAE includes basic skills, life skills, literacy, English as a second language, GED studies and testing for adults 16 years and older.

### **Alaska Apprenticeship Training Coordinators Association**

(907) 562-0075

https://aatca.org

It provides info about training opportunities available to Alaskans not available in traditional schools.

### **Alaska Dept. of Vocational Rehabilitation**

https://labor.alaska.gov/dvr

Each year, the Division of Vocational Rehabilitation helps hundreds of Alaskans with disabilities prepare for, get and keep good jobs. Suppose you want to work (or keep working) and have a physical, intellectual or mental condition that makes it hard. In that case, you may be eligible for vocational rehabilitation services.

### **Alaska Career Information System**

Juneau, AK (907) 465-2962

https://acpsecure.alaska.gov

AKCIS is an online service that provides:

- Career information software and tools on Alaska occupations, programs of study and training.
- Alaska and national post-secondary colleges, vocational training schools, and military fields.
- Job search and apprenticeship information.

### **Alaska Job Center Network**

www.jobs.state.ak.us

It is an Alaska-specific job search database for job training, public assistance, "Hot Jobs," and more. In addition, it connects with other state websites and services.

### **Alaska Job Corps**

www.alaska.jobcorps.gov

This residential training center for 16 to 24-year-old Alaskans is free and includes students' room, board, uniform allowance and up to two years of self-paced training.

### **Alaska Native Hire**

(907) 263-5173

www.alaskanativehire.com

Operated by CIRI, Alaska Native Hire is for Alaska Natives to use as a searchable job and resume database for job seekers and employers.

### **Alaska Native Tribal Health Consortium**

(907) 729-1301 | www.anthc.org

careers@anthc.org

Connect with Alaska Native culture and help provide health services to Alaska Native and American Indian people. Jobs are not limited to Anchorage and cover fields from accounting to engineering and nursing to support services.

### **Alaska's People**

#### **Career Development Center**

(907) 793-3300 | https://citci.org

Alaska's People Career Development Center is a walk-in resource center for those seeking employment or training co-located alongside the Alaska Department

Labor and Workforce Development at the CITC Career Development Center. It is open to Alaska Natives and American Indians, offering career guidance, job search help, workshops and a computer service center with printer and internet access.

### **Alaska Safety Alliance**

www.alakasafetyalliance.org

Dedicated to safe, trained and ready Alaska workers.

### **Alaska Small**

#### **Business Development Center**

(907) 786-7201 | https://aksbdc.org

It provides free, confidential technical business assistance and low-cost business training. SBDC has helped Alaska businesses begin, prosper and grow for over 20 years. SBDC is partly funded through a cooperative agreement with the U.S. Small Business Administration.

### **Anchorage Municipality Jobs**

www.muni.org

Apply for jobs with the Municipality of Anchorage; union and non-union fields are available. Applicants may request to be notified of specific opportunities and seek volunteer positions.

### **Alaska Vocational Technical Center**

P.O. Box 889, Seward, AK 99664

(907) 224-3322

https://avtec.edu

AVTEC is a division of the Alaska Department of Labor and Workforce Development. Established as a

vocational and technical training center that offers a variety of training programs in Seward, Anchorage and via distance education courses online.

**AHAINA Multicultural Center at the University of Alaska Anchorage**  
(907) 786-4070

[www.uaa.alaska.edu/multicultural](http://www.uaa.alaska.edu/multicultural)  
It offers student services at the UAA campus: Academic Success Workshops and Seminars, Academic Support, Essay Writing Workshops, Financial Aid Workshops, Health and Wellness Workshops, Multicultural /Diversity Education Programs, Peer Mentors, Student Advocacy and Intervention, Scholarship and Internship Information, Tuition Waivers, Freshman Foundation Program and the Sophomore Success Program.

**CIRI JOB OPPORTUNITIES**

(907) 274-8638

[www.ciri.com/careers/jobs](http://www.ciri.com/careers/jobs)

It offers an annual career fair to learn about jobs with CIRI and affiliates, apply in person for available positions. It also maintains a website of open CIRI and CIRI subsidiary positions in various fields for which CIRI shareholders and descendants are encouraged to apply. It also maintains an Alaska Native artist directory and a directory of shareholder businesses.

**Cook Inlet Housing Authority**

[www.cookinlethousing.org](http://www.cookinlethousing.org)

It creates housing opportunities that empower our people and build our community.

**Cook Inlet Tribal Council, Inc.**

(907) 793-3300 | [www.citci.org](http://www.citci.org)

It offers services open to anyone seeking a training opportunity. And it promotes employment and training for Alaska Natives in Alaska. Assists employers with recruitment, screening and evaluation of candidates for apprenticeship and training programs; refer qualified Native job seekers to employers statewide free of charge. Also may provide GED preparation.

**Federal Job Search**

[www.usajobs.gov](http://www.usajobs.gov)

It is a searchable database of U.S. federal jobs at all levels with links to internships and bridge programs. Applicants can save a profile and apply for multiple jobs. Locations and pay vary, as do closing dates and eligibility requirements.

**Harvard University Native American Program**

(617) 495-4923

[www.hunap.harvard.edu](http://www.hunap.harvard.edu)  
[hunap@harvard.edu](mailto:hunap@harvard.edu)

It brings together Native American Alaska Native and Native Hawaiian students and interested individuals from the Harvard community to advance the well-being of indigenous people through self-determination, academic achievement and community service.

**North Wind**

<https://northwindgrp.com>

A CIRI subsidiary - business leader in environmental, engineering, facility operations, construction, IT/Cyber, and professional services industries.

**Southcentral Foundation**

(907) 729-8541

[Scfnuka.com/learning-program](http://Scfnuka.com/learning-program)  
[SCFAcademicPrograms@southcentralfoundation.com](mailto:SCFAcademicPrograms@southcentralfoundation.com)

Clinical Initiatives Registered Nurse Case Manager Training Program is a paid opportunity designed for new Alaska Native/American Indian nurses to learn and grow in the case management specialty. Residents are paired with a mentor.

**U.S. Department of Veterans Affairs**

1201 N. Muldoon Road,  
Anchorage, AK 99504  
(907) 257-4700

[www.alaska.va.gov](http://www.alaska.va.gov)  
Education and training benefits are available to veterans, current Armed Forces members, dependents, and other eligible persons for post-secondary education.

**WeBuildAlaska.com**

Dozens of resources, links and information about training centers in Alaska.



# DIVERSE PATHWAYS

## WWAMI MEDICAL EDUCATION PROGRAM

The WWAMI Medical Education Program offers a unique pathway for Washington, Wyoming, Alaska, Montana, and Idaho residents to pursue medical education through a collaborative model with the University of Washington School of Medicine. This program allows students from these states to access medical education resources and opportunities closer to home.

### Program Overview

The WWAMI Program is designed to extend the University of Washington School of Medicine's high-standard medical education to students in the participating states. Admission to the program requires acceptance as a first-year medical student by the University of Washington School of Medicine.

### Tuition

Alaska WWAMI students benefit from paying resident tuition rates at the University of Washington School of Medicine throughout the four-year medical program.

### Curriculum

Upon admission, Alaska's WWAMI students commence their first year of medical education at the University of Alaska Anchorage, offering a blend of local and broad-based medical education experiences.

### Application Process

Interested students must apply directly to the University of Washington School of Medicine. Successful applicants from Alaska will then be part of the WWAMI program, starting their journey in Anchorage for their initial year of study.

For more information, contact one of the WWAMI offices. Call (907) 786-4789 in Alaska or explore more online at [uaa.alaska.edu/academics/college-of-health/departments/wwami](http://uaa.alaska.edu/academics/college-of-health/departments/wwami). The Washington Program details can be found at [education.uwmedicine.org](http://education.uwmedicine.org).

The WWAMI Medical Education Program is a testament to innovative collaboration in medical education, aiming to provide comprehensive medical training while keeping students connected to their home states.

## WICHE EXCHANGE PROGRAM

The Western Interstate Commission for Higher Education is a cornerstone for expanding educational access and enhancing student success across the Western United States. As a regional nonprofit consortium of 16 member states and territories, WICHE's mission is to foster collaboration and resource sharing to improve higher education outcomes.

### Contact Information

3035 Center Green Dr., Ste 200, Boulder, CO 80301  
(303) 541-0200  
[www.wiche.edu](http://www.wiche.edu) [info-sep@wiche.edu](mailto:info-sep@wiche.edu)

### Eligibility and Application Insights

Eligibility for WICHE's benefits extends to residents of member states or territories, allowing them to access reduced tuition rates at participating institutions. Interested students should apply directly to their chosen institution, as WICHE does not manage applications or selection processes. It's important to note that qualification for WICHE rates requires a proactive application and is subject to program capacities.

### WICHE's Signature Programs

#### 1. Undergraduate Exchange Program:

- Offers Alaska residents and those from 15 other member states the opportunity to attend participating institutions at reduced rates.
- Students typically pay 150% of the host institution's in-state tuition rate.
- More details can be found on WICHE's Undergraduate Exchange Program page.

#### 2. Western Regional Graduate Program:

- Allows residents from member states, including Alaska, to pursue selected graduate degrees at reduced tuition rates.
- This program includes master's and doctoral degrees, with admissions requirements set by the host institution.
- Visit WICHE's Western Regional Graduate Program page for more information.

#### 3. Professional Student Exchange Program:

- Supports students pursuing professional healthcare degrees in dentistry, medicine, and veterinary medicine at out-of-state institutions.
- Applicants must seek "certification" from their home state to confirm eligibility, with residency requirements varying by state.
- The application deadline for PSEP certification is typically October 15th of the year preceding admission.
- Additional details are available on WICHE's Professional Student Exchange Program page.

### Navigating Your Educational Path with WICHE

WICHE presents a pathway for students in the West to pursue higher education with financial flexibility. Whether you're an undergraduate looking to explore degrees across states, a graduate student seeking specialized programs, or a professional student aiming for a healthcare career, WICHE programs offer valuable opportunities to advance your education at a reduced cost. Engaging early with the application process and meeting all program requirements are crucial steps in leveraging the full benefits of WICHE's offerings for your academic and professional journey.

## TRIBAL COLLEGES & UNIVERSITIES

### Alaska

Iłisaġvik College  
100 Stevenson St.,  
Utqiaġvik, AK, 99723  
(907) 852-3333 | [www.ilisagvik.edu](http://www.ilisagvik.edu)

### Arizona

Diné College, Tsaile Campus  
1 Circle Drive, Rt 12,  
Tsaile, AZ 86556  
(928) 724-6600  
[www.dinecollege.edu](http://www.dinecollege.edu)

Tohono O'odham  
Community College  
P.O. Box 3129, Sells, AZ 85634  
Sells: (520) 383-8401  
Tucson: (520) 623-6175  
[www.tocc.edu](http://www.tocc.edu) | [info@tocc.edu](mailto:info@tocc.edu)

### Kansas

Haskell Indian Nations University  
155 Indian Ave.,  
Lawrence, KS 66046  
(785) 749-8404 | [www.haskell.edu](http://www.haskell.edu)

### Michigan

Bay Mills Community College  
12214 W. Lakeshore Drive,  
Brimley, MI 49715  
(906) 248-3354 | [www.bmcc.edu](http://www.bmcc.edu)

Keweenaw Bay  
Ojibwa Community College  
770 N. Main St., L'Anse, MI 49946  
(906) 524-8400 | [www.kbocc.edu](http://www.kbocc.edu)

Saginaw Chippewa Tribal College  
2274 Enterprise Dr,  
Mount Pleasant, MI 48858  
(989) 317-4760 | [www.sagchip.edu](http://www.sagchip.edu)

### Minnesota

Fond Du Lac Tribal and  
Community College  
2101 14th St., Cloquet, MN 55720  
(218) 879-0800  
<https://fdltcc.edu>

Leech Lake Tribal College  
6945 Little Wolf Road NW,  
Cass Lake, MN 56633  
(218) 335-4200 | [www.lltc.edu](http://www.lltc.edu)

White Earth Tribal and  
Community College  
2250 College Road,  
Mahnomon, MN 56557  
(218) 935-0417 | [www.wetcc.edu](http://www.wetcc.edu)

### Montana

Blackfeet Community College  
504 SE Boundary St.,  
Browning, MT 59417  
(406) 338-5421 | <https://bfcc.edu>

Chief Dull Knife College  
1 College Drive,  
Lame Deer, MT 59043  
(406) 477-6215 | [www.cdnc.edu](http://www.cdnc.edu)

Aaniiih Nakoda College  
P.O. Box 159, Harlem, MT 59526  
(406) 353-2607  
[www.ancollege.edu](http://www.ancollege.edu)

Fort Peck Community College  
605 Indian Ave.,  
Poplar, MT 59255  
(406) 768-6300 | [www.fpcc.edu](http://www.fpcc.edu)

Little Big Horn College  
8645 S. Weaver Drive,  
Crow Agency, MT 59022  
(406) 638-3104 | [www.lbhc.edu](http://www.lbhc.edu)

Salish Kootenai College  
58138 Highway 93,  
Pablo, MT 59855  
(406) 275-4800 | [www.skcc.edu](http://www.skcc.edu)

Stone Child College  
8294 Upper Box Elder Road,  
Box Elder, MT 59521  
(406) 395-4875  
[www.stonechild.edu](http://www.stonechild.edu)

### Nebraska

Little Priest Tribal College  
601 E. College Drive,  
Winnebago, NE 68071  
(402) 878-2380  
[www.littlepriest.edu](http://www.littlepriest.edu)

Nebraska Indian  
Community College  
Campuses in Macy, Santee  
and South Sioux City  
(844) 440-6422  
[www.thenicc.edu](http://www.thenicc.edu)

### New Mexico

Navajo Technical University  
Lowerpoint Rd, State Highway 371  
Crownpoint, NM 87313  
(505) 786-4100  
[www.navajotech.edu](http://www.navajotech.edu)

Diné College, Shiprock Branch  
1228 Yucca St.,  
Shiprock, NM 87420  
(505) 368-3500  
[www.dinecollege.edu](http://www.dinecollege.edu)

Institute of American Indian Arts  
83 Avan Nu Po Road,  
Santa Fe, NM 87508  
(505) 424-2325 | <https://iaia.edu>

Southwest Indian  
Polytechnic Institute  
9169 Coors Blvd.,  
Albuquerque, NM 87120  
(505) 346-2338 | [www.sipi.edu](http://www.sipi.edu)

### North Dakota

Cankdeska Cikana  
Community College  
214 1st Ave., Fort Totten, ND 58335  
(701) 766-4070  
[www.littlehoop.edu](http://www.littlehoop.edu)

Nueta Hidatsa Sahnish College  
220 Eighth Ave. E,  
New Town, ND 58763  
(701) 627-4738 | [www.nhsc.edu](http://www.nhsc.edu)

Sitting Bull College  
9299 Highway 24,  
Ft Yates, ND 58538  
(701) 854-8000  
[www.sittingbull.edu](http://www.sittingbull.edu)  
[info@sittingbull.edu](mailto:info@sittingbull.edu)

Turtle Mountain  
Community College  
10145 BIA Road 7,  
Belcourt, ND 58316  
(701) 477-7862 | [www.tm.edu](http://www.tm.edu)

United Tribes Technical College  
3315 University Drive,  
Bismarck, ND 58504  
(701) 255-3285 | [www.uttc.edu](http://www.uttc.edu)

### South Dakota

Oglala Lakota College  
490 Piya Wiconi Road,  
Kyle, SD 57752  
(605) 455-6000 | [www.olc.edu](http://www.olc.edu)

Sinte Gleska University  
101 Antelope Lake Circle,  
Mission, SD 57555  
(605) 856-8100  
[www.sintegleska.edu](http://www.sintegleska.edu)

Sisseton-Wahpeton College  
BIA Road 700,  
Agency Village, SD 57262  
(605) 698-3966  
[www.swcollege.edu](http://www.swcollege.edu)

### Washington

Northwest Indian College  
2522 Kwina Road,  
Bellingham, WA 98226  
(360) 676-2772  
[www.nwic.edu](http://www.nwic.edu)  
[admissions@nwic.edu](mailto:admissions@nwic.edu)

### Wisconsin

College of Menominee Nation  
N172 Highway 47/55,  
Keshena, WI 54135  
(715) 799-5600  
[www.menominee.edu](http://www.menominee.edu)

Lac Courte Oreilles Ojibwa  
Community College  
13466 W. Trepania Road,  
Hayward, WI 54843  
(715) 634-4790 | [www.lco.edu](http://www.lco.edu)  
[info@lco.edu](mailto:info@lco.edu)



# ELEVATING YOUR EDUCATIONAL JOURNEY: STRATEGIES FOR SUCCESS

*Embarking on an educational journey is both exhilarating and challenging. This guide equips you with essential strategies and resources to navigate your path effectively, focusing on building productive relationships with professors, honing your study and exam techniques, and prioritizing your well-being.*

## EFFECTIVE STUDY STRATEGIES

### Organizing Study Time:

- Aim for a balanced study plan, allocating three hours of study time per course credit weekly.
- Dedicate at least two hours of self-study for every hour spent in class to reinforce learning.

### Balancing Study and Leisure:

- Approach studying with the diligence of a full-time job, aiming for 40 hours a week if you're a full-time student.
- Clearly define your study hours and spaces to separate academic responsibilities from relaxation time.

### Designing Your Study Space:

- Select a quiet, well-organized area dedicated solely to studying to enhance focus.
- Use noise-canceling headphones or room dividers to minimize distractions and maintain concentration.

### Maintaining Motivation:

- Establish a consistent study routine, viewing it as essential to your growth.
- Participate in study groups and regularly communicate with your professors for support and clarity.

## MAXIMIZING INSTITUTIONAL RESOURCES

### Leveraging School Services:

- Take full advantage of resources included in your tuition, like tutoring centers, libraries, and career counseling.
- Build strong connections with academic advisors and support staff who can guide and assist you throughout your educational journey.

### Utilizing Online Study Aids:

- Explore How-to-Study.com for quizzes and personalized study tips.
- The Dartmouth Academic Skills Center offers tools for effective study habits.
- Best Accredited Colleges - Studying 101 provides a comprehensive study guide.
- The Library of Congress offers many academic resources for research and learning.

## MASTERING EXAM PREPARATION

### Prioritizing Wellness:

- Ensure adequate rest before exams to optimize performance.
- Familiarize yourself with the exam format and adjust your study schedule accordingly.

### Crafting Study Materials:

- Create personalized study guides to organize and reinforce key concepts.

### Navigating Placement and Advanced Standing

- Prepare thoroughly for placement tests to reflect your knowledge level accurately.
- Investigate opportunities to test out of classes to streamline your academic path and save on tuition.

## FOSTERING PROFESSIONAL RELATIONSHIPS

### Interacting with Professors:

- Address instructors formally and make the most of office hours for personalized guidance.
- Proactively seek assistance when challenges arise, valuing early intervention.

## MANAGING ACCOMMODATIONS AND ADJUSTMENTS

### Navigating Life's Challenges:

- Communicate openly with your institution if personal issues impact your academic performance.
- Before altering your enrollment status, consider the implications for your financial aid and scholarships.

This guide is designed to be your companion in achieving academic excellence and personal growth. By applying these strategies, you're not just pursuing success but laying the groundwork for a rewarding educational experience and future career.

# QUICK REFERENCE

## THE CIRI FOUNDATION PAGE 14

### UNLOCKING POTENTIAL

The Value of Higher Education	2
Choosing Your Educational	3

### PLANNING YOUR CAREER PATH

Finding Your Ideal School	4
What To Do & When To Do It	6

### UNDERSTANDING FINANCIAL AID

Financial Aid Options	7
Student Loans & Grants	8
Federal Student Aid Programs	9
FAFSA	10

### LEVERAGING ANCSA FOR EDUCATIONAL ADVANCEMENT

Alaska Native Scholarships	12
AHTNA Region	17
Aleut Region	17
Arctic Slope Region	17
Bering Straits Region	18
Bristol Bay Region	18
Calista Region	18
Chugach Region	19
COOK INLET REGION	20
Doyon Region	20
Koniag Region	21
NANA Region	21
Sealaska Region	22

### TRIBAL COUNCILS & ASSOCIATIONS OF COOK INLET REGION SCHOLARSHIPS

Chickaloon Village Traditional Council	23
Cook Inlet Tribal Council	23
Eklutna Inc.	23
Kenaitze Indian Tribe	23
Knik Tribal Council	23
Native Village of Eklutna	23
Native Village of Tyonek	23
Ninilchik Native Association Inc.	24
Ninilchik Traditional Council	24
Salamatof Native Association Inc.	24
Seldovia Native Association Foundation	24
Seldovia Village Tribe	24
Tyonek Native Corporation/ Tebughna Foundation	24

### TRIBAL SCHOLARSHIP OPPORTUNITIES

	24
--	----

### ALASKA NATIVE & NATIVE AMERICAN SCHOLARSHIP OPPORTUNITIES

	26
--	----

### MINORITY SCHOLARSHIP OPPORTUNITIES

	28
--	----

### GENERAL SCHOLARSHIP OPPORTUNITIES

	30
--	----

### HIGH SCHOOL PROGRAMS & SCHOLARSHIP OPPORTUNITIES

	32
--	----

### GRADUATE SCHOLARSHIP & FELLOWSHIP OPPORTUNITIES

Alaska Native & Native American Programs	34
Minority Programs	35
Open To All Graduates	36
Legal Programs	37
Medical, Dental & Public Health Programs	38

### CAREER TECHNICAL EDUCATION & VOCATIONAL PATHWAYS

TCF CAREER TECHNICAL EDUCATION SCHOLARSHIP	40
Construction Career Path Resources	40
Alaska Works Partnership	42
Alaska Vocational Technical Center	44
Northern Industrial Training	46

### BUILDING EXPERIENCE WITH INTERNSHIPS

Education & Employment Resources	51
----------------------------------	----

### DIVERSE PATHWAYS

WICHE Exchange Programs	53
WWAMI Medical Education Program	53
Tribal Colleges & Universities	54

# Follow TCF on Social Media



[www.facebook.com/thecirifoundation](http://www.facebook.com/thecirifoundation)



[www.linkedin.com/company/the-ciri-foundation](http://www.linkedin.com/company/the-ciri-foundation)



<https://thecirifoundation.org/share-your-story>



<https://thecirifoundation.org/recent-posts>



THE CIRI FOUNDATION



## Graduates, We Are Proud Of You!

Your dedication and hard work have led to this momentous occasion. It's time to share your success and take the next step toward your dreams.

### *Why Share Your Story?*

- **Spotlight Your Achievements:** Let the world see what you've accomplished.
- **Connect with Opportunities:** Access job openings and career paths crafted for your unique skills and ambitions.
- **Build Your Network:** Join a community here to support you as you navigate the professional landscape.

### *How to Share?*

Simply send us your graduation announcements and photos. Your journey is our inspiration, and we're excited to feature your story in our networks with TCF, affiliated tribes, and regional associations.

Don't miss the chance to highlight your hard-earned achievement and discover where it can take you next.

**SHARE YOUR STORY WITH TCF**



# FUND YOUR FUTURE

Strategies for Educational and Career Advancement

A publication of The CIRI Foundation.

Digital edition available at [www.thecirifoundation.org](http://www.thecirifoundation.org)